

Titan Late Start Goals

run on 03/21/2018



surveys

Custom Survey

1 survey(s) 20 response(s)

Report Filters**School:**
N/A**Grade(s) Taught:**
N/A**Tag:**
N/A

Titan Late Start Goals

Demographics

Number of Responses | Percentages of Total Responses

1. Grade(s) Taught

English 3 17%

Music 2 11%

Science 2 11%

Religion 3 17%

Math 2 11%

Art 1 6%

Social Studies 3 17%

Health/Physical Education 2 11%

Foreign Language

1 6%

18 respondents

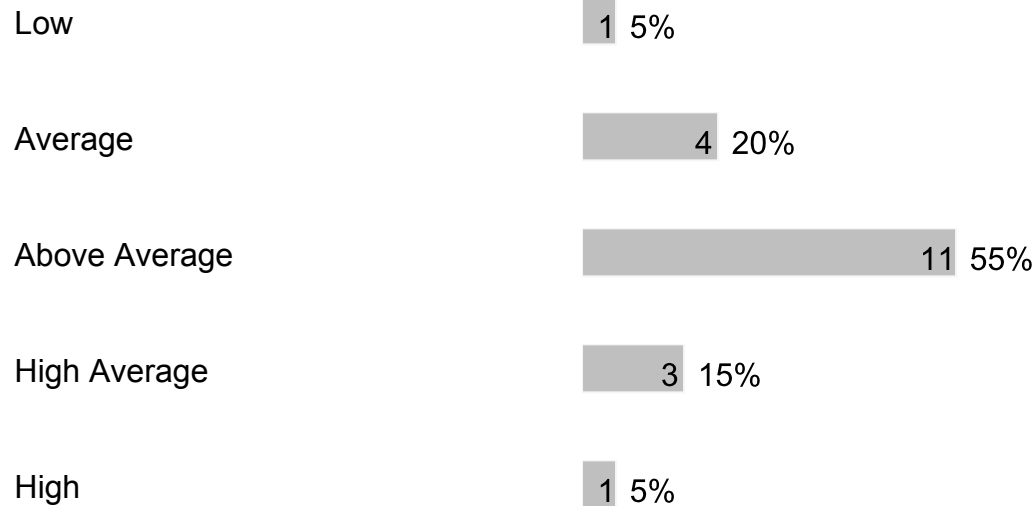
C. Items

1. On a scale of 1 to 7, value the need of academic intervention for both HI-FLYERS and LO-FLYERS. [1 is smallest value, 7 is highest value]



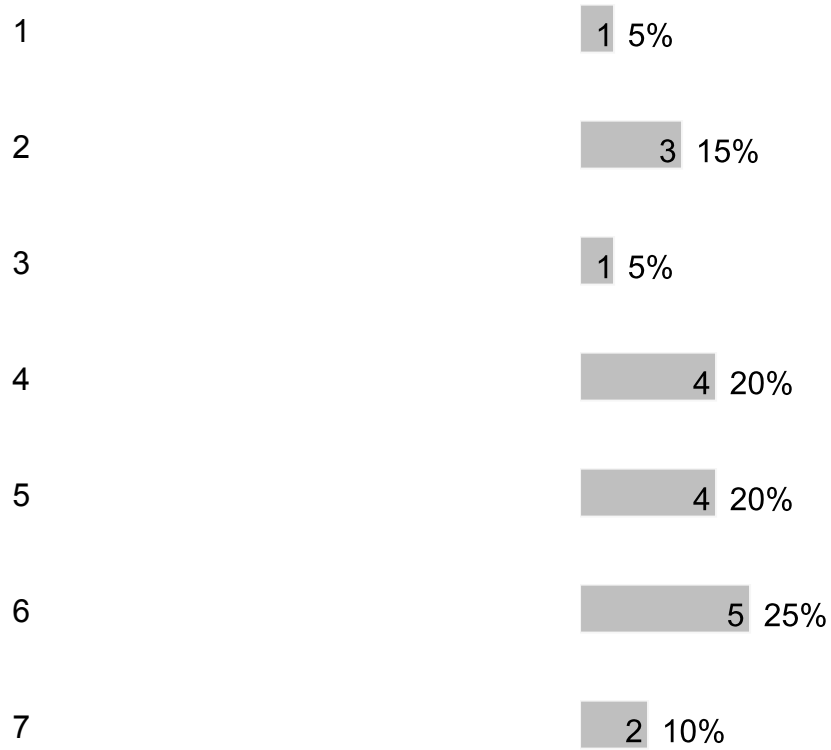
20 respondents

2. What is the academic competency of our Student Body across all content areas?



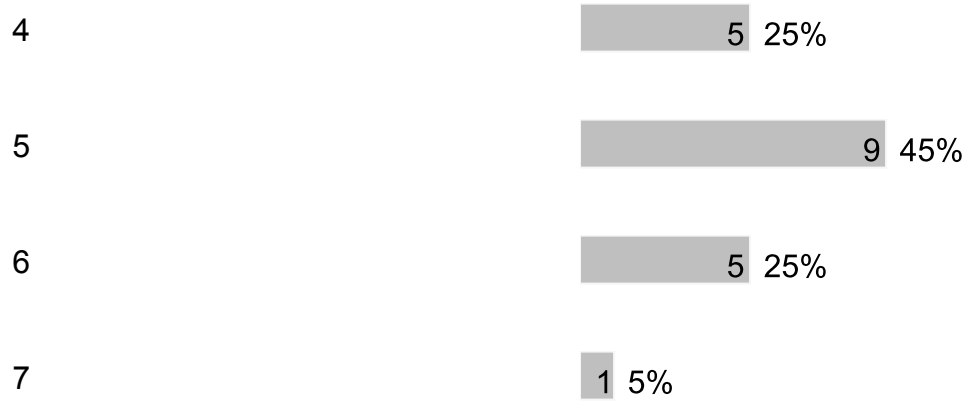
20 respondents

3. On a scale of 1 to 7, value the efforts of HI-FLYER academic intervention at Trinity. [1 is smallest value, 7 is highest value]



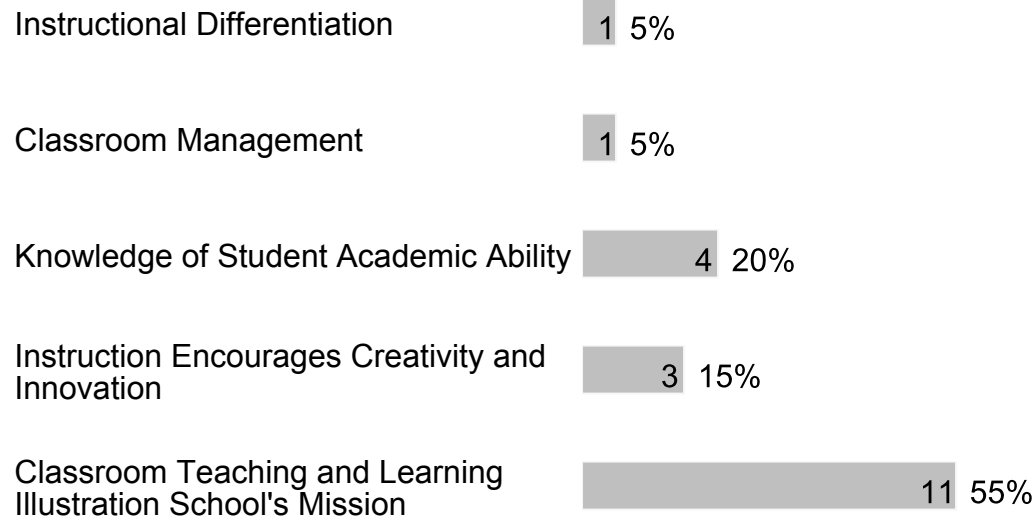
20 respondents

4. On a scale of 1 to 7, value the efforts of LO-FLYER academic intervention at Trinity. [1 is smallest value, 7 is highest value]



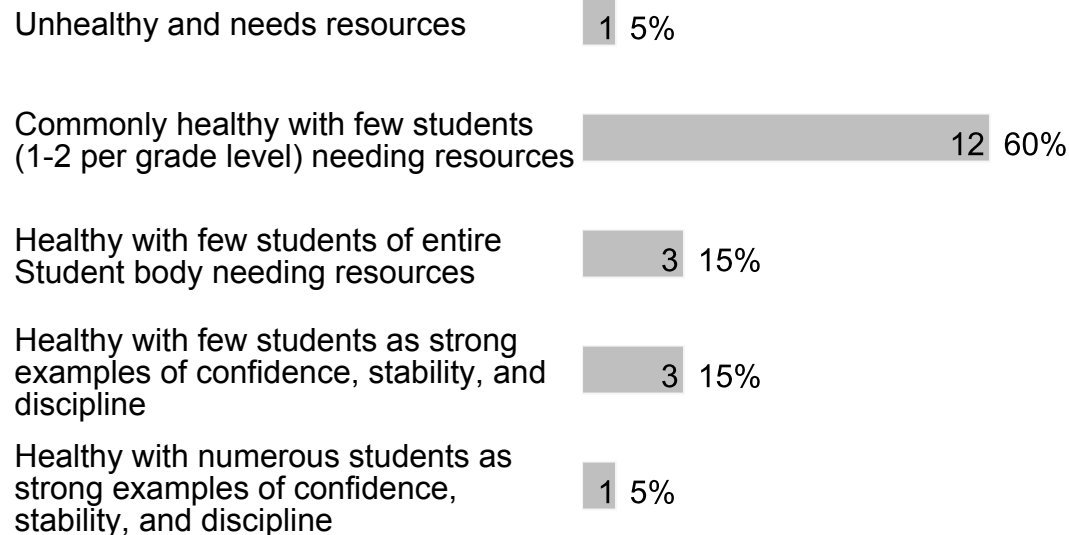
20 respondents

5. As a faculty team, what is our greatest strength in the classroom?



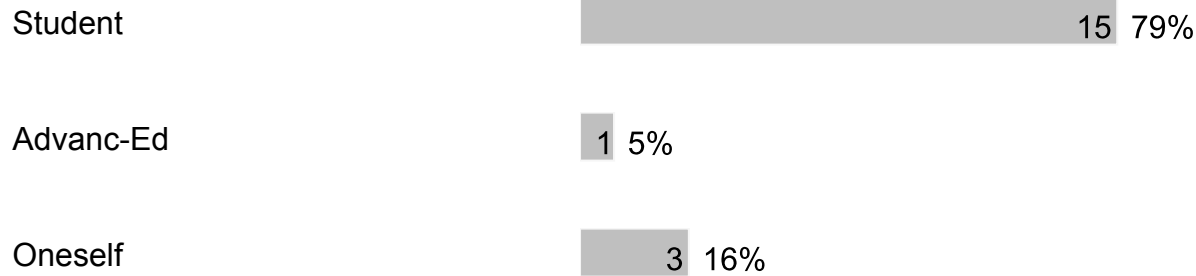
20 respondents

6. What is the emotional and mental health of our Student Body?



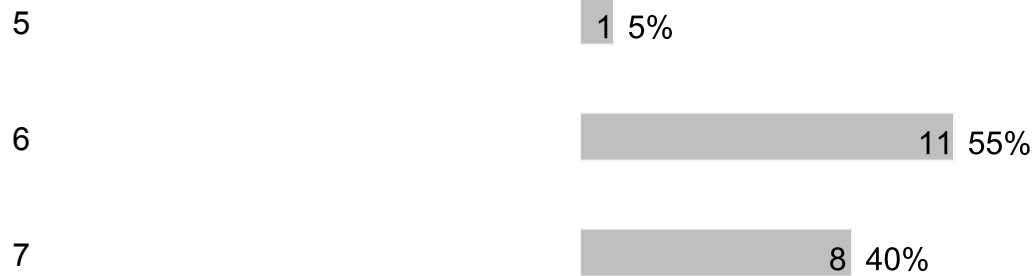
20 respondents

7. Which of the following perspectives motivates you the most in improving your teaching.



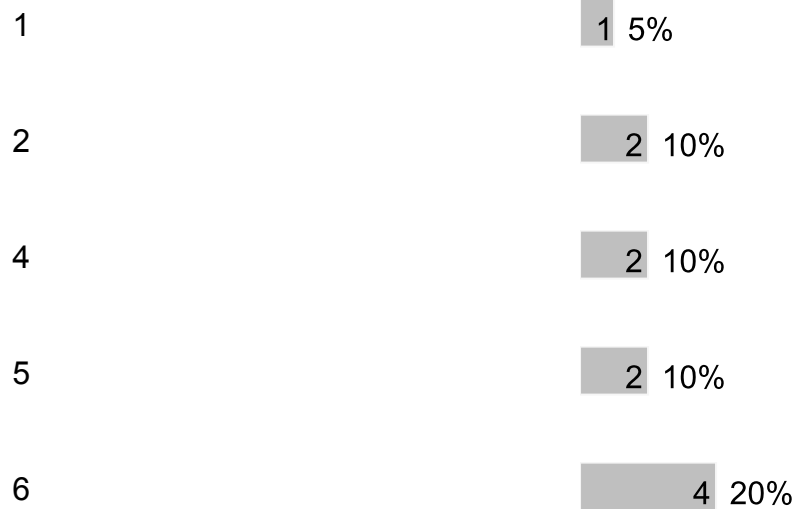
19 respondents

8. On a scale of 1 to 7, value your dedication to an accreditation process.



20 respondents

9. On a scale of 1 to 7, value your docility to a recommendation of the accreditation process.



7



20 respondents

10. Which Late Start Wednesday do you prefer?

1/3 & 2/4 Schedule



1-4 Schedule



20 respondents