

# ST. BENEDICT CATHOLIC CHURCH 2012-2013 FINANCIAL SUMMARY

## PARISH COMMENTS FROM YOUR FINANCE COUNCIL

For the fiscal year ending June 30, 2013, the Parish operated at a net loss of \$34,142.40 rather than "breaking even" as budgeted. The most significant factors driving our financial performance were:

- Sunday and holyday offerings were below budget by slightly more than \$40,000 or about 8.5%.
- Rental income associated with Scholastica House was \$13,000 below budget
- Repairs to our buildings were more than \$17,000 higher than budgeted. Of that, we spent over \$10,000 to repair the broken water line into the Parish Center
- The subsidy provided to our School was about \$19,000 less than budgeted

Looking forward to the 2013-2014 fiscal year, our approved budget calls for a net surplus of \$34,225. Parishioners should understand that the approved budget for 2013-2014 assumes about \$6,000 less in Sunday offering than the actuals for the 2012-2013 fiscal year. The most significant factors driving the projected improvement over last fiscal year are:

- Reduction in employee costs and benefits related to lower Parish staffing levels
- Elimination of School subsidy for this fiscal year. It should be clearly understood that the Parish will be working to restore the subsidy to previous historical levels
- Scholastica House has been leased
- Reduction in the Parish's planned charitable giving to others for this fiscal year. It should be clearly understood that the Parish will be working to restore our charitable giving to previous historical levels

The Finance Council looks forward to participating in and supporting discussions in the 2013-2014 fiscal year related to the restoration of the School subsidy and the level of the Parish's charitable giving.

## SCHOOL COMMENTS FROM YOUR FINANCE COUNCIL

For the fiscal year ending June 30, 2013, our School operated at a net loss of \$11,347.75 rather than a budgeted surplus of \$4,768. The most significant factors driving the School's financial performance were:

- Tuition was over \$81,000 lower than budgeted. This was due to incorrect assumptions regarding the number of students and the average tuition
- Non-employee related expenses were reduced by about \$30,000
- Employee salaries and benefits were some \$23,000 lower than budgeted
- \$20,000 more in prior year carryover funding was used than planned
- The subsidy received from the parish was \$19,000 lower than budgeted
- Fundraising was almost \$10,000 higher than budgeted

The School's major fundraising events generates over \$114,000 to be used in the 2013-2014 fiscal year and over \$38,000 for security related enhancements.

*There are donations that are unquantifiable yet precious to St. Benedict Parish & School: the many generous contributions of time, talent & treasure by our volunteer parishioners.*

*They include:*

*Giving Tree gifts*

*Food for Thanksgiving Baskets*

*Boxes of Joy (Peaceful Crafters*

*Food for Funeral Receptions*

*SVdP "Stuff the Truck"*

*Jubilee House Dinner*

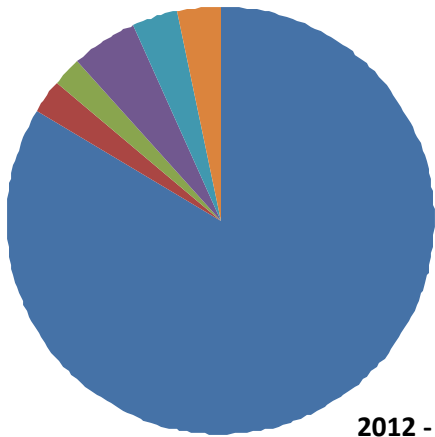
*Catholic Community Services Collection (directly submitted)*

*Archdiocese for Military Services Collection*

*Esperanza Project efforts*

*School parents who share their time and talent with The Wurst Festival, the Auction, Musical as well as help in the classrooms.*

*For these we are truly thankful.*



**PARISH REVENUE FY 2012/2013:  
\$536,185.08**

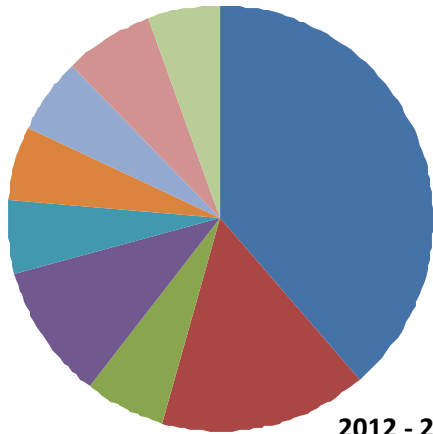
- Collections - 84%
- Fees - 2%
- Fundraising - 2%
- Gifts/Donations - 5%
- Business - 3%
- Other - 4%

<b>SPECIAL COLLECTIONS</b>	<b>12,970.52</b>
World Mission	
Sunday	2,133.50
CRS Collection	1,464.00
Operation Rice Bowl	3,881.62
Catholic Community Services	669.00
Black & Indian Missions	1,085.00
Retired Priest Pension	1,709.00
Peter's Pence	1,534.50
Build Hope	1,517.50
Friends of the Orphans (Holy Thursday)	1,109.90

<b>INCOME</b>	<b>2012 - 2013 ACTUALS</b>	<b>2012 - 2013 BUDGET</b>	<b>2013 - 2014 BUDGET</b>
Collections	449,048.63	502,000.00	436,000.00
Fees	12,897.58	5,100.00	16,265.00
Fundraising	12,319.49	12,000.00	-
Gifts/Donations	26,036.90	20,533.00	14,800.00
Business	17,408.71	27,800.00	26,300.00
Other	18,473.77	20,083.00	18,675.00
<b>Total Receipts</b>	<b>536,185.08</b>	<b>587,516.00</b>	<b>512,040.00</b>

<b>DIRECTED CASH DONATIONS</b>	<b>21,354.24</b>
St. Martin de Porres Sandwich	4,472.12
St. Vincent de Paul (envelopes)	5,142.12
Thanksgiving Esperanza (Tea Party)	960.00
Zambia Scholarships & Supplies (Giving Tree)	3,294.00
Juvenile Detention Ministry (Giving Tree)	5,820.00
Flowers	56.00
	1,610.00

**PARISH EXPENSES FY 2012/2013:  
\$570,327.48**



- Salaries - 39%
- Benefits - 16%
- Operating Supplies 6%
- Program Expenses - 10%
- Maintenance - 5%
- Insurance & Fees - 6%
- Other Business - 6%
- Utilities - 7%
- Assessments - 5%

<b>EXPENSES</b>	<b>2012 - 2013 ACTUALS</b>	<b>2012 - 2013 BUDGET</b>	<b>2013 - 2014 BUDGET</b>
Salaries	220,879.99	211,389.00	200,892.00
Benefits	90,101.67	89,254.00	83,103.00
Operating Supplies	34,704.10	28,792.00	34,583.00
Program Expenses	57,581.52	88,319.00	10,470.00
Maintenance	31,861.45	36,500.00	22,800.00
Insurance & Fees	32,559.48	32,069.00	35,697.00
Other Business	32,630.43	34,400.00	17,800.00
Utilities	38,388.02	35,150.00	38,220.00
Assessments	31,620.82	31,643.00	34,250.00
<b>Total Disbursements</b>	<b>570,327.48</b>	<b>587,516.00</b>	<b>477,815.00</b>
Variance	(34,142.40)	-	34,225.00

<b>ACA</b>	<b>87,163.15</b>
Archdiocese	70,003.00
Parish Rebate	17,160.15
	<b>121,487.91</b>

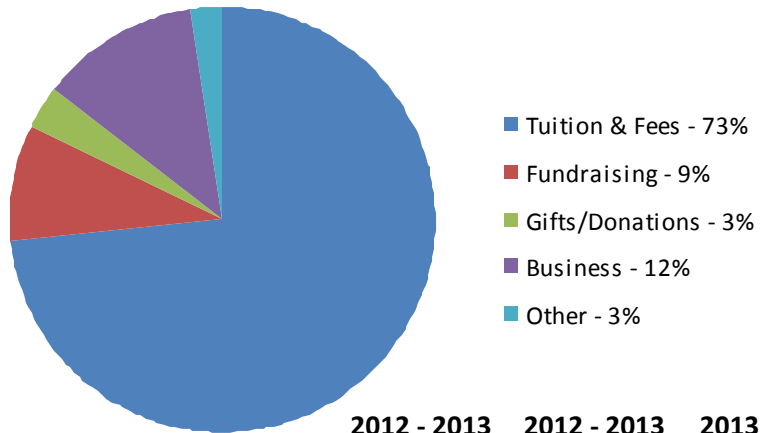
**PARISH CHARITABLE GIFTS**

GIFT RECIPIENT	AMOUNT
Cabrini Ministries	400.00
Catholic Charities - Archdiocese of Oklahoma City	2,000.00
Catholic Seaman's Club	620.19
Catholic Volunteer Network	46.83
Columbia Lutheran Ministries	469.64
Criminal Justice Ministry - North Seattle Deanery	1,918.00
Crozier Society	300.00
Emergency Feeding Program of Seattle / King County	374.64
Food Lifeline	749.28
Friends of Recovery Cafe	620.19
Fulcrum Foundation	750.00
Girls on the Run of Puget Sound	280.98
Jubilee Woman's Center	620.19
Multifaith Works	280.98
Northwest Harvest	749.28
Parishioners Helping Parishioners	3,870.00
Seattle Union Gospel Mission	620.19
Seattle University School of Theology & Ministry	468.30
St. Benedict School	936.60
St. Lawrence – Limulunga	1,000.00
St. Martin de Porres Men's Shelter	620.19
St. Mary's Food Bank	749.28
The Pediatric Brain Tumor Research Fund Guild	374.64
UW Newman Center	374.64
Wallingford Food Bank (aka Solid- Ground)	749.28
Wounded Warriors	400.00
WSU Newman Center	374.64
WWU Newman Center	374.64
<b>TOTAL</b>	<b>21,092.60</b>

**SCHOOL FUNDRAISING FY 2012/2013**

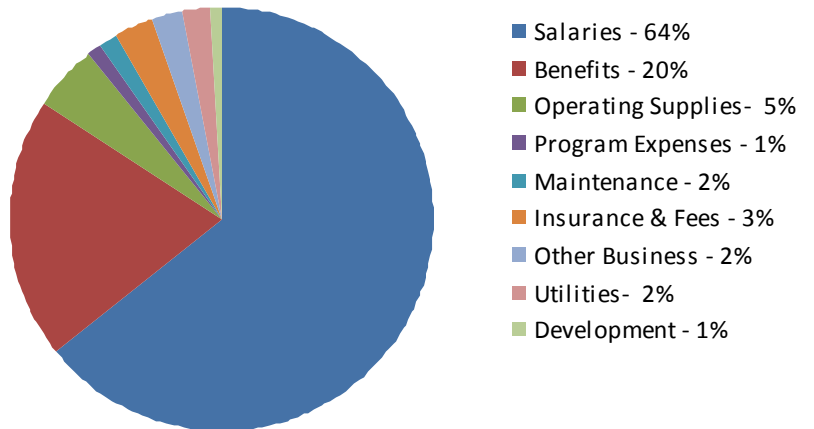
Wurst Festival - 32%	62,112.22
Auction - 45%	88,948.63
Development Office - 22%	42,220.97
Spaghetti Dinner -1%	1,789.65
<b>Total</b>	<b>195,071.47</b>

**SCHOOL REVENUE FY 2012/2013: \$1,539,719.58**



INCOME	2012 - 2013 ACTUALS	2012 - 2013 BUDGET	2013 - 2014 BUDGET
Tuition & Fees	1,128,297.15	1,237,979.00	1,277,712.00
Fundraising	138,370.00	327,000.00	127,612.00
Gifts/Donations	49,243.23	40,000.00	35,000.00
Business	185,852.50	181,000.00	180,425.00
Other	37,956.70	46,000.00	44,125.00
<b>Total Receipts</b>	<b>1,539,719.58</b>	<b>1,831,979.00</b>	<b>1,664,874.00</b>

**SCHOOL EXPENSES FY 2012/2013: \$1,551,067.33**



EXPENSES	2012 - 2013 ACTUALS	2012 - 2013 BUDGET	2013 - 2014 BUDGET
Salaries	995,518.43	1,013,956.00	1,035,850.50
Benefits	309,532.17	314,243.00	347,175.00
Operating Supplies	79,456.87	98,861.00	100,175.00
Program Expenses	14,519.09	6,100.00	13,000.00
Maintenance	24,817.68	31,000.00	31,500.00
Insurance & Fees	47,346.31	53,000.00	51,000.00
Other Business	31,163.08	253,069.00	30,240.00
Utilities	35,778.95	41,432.00	47,632.00
Development	12,934.75	15,550.00	11,850.00
<b>Total Disbursements</b>	<b>1,551,067.33</b>	<b>1,827,211.00</b>	<b>1,668,422.50</b>
Variance	(11,347.75)	4,768.00	(3,548.50)

# COMMENTS FROM COUNCILS AND COMMISSIONS

## **STEWARDSHIP COMMISSION**

The Stewardship Commission continued welcoming new parishioners through personalized welcome packets and quarterly welcome gathering after all Masses this past year. We encouraged “stewardship as a way of life” through inclusion of stewardship reflections in the bulletin, establishing the “little St. Benedict church” for children’s stewardship offerings, and coordinating witness speakers for the annual renewals time, talent and treasure. The Stewardship Commission hosted the annual Ministry Fair to educate parishioners on available service opportunities within our faith community. Our hope continues to be that parishioners will find service opportunities that utilize their strengths as they share their time and talents. Hosted fellowship dinners in January, provided parishioners the opportunity to meet and socialize with other parishioners. This event was a wonderful success, with almost 50 participants across all of the hosting homes. Several participants expressed gratitude for the chance to meet and get to know fellow parishioners from different Masses in a relaxed, small group setting.

## **WORSHIP AND SPIRITUAL LIFE (WSL) COMMISSION**

The Worship and Spiritual Life Commission aided in the planning for liturgies for holydays and further supported Father Mark and Pastoral Assistant for Music, Charlie Hiestand, with critiques and advice on Sunday Masses, holydays and the Christmas and Easter seasons. This last year the Commission continued their efforts to document expectations and guidelines for the various types of liturgical ministers that make the liturgies possible. This includes working on new guidelines for Extraordinary Ministers of Holy Communion that culminated in recent training sessions. The Mass time survey that parishioners recently responded to is part of our on-going efforts to make sure that the Mass schedule best serves our faith community.

## **HUMAN CONCERNS AND SOCIAL JUSTICE COMMISSION**

Through the efforts of our all our ministry volunteers and coordinating Human Concerns and Social Justice Commission members, we were able to help feed the hungry, clothe the poor and minister to those in need. Members of our Parish’s Esperanza Trek Team also helped to create housing in Tijuana, Mexico. Your generosity through our Giving Tree program provided over 450 gifts including over \$5,000 in tuition scholarship and school supplies to students in our St. Lawrence of Brindisi sister parish in Limulunga, Zambia. The Cinco de Mayo Dinner provided to the ladies of Jubilee House was a highlight of the year for those residents. Our bulletin articles helped to educate parishioners regarding social justice and human concerns issues. Thank you to all those people that participate as Cabrini Ministers, members of our Esperanza Team, members of our Friends of Limulunga Committee, members of our Peaceful Crafters, St. Martin de Porres Sandwich Makers and the Vincentians of our St. Vincent de Paul Conference. Your sharing of your time, talent and treasure help to make stewardship a way of life at St. Benedict Parish.

## **PASTORAL COUNCIL**

The Pastoral Council provides advice and recommendations to our pastor, Father Mark, as requested. The Pastoral Council also worked with the Finance Council in the winter and spring to ensure that the Parish and School budgets were developed and approved. The Council collected information about meeting Year-3 Goals of the Strategic Plan from all councils and commissions and hosted a Leadership Day where Year-4 Goals of the Strategic Plan were discussed and recommendations were made. A sense of "community" was also built throughout this one-day workshop. The Council also submitted a 2011-2012 Parish Annual Report following the Leadership Day. The Parish Tea was held in May 2013, organized under the umbrella of the Pastoral Council. The Council organized the celebration of Fr. Mark's 5th year anniversary of ordination in June, planned and organized the Parish Picnic and went forward with the plans for a new photo directory.