

# saint colman of cloyne



C A T H O L I C C H U R C H

219 South North Street  
Washington Court House, Ohio 43160-2250  
740-335-5000 • Fax ~ 740-335-5066  
office@stcolmanwch.org • www.stcolmanwch.org

### PARISH STAFF

<i>Pastor</i>	Father William Hahn
<i>Parochial Vicars</i>	Father Michael Hartge Father Sean Dooley
<i>Clergy in an Emergency</i>	740-774-1407
<i>Parish Office Manager</i>	Tina Garland
<i>Coordinator of Religious Education</i>	Stephanie Robinson Phone 740-335-5005
<i>Parish Maintenance</i>	David Kearney Paul Ondrus
<i>Liturgical Music</i>	Craig Jaynes
<i>Finance Committee</i>	Bridget Sollars, Chair Patricia Griffiths Michael O'Neill James Ward Gwynne Gibson
<i>Chillicothe Deanery Representatives</i>	James McDonald
<i>Prayer Chain Ministry</i>	Rita Wheaton Phone 740-335-5409
<i>St. Vincent DePaul Society</i>	740-606-7801



### BAPTISM

Baptisms are celebrated for active members of Saint Colman of Cloyne Parish. The Sacrament of Baptism is celebrated on the second Sunday of each month, excluding Lent. Preparation for parents and godparents is scheduled on the first Sunday of each month at Noon. Please call the Parish Office to register for the preparation class.

### MATRIMONY

Matrimony is celebrated for active members of Saint Colman of Cloyne Parish. Preparation includes FOCCUS, meetings with the priest and participation in the Diocesan Pre-Cana Program. Please contact the Pastor at least six months in advance to secure a date.

### SICK CALLS

Any time day or night in an emergency. Please notify the Parish Office if someone is hospitalized, or confined to home or a nursing facility because of illness, age or infirmity.

### RITE OF CHRISTIAN INITIATION OF ADULTS

Interested in the Catholic faith? The RCIA is held from Fall to Pentecost. Contact the Parish Office for more information.

### PARISH MEMBERSHIP

Welcome new members! Please register through the Parish Office.

#### MASS SCHEDULE

Saturday Vigil  
5:00 p.m.  
Sunday Morning  
8:30 a.m.  
Daily Mass  
8:30 a.m. Monday & Thursday  
5:30 p.m. Tuesday

#### CONFESSION

Tuesday  
5:00 p.m. - 5:15 p.m.  
Saturday  
4:00 - 4:30 p.m.

#### PARISH OFFICE HOURS

9:00 a.m. - 1:00 p.m.  
Monday - Friday

Member of the four parish consortium including: St. Peter, Chillicothe; St. Mary, Queen of the Missions, Waverly; St. Sylvester, Zaleski

## Daily Scripture Readings

### Monday, February 8

1 Kings 8:1-7, 9-13  
Mark 6:53-56

### Tuesday, February 9

1 Kings 8:22-23, 27-30  
Mark 7:1-13

### Wednesday, February 10

Joel 2:12-18  
2 Corinthians  
Matthew 6:1-6, 16-18

### Thursday, February 11

Deuteronomy 30:15-20  
Luke 9:22-25

### Friday, February 12

Isaiah 58:1-9a  
Matthew 9:14-15

### Saturday, February 13

Isaiah 58:9b-14  
Luke 5:27-32

### Sunday, February 14

Deuteronomy 26:4-10  
Romans 10:8-13  
Luke 4:1-13

## Ministers List

### Saturday, February 13

Celebrant: Fr. Hahn  
Lector: Mary Smith  
EM: Jim Garland  
Melissa Garland  
Beth Ann Snyder  
Servers: Jakob Snyder  
Sarah Snyder

### Sunday, February 14

Celebrant: Fr. Hahn  
Lector: John Elrich  
EM: Patty Brown  
Paul Ondrus  
Mike Hall  
Charlie Woodard  
Servers: Nicholas Elrich  
Olivia Flerchinger

## Counter Volunteers

2/8/16

Carolyn Mallow &  
Patty Griffiths

**T**his Week's Mass Schedule (Feb. 6 - Feb. 14, 2016)  
Saturday, February 6, 2016 + Vigil of the Fifth Sunday in Ordinary Time [Hartge]  
Mass of Anointing of the Sick  
4:00pm Confession

5:00pm Special Intention by the Torgerson Family

**Sunday, February 7, 2016 + Fifth Sunday in Ordinary Time [Hartge]**

**Mass of Anointing of the Sick**

8:30am +Garth Fosnaugh by Mike & Bonnie Hall

**Monday, February 8, 2016 + Weekday [Hartge]**

8:30am +Ken & Mary Emma Johnson by John & Lana Elrich

**Tuesday, February 9, 2016 + Weekday [Hahn]**

5:00pm Confession

5:30pm +Agnes Bistner by Mike & Bonnie Hall

**Wednesday, February 10, 2016 + Ash Wednesday [Hartge]**

8:30am +Mary McCoppin by Bob & Margie Engle

7:00pm +Gordon Davis by Mike & Bonnie Hall

**Thursday, February 11, 2016 + Weekday [Hahn]**

8:30am +The Joseph & Eleanora Nordmann Family

**Friday, February 12, 2016**

NO MASS

**Saturday, February 13, 2016 + Vigil of the First Sunday of Lent [Hahn]**

4:00pm Confession

5:00pm +Doris Lutz by Dave & Charlotte Kearney

**Sunday, February 14, 2016 + First Sunday of Lent [Hahn]**

**Parish Council Selection**

8:30am +Charles Roberts Griffiths by Allen & Patty Griffiths

**H**appy Birthday This Week  
To:

February 8: Zach Sollars

February 10: Allen Griffiths

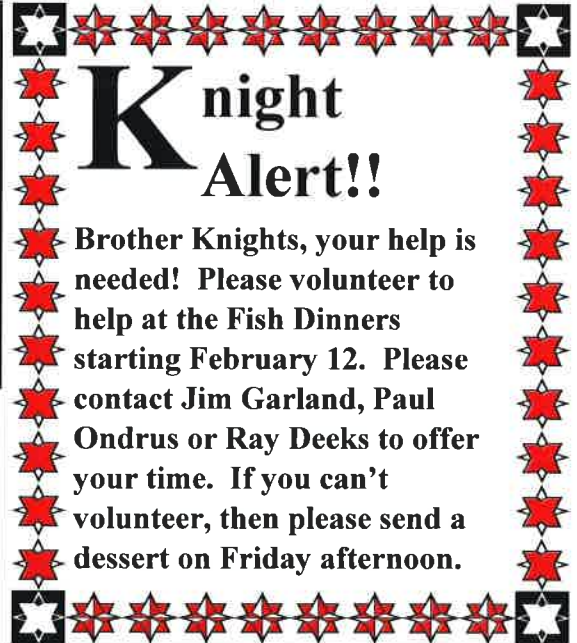
February 11: Jennifer Leubbe

February 12: Rhona Geesling, Nancy  
Stuhldreher

February 14: Jim McDonald

**W**hat is your Spiritual  
Charism?

To follow up with the Spiritual Gifts Workshop in October 2015, we will look at each of the Charisms presented. The next Charism is HOSPITALITY. The Charism of Hospitality empowers a Christian to be a generous channel of God's love by warmly welcoming and caring for those in need of food, shelter, and friendship. Examples of using this charism would be invite more people into your house, Red Cross volunteer, welcome people in church, help to refugees, bereavement committee.



## Holy Day Mass Schedule

Holy Thursday, 7:00pm

Good Friday, 3:00pm

Easter Vigil, 8:30pm

Easter Sunday, 8:30am

# *Saint Colman of Cloyne Catholic Church*

## **From the Pastor's Desk:**

It's time for Lent already. Make this a great Lent by following these four steps:

- 1) Start off with Ash Wednesday, this Wednesday. We will be having a Mass here at 8:30 a.m. and 7:00 p.m.
- 2) Attend the Catholic men's or women's conference in Columbus. These are very high-quality conferences that are now held annually in our diocese. Each year attendance at each of these exceeds 2000. Both conferences have excellent speakers and beautiful liturgies as well as the opportunity for confession. The women's conference is Saturday February 20. The men's conference is the following Saturday (February 27). Register for the events at [columbuscatholicwomen.com](http://columbuscatholicwomen.com) or [columbuscatholicmen.com](http://columbuscatholicmen.com).
- 3) Attend Eucharistic Adoration during Lent. We have Adoration every Tuesday from 6-8:15p. Make a commitment to visit with the Lord more this Lent.
- 4) Follow the disciplines of the Church:  
A reminder on the disciplines of these forty days:
  - A. Lent is the penitential season of the Church's year. It runs from Ash Wednesday to the Mass of the Lord's Supper on Holy Thursday. There are six Sundays in Lent. The sixth is named Passion (or Palm) Sunday and starts Holy Week.
  - B. To FAST means to eat one full meal and two lesser meals. Ash Wednesday and Good Friday are days of FAST, and are kept by those aged 18 to 59. One is encouraged to fast on other days, too, throughout the year.
  - C. To ABSTAIN means to refrain from eating meat, and soups or gravies made from meat. Ash Wednesday and Good Friday are days of abstinence, as are all Fridays in Lent. Catholics aged 14 and older are bound to abstain from meat.
  - D. We may observe fast and abstinence on other days, of course. Other practices, such as daily Mass, Bible reading and study, extra prayer, the Way of the Cross, works of mercy, almsgiving, etc., are highly encouraged and not limited to Lent.

Let's go deeper with the Lord this Lent!

In Christ,  
Fr. Hahn



# Parish Activities



## St. Colman FISH FRY!!

The Knights of Columbus will begin serving fish dinners on February 12 and continue for the six Fridays of Lent from 4:30-7:00pm. Bring family and friends for great food and delicious desserts.



## St. Valentine's Day Dinner and Dance

Saturday February 13th  
6:30pm - 11pm  
Prime Rib, Sides, Dessert  
\$25 person/ \$50 couple



**Country Concerts Series: From HEAD to HEART and BACK Again.**  
Sunday, February 7, 2016 at 3:00pm  
Tickets may be purchased at the door.  
Cost is \$10/person.

### What's Happening This Week

- Saturday, February 6**  
7:00pm A.A. Meeting, CH
- Sunday, February 7**  
9:30am Coffee & Donuts, PH  
10:00am PSR  
3:00pm Country Concert Series, Church
- Monday, February 8**  
7:00pm Adult Study Group, CR
- Tuesday, February 9**  
6:30 pm RCIA, CR  
6-8:15pm Eucharistic Adoration  
8:15pm Benediction
- Wednesday, February 10**  
11:00am Rosary, Church  
7:00pm A.A. Meeting, CH
- Friday, February 12**  
4:30—7:00pm Knights Fish Fry, PH  
7:00pm Stations of the Cross
- Saturday, February 13**  
6:30 - 11:00pm Valentine's Dinner & Dance, PH  
7:00pm A.A. Meeting, CH

**Don't give up Chocolate this Lent!** Dynamic Catholic invites you to join Matthew Kelly to a free email program based upon Rediscover Jesus, the book passed out at Christmas. Sign up at [DynamicCatholic.com/Lent](http://DynamicCatholic.com/Lent). Didn't get one? Visit the Dynamic Catholic website and find out how you can get one.

SPECIAL COLLECTIONS FOR JANUARY 2016	
BOSCO Bash	\$ 100.00
Candle Money	\$ 70.76
Coffee & Donuts	\$ 109.00
Food Pantry	\$ 50.00
Initial Offering	\$ 325.00
March for Life	\$ 1843.00
Propaganda of Faith	\$ 559.00
Solemnity of Mary	\$ 2364.00
St. Vincent de Paul	\$ 1867.50
<b>Other Income</b>	
Hall Rental	\$ 275.00

St. Vincent de Paul Report for December and January		
	December	January
Amount Paid:	\$1,710.23	\$1,794.45
Calls Received:		
Food	31	20
Gasoline	1	10
Prescriptions	0	2
Shelter	10	18
Utilities	10	23
Other	9	9
<b>Total</b>	<b>61</b>	<b>82</b>

### Sacrificial Giving 1/31/16

	Weekly Offertory	YTD Offertory
<b>Budgeted</b>	<b>\$5218.53</b>	<b>\$161,873.34</b>
<b>Actual Offertory</b>	<b>\$5081.50</b>	<b>\$150,448.42</b>
<b>Difference</b>	<b>\$(137.03)</b>	<b>\$(11,424.92)</b>

*Thank you for your continued support!*

## *25 Things to do in Adoration*

1. Slowly read scripture until something hits you. Then listen.
2. Say a rosary.
3. Let God look at you.
4. Tell Him something that made you happy. Then listen.
5. Tell Him what you are afraid of. Then listen.
6. Tell Him what angers you. Then listen.
7. Speak about your loved ones.
8. Pray for an enemy.
9. Talk with Him about work.
10. Sing a song for Him in your heart.
11. Promise to trust Him.
12. Imagine Mary sitting next to you and praying with you.
13. Renew your loyalty to His church.
14. Lean on Him. Tell Him you love Him.
15. Thank Him for the Sacraments.
16. Tell Him your failures. Ask for help. Then listen.
17. Slowly recite the Beatitudes.
18. Say one Our Father slowly.
19. Say one Hail Mary slowly.
20. Say the creed slowly.
21. Pray for vocations.
22. Ask Him to show you the next step.
23. Count your gifts. Then thank Him.
24. Pray for the world.
25. Enjoy just being in His Presence!



# February 2016



Sunday	Monday	Tuesday	Wednesday	Thursday	Friday	Saturday
<b>MARY,</b> <b>QUEEN OF</b> <b>THE CLERGY,</b> <b>PRAY FOR</b> <b>THEM !!!</b>	<b>FR.</b> <b>JEFFREY</b> <b>TIGYER</b>	<b>FR.</b> <b>FREDERICK</b> <b>SCHMIDT</b> <b>DEC.</b>	<b>MSGR.</b> <b>DAVID</b> <b>FUNK</b>	<b>FR.</b> <b>EUGENE F.</b> <b>SWEENEY OMI</b> <b>DEC.</b>	<b>FR.</b> <b>IGNATIUS</b> <b>HARRINGTON</b>	<b>FR.</b> <b>MARK</b> <b>HANNOND</b>
<b>FR.</b> <b>FRANCIS J.</b> <b>CAMPBELL</b> <b>DEC.</b>	<b>MSGR.</b> <b>PATRICK</b> <b>GAUGHAN</b>	<b>FR.</b> <b>RICHARD</b> <b>ENGLE</b>	<b>FR.</b> <b>DAVID</b> <b>PURDY</b> <b>SDB</b>	<b>FR.</b> <b>CHARLES</b> <b>NOLL</b> <b>OFM,CAP</b>	<b>FR.</b> <b>HILARY</b> <b>IKE</b>	<b>FR.</b> <b>BERNARD</b> <b>McCLORY</b> <b>DEC.</b>
<b>MSGR.</b> <b>WILLIAM</b> <b>DUNN</b>	<b>MSGR.</b> <b>STEPHEN</b> <b>HAWKINS</b> <b>DEC.</b>	<b>BISHOP</b> <b>CLARENCE E.</b> <b>ELWELL</b> <b>DEC.</b>	<b>BISHOP</b> <b>FULTON J.</b> <b>SHEEN</b> <b>DEC.</b>	<b>FR.</b> <b>J.LAWRENCE</b> <b>REICHERT</b>	<b>FR.</b> <b>VINCENT</b> <b>McKIERMAN</b> <b>CSP</b>	<b>FR.</b> <b>CHARLES</b> <b>MULVEY</b> <b>DEC.</b>
<b>MSGR.</b> <b>GEORGE</b> <b>SCHLEGEL</b>	<b>MSGR.</b> <b>FRANK</b> <b>MEAGHER</b>	<b>FR.</b> <b>MARK</b> <b>GHILONI</b>	<b>MSGR.</b> <b>ROLAND T.</b> <b>WINEL</b> <b>DEC.</b>	<b>FR.</b> <b>DONALD</b> <b>MARON</b>	<b>BISHOP</b> <b>BLAZE</b> <b>CUPICH</b>	<b>FR.</b> <b>JEFF</b> <b>RIMELSPACH</b>
<b>MSGR.</b> <b>ROBERT E.</b> <b>METZGER</b>	<b>FR.</b> <b>VINCENT</b> <b>NGUYEN</b>	<b>PRAY FOR THE PRIEST OF THE DAY</b> <b>AND FOR AN INCREASE IN</b> <b>RELIGIOUS VOCATIONS !!!</b>				