



ST. ANTHONY of PADUA CATHOLIC SCHOOL

2016-2017
School
Profile

7901 BAY BRANCH DRIVE, THE WOODLANDS, Texas 77382
PHONE: 281-296-0300 ♦ FAX: 281-296-7236 ♦ WEBSITE: WWW.STAOPCS.ORG

THE SCHOOL...

St. Anthony of Padua Catholic School was established in 2001 as a ministry of St. Anthony of Padua Parish. It is part of The Archdiocese of Galveston-Houston Catholic Schools system. SAOPCS is one of only two Catholic schools in Montgomery County and the only Catholic school in The Woodlands. The school serves students from PreK3 through 8th grade with two classrooms per grade level. SAOPCS was named a United States Department of Education National Blue Ribbon School of Excellence in 2012.

MISSION STATEMENT...

The mission of St. Anthony of Padua Catholic School is to:

Instill Roman Catholic identity, reverence for the sacraments and a lifelong commitment to joyful discipleship;

Enrich students by fostering academic excellence and providing opportunities that nurture and challenge all to reach their full potential;

Develop, with parents, the moral compass that guides students to serve with Jesus Christ as their model.

VISION STATEMENT...

The vision of St. Anthony of Padua Catholic School is to guide the mind, body, and spirit of the next generation of Catholic leaders to live the Gospel of Jesus Christ as beacons of light to the world.

ACCREDITATION...

St. Anthony of Padua is fully accredited by the Texas Catholic Conference Education Department (TCCED) and AdvancED®, formerly Southern Association of Colleges and Schools (SACS).

SCHOOL FACTS...

◆ ENROLLMENT

491 Students 314 Families
80% Parishioners

◆ ACADEMIC CALENDAR

180 Days of Instruction
2 Semesters
4 Nine Week Quarters

◆ SCHOOL DAY

8:00-11:00 or 12:15-3:15 PreK
8:00-3:15 K-3rd
8:00-3:30 4th-8th

◆ CLASS SIZES

PreK3 - 18 PreK4 - 20 K-5th - 24
6th-8th - 25

◆ RELIGION

99% Catholic 1% Other

◆ ETHNICITY

65% White 12% Other
23% Hispanic/Latino

◆ GENDER

48% Male 52% Female

◆ ZIP CODES

20 Zip Codes 87% within
The Woodlands

◆ BEFORE & AFTER SCHOOL PROGRAM

Open 6:30-6:30 on most days
when school is in session

◆ OFFICE HOURS

7:40-3:45 during school year

◆ FACULTY & STAFF

58 Members
89% Retention Rate
Combined Years of Experience
611 Professionals
213 Paraprofessionals
26% Hold Advanced Degrees
47% Religion teachers have
Catechist Certification/100%
of professional staff working
on Catechist Certification

◆ ATHLETIC PROGRAM

Cross Country, Football, Soccer,
Volleyball, Basketball, Baseball,
Softball, Track & Field
GHCAA - Greater Houston
Catholic Athletic Association

◆ MASCOT

Spirit the Dolphin

◆ SCHOOL COLORS

Blue & Green

◆ CLUBS & ORGANIZATIONS

Junior Master Gardeners, Spirit
Club, Student Council, National
Junior Honor Society, Quiz Bowl,
Thespian Society

◆ SCHOOL UNIFORMS

Required at all grade levels
Vendor - Parker Uniforms

◆ CAFETERIA SERVICE

Vendor - Geomar©

Fr. Tom Rafferty
Pastor

Renee' B. Nunez
Principal

Susan Leddy
Assistant Principal PreK-5th

Kendall Shamas
Assistant Principal Middle
School & Auxiliary Programs

Olga Wunch
Learning Advisor

Janay O'Connor
Counselor

Leslie Pavlock
Nurse

Dale Quickel
Athletic Coordinator

Nestor Cayanan
Religion Coordinator

Ashley Knopp
Assistant Religion
Coordinator

Cathy Russell
Admissions & Office
Manager

Colette Carson
Business Manager

Amy Leslie
Instructional Technologist &
Information Systems
Coordinator

Leigh Moorman
Advancement Coordinator
for Events & Stewardship

Katie Tressel
Advancement Coordinator
for Community Engagement

ST. ANTHONY OF PADUA CATHOLIC SCHOOL NURTURING SOULS. ENRICHING MINDS.

ACADEMICS...

Instruction adheres to The Archdiocese of Galveston-Houston curriculum incorporating Texas Essential Knowledge & Skills (TEKS) with Christian values and Catholic doctrine. Students study religion, language arts, mathematics, science, social studies, technology, library skills, physical education, health, fine arts and foreign language. Our learner-centered curriculum maintains high academic standards and nurtures the development of a life-long love of learning. Students are actively engaged through the use of differentiated instruction and emerging technologies that promote collaboration and higher level thinking skills. The school's Strategic Plan capitalizes on the National Catholic Education Association's (NCEA) initiative, STREAM, recognizing and increasing the integration of religion into science, technology, engineering, arts and math. Guidance addresses the academic, personal, and social development of students through development of character traits, social skills and conflict resolution skills. The P.A.C.E. program supports classroom teachers as they work to meet the needs of students with learning differences.

GRADING SCALES

Major Subjects...

Outstanding	Above Average	Average	Below Average	Failure
A+ 99-100	B+ 91-92	C+ 84-85	D+ 76-77	F Below 70
A 95-98	B 88-90	C 80-83	D 72-75	
A- 93-94	B- 86-87	C- 78-79	D- 70-71	

Other Subjects & Conduct...

E -Excellent (90-100)	N -Needs Improvement (70-79)
S -Satisfactory (80-89)	U -Unsatisfactory (60-69)

MIDDLE SCHOOL GRADUATION REQUIREMENTS

Religion	3 Units
Literature	3 Units
English	3 Units
Math	3 Units
Science	3 Units
Social Studies	3 Units
PE	1.5 Units
Electives	4.5 Units
Total	24 Units

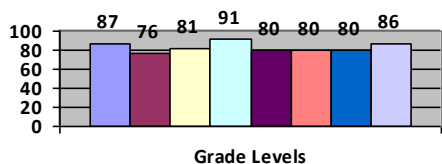
DISCIPLINE - A CALL TO RESPONSIBILITY

We emphasize discipline through discipleship, helping students recognize the voice of God, understand the message, and act upon it freely. Discipleship asks students to make life-giving choices, show respect and dignity for all, build community and accept responsibility for their words and actions. Misbehavior is considered opportunity for growth. Moral dialogue between adults and students focuses on reflection, response, restitution and reconciliation. As Jesus offers redemption, so do we through renewed trust and forgiveness.

IOWA® Results (2015-2016)

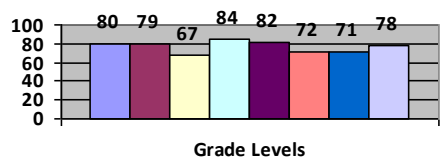
Students in The Archdiocese of Galveston/Houston take the IOWA® test in the spring. Results demonstrate the Catholic tradition of academic excellence exists in our school.

ENGLISH LANGUAGE ARTS



1st 2nd 3rd 4th 5th 6th 7th 8th

MATHEMATICS



1st 2nd 3rd 4th 5th 6th 7th 8th

COMMITMENT TO STEWARDSHIP

We are encouraged to live as Jesus taught us to live and accept our responsibility as disciples for serving others. Middle school students have required service hours including: 6th Grade - 10 hours, 7th Grade - 12 hours and 8th Grade - 14 hours.

WHERE IS THE CLASS OF 2016?

- ◆ **Catholic High Schools** - Frassati, Incarnate Word, St. Agnes, St. Thomas, Regis in Colorado, Cascia Hall in Oklahoma
- ◆ **Private High Schools** - Concordia, Woodlands Christian Academy
- ◆ **Public High Schools** - College Park, Conroe, Klein, Montgomery, The Woodlands, Tomball

SCHOOL SUPPORT SYSTEMS...

- ◆ **Governance** - The Parish Education Council delegates responsibility to the School Advisory Committee to conduct school business. The SAC has Finance & Advancement Subcommittees.
- ◆ **Parent Organization** - Paduan Parents

We Transform the World!

**CATHOLIC
SCHOOLS**

THE ARCHDIOCESE OF GALVESTON-HOUSTON



FINANCIAL INFORMATION

Fiscal Year Ended 6/30/16 (in thousands)

Income	Actuals
Tuition & Fees	3,443
Tuition Assist. (Parish)	145
Tuition Assist. (Other)	198
Programs	305
Advancement (Net)	236
Other	28
Total Income	4,355
Expenses	
Salaries & Benefits	3,314
Admin. & Operations	528
Paid to Parish	370
Programs	162
Other	13
Total Expenses	4,387

Net Cash Flow **(-32)**
(Funds from reserves used to cover negative balance.)

Endowment Balance 68

Budget 2016-2017 (in thousands)

Income	
Tuition & Fees	3,520
Tuition Assist. (Parish)	160
Tuition Assist. (Other)	197
Programs	244
Advancement (Net)	286
Other	27
Total Income	4,434
Expenses	
Salaries & Benefits	3,378
Admin. & Operations	538
Paid to Parish	383
Programs	114
Other	17
Total Expenses	4,430
Net Cash Flow	4
Cost per Pupil	\$9,350
Tuition/Application Fee per student, K-8th	\$7,950
Difference (Gap)	\$1,400

(The Gap is filled annually through fundraising and benefactor support, additional fees, sound financial practice and when needed, reserve funds. Thank you in advance for your support in bridging the Gap.)

