

Where Does It All Go?



Providing help - creating hope.



AND...

Long Valley Community Assistance Program. (LVCAP), an Interfaith Food Pantry housed in the Long Valley Presbyterian Church. (LVCAP.org)

Note, St. Luke, OLM, & St. Mark Parishes are participating members.



Connect With Us!



We will need and will depend upon your generosity throughout the year to make this ministry a success. Let's all open our hearts so we can sustain our Helping Hands of St Luke!

Email: Dr. Stephen Deehan, DMD:
sydeehan@aol.com
Cell: 201-317-6939
Flock Notes: login.flocknote.com



Hands of St. Luke Pantry

A Roman Catholic Community

Our ministry has developed out of our desire to help serve those that are truly in need. We must forget the misconception that the hungry are only those living on the street and in the cities. Nowadays, hunger is affecting more of our neighbors, our friends, the unemployed, and more areas of society.

Ours is not a one-time food collection, but an ongoing weekly effort within the parish.

DO NOT PASS BY
A MAN IN NEED
OF HELP, FOR YOU
MAY BE THE HAND
OF GOD TO HIM.

... PROVERBS 3:27



Non-perishable items, canned goods of all sorts such as rice, beans, cereals, oatmeal, flour, sugar, baking needs, pastas, canned fruits, hearty soups, jarred sauces, boxed milk and individual drink cartons, condiments, oils. An expanded list and collection baskets are in St. Luke parish lobby this and every weekend.

Food gift cards also welcomed to add to fresh food needs.

Listen to the story. . .

<https://youtu.be/t78tXpsMl38>



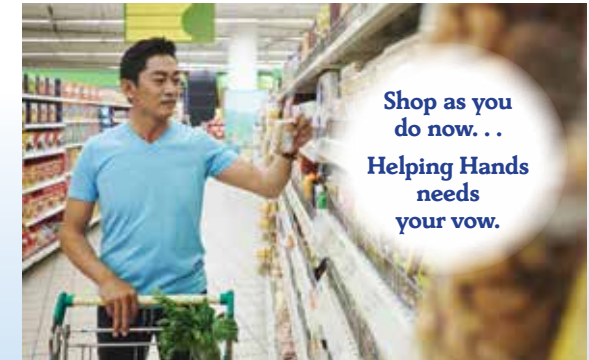
Nine minute video of Steve Aduabato on-location to the Father English Food Pantry in Paterson to talk to the people who are helping members of their community through healthy food education.



The Father English Food Pantry also supports local food pantries in parishes and diocesan affiliates by filling in gaps; when there are needs in the local pantries. The Father English Center works collaboratively with Catholic Charities, Hope House (Dover), and Partnership for Social Services Food Pantry (Franklin) to provide help and create hope for those throughout 3 counties.

Ways You Can Help!

- Donate food at the parish
- Give food cash cards
- Volunteer to organize, stock our pantry, and ship food to our recipient organizations.



Shop as you do now. . .
Helping Hands needs your vow.



Bring some food, as much as you can!



So, volunteers can stuff the van!