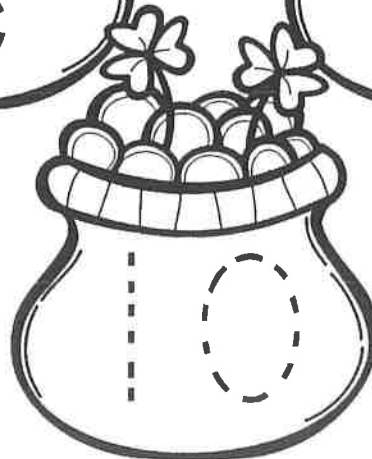
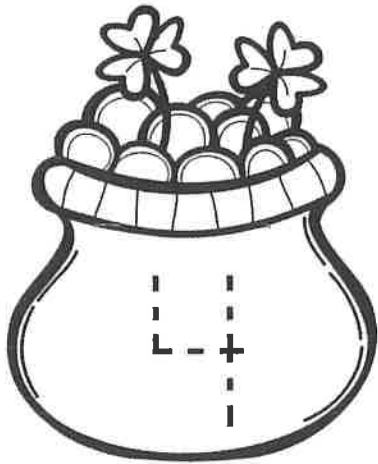
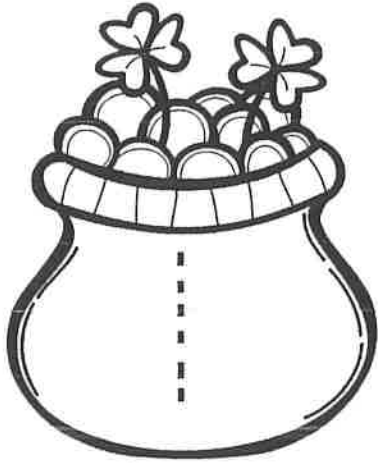
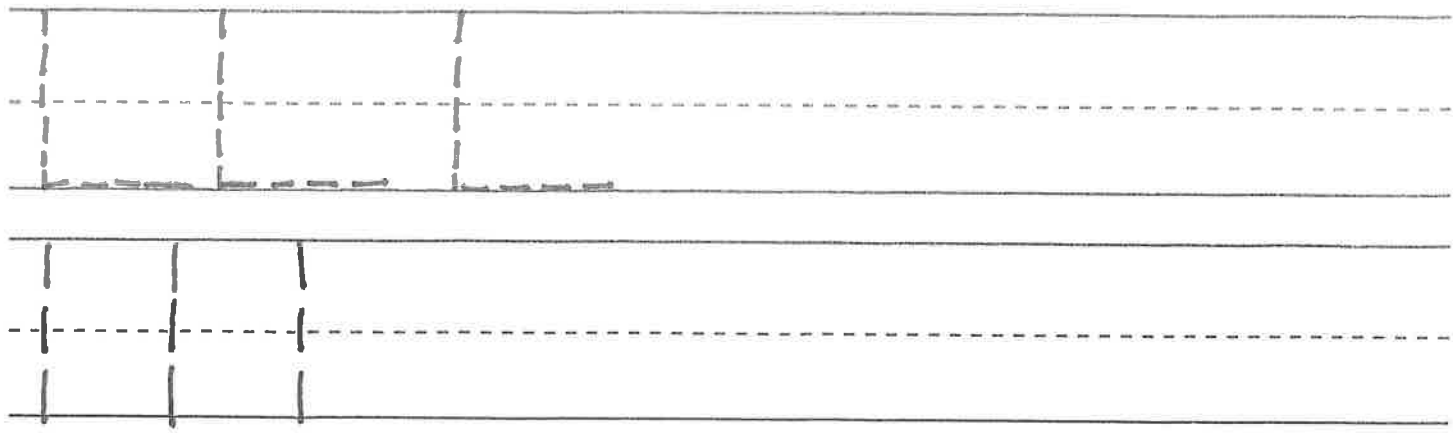


St. Pats Trace and Count

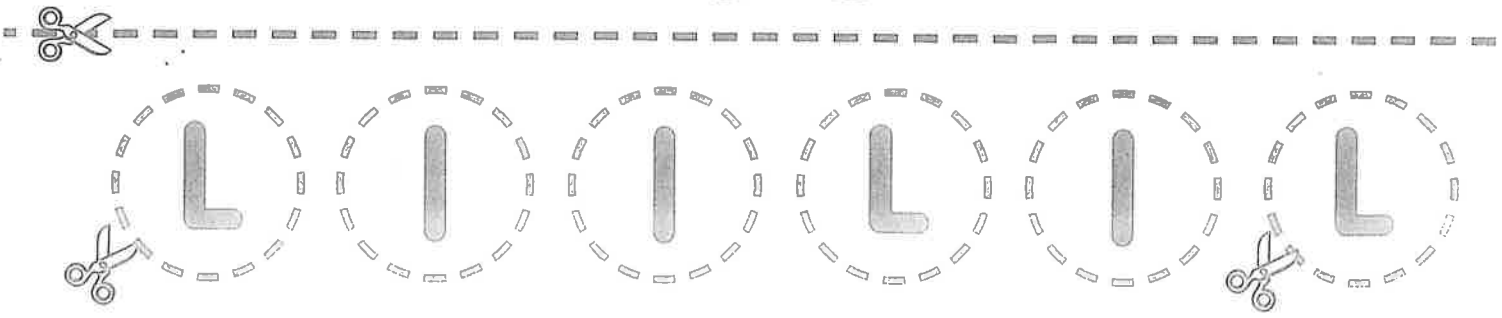
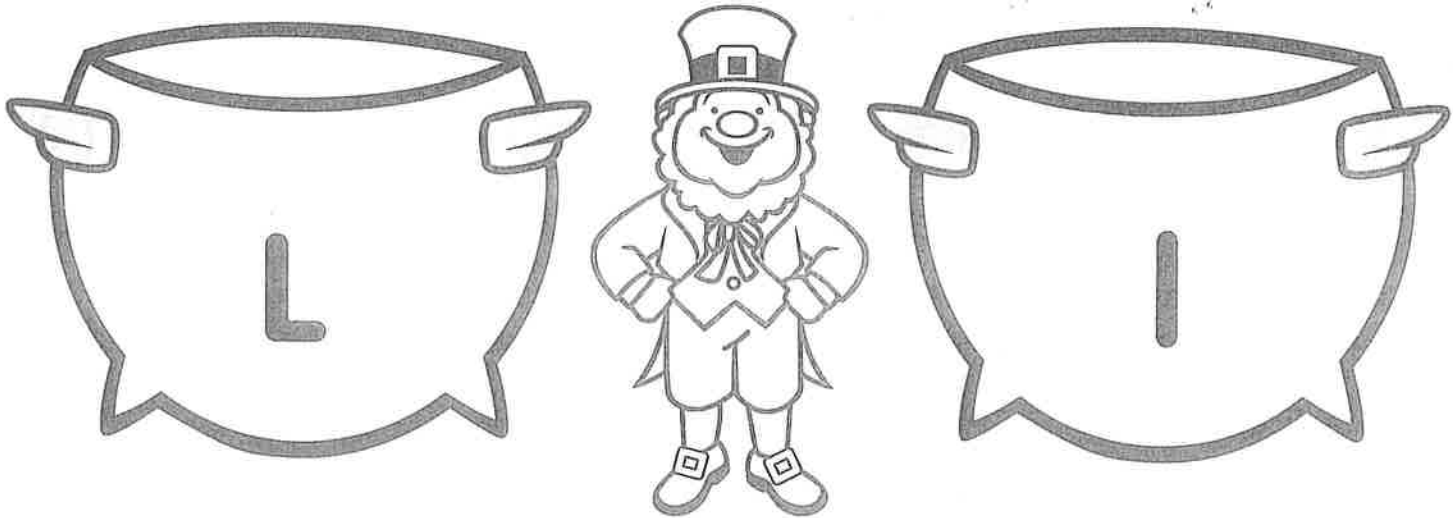


Leprechauns Love Big L and Little l

©2011 Scholastic Inc. Permission granted to reproduce this page for classroom use only.



Now cut out the upper- and lowercase letters at the bottom. Paste them in the correct pot.

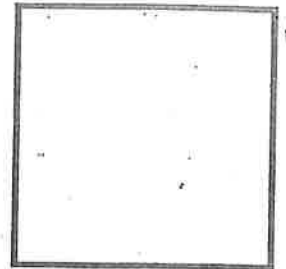
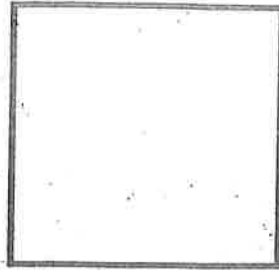


Name _____

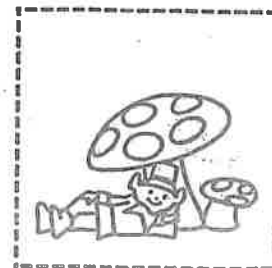
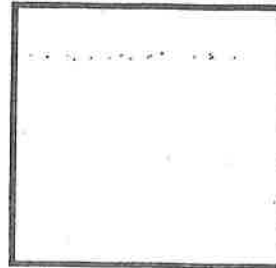
St. Patrick's Day

Leprechauns are make-believe little people. They come out on St. Patrick's Day, some people say.

Cut and paste here the leprechauns **above** things.



Cut and paste here the leprechauns **below** things.



Leprechaun Pattern

Use with "As Good As Gold" on page 34.

