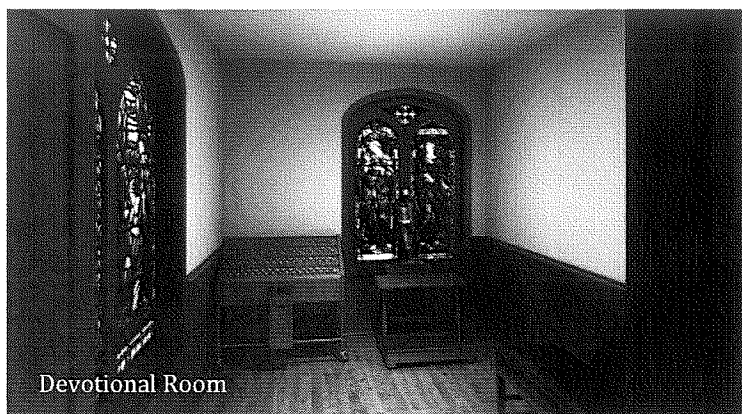


Over \$2,500,000 pledged from ~200 families

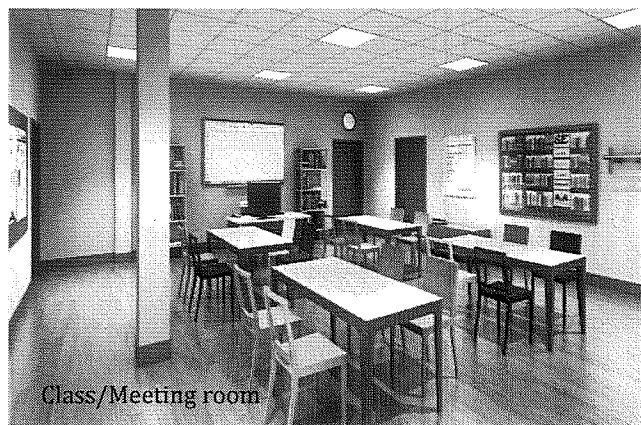
We are thankful for the generosity of those families who have responded early and made a commitment to our Capital Campaign. We are truly grateful for your generosity!

The parish family of St. Patrick's Church is asking everyone to make your commitment today. **From the beginning, this campaign has been based on the idea of equal sacrifice, not equal amount. We need gifts of all sizes to be successful. We need everyone to participate to the best of their ability.** If you are able to consider a gift of \$5,000, \$10,000, \$15,000, \$25,000 or above, we ask that you prayerfully consider doing so for the benefit of St. Patrick's.

Our campaign volunteers have begun reaching out to those families who have yet to respond and will continue to do so over the coming weeks.



Devotional Room



Class/Meeting room



Stewardship thought from this week's gospel

*"And then they will see the Son of
Man coming in the clouds with
great power and glory."*

MARK 13:26

We will all have that day when we are standing before God, reflecting on our lives. When this happens and God asks each of us, "What have you done with the gifts that I have given you?" How will we respond?

If you have any questions, please contact the campaign office at
860.677.2639 or campaign@stpatsfarm.org