

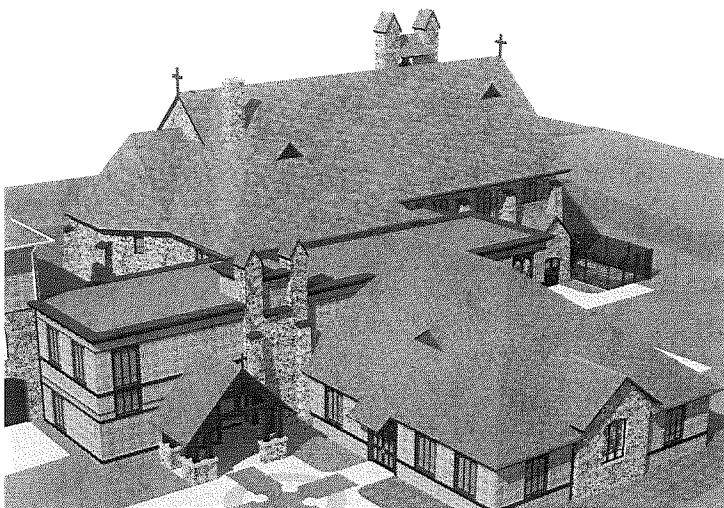
Over \$2,830,000 pledged from 300 families

We are thankful for the generosity of those families who have responded and made a commitment to our Capital Campaign, bringing us to over 94% of our goal and just \$170,000 shy of our goal!!!. We are truly grateful for your generosity!

If you haven't made your gift, we ask that you prayerfully **consider making your gift today** for the benefit of St. Patrick's. We are so close to achieving our goal. We ask you to be the families that put us over the top!

It's not too late to make your gift!

Total Gift	10% Down payment	3 Annual payments	12 Quarterly payments	36 Monthly payments	Daily Sacrifice
\$10,000	\$1,000	\$3,000	\$750	\$250	\$8.22
\$8,000	\$800	\$2,400	\$600	\$200	\$6.58
\$6,000	\$600	\$1,800	\$450	\$150	\$4.93
\$5,000	\$500	\$1,500	\$375	\$125	\$4.11
\$4,000	\$400	\$1,200	\$300	\$100	\$3.29
\$3,600	\$360	\$1,080	\$270	\$90	\$2.96
\$3,000	\$300	\$900	\$225	\$75	\$2.47
\$2,400	\$240	\$720	\$180	\$60	\$1.97
\$2,000	\$200	\$600	\$150	\$50	\$1.64



If you have any questions, please contact the campaign office at
 860.677.2639 or campaign@stpatsfarm.org