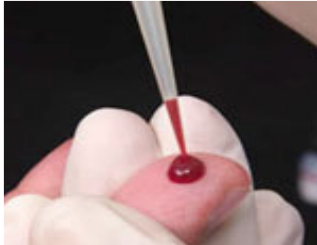


Other Screenings Available:



Bone Density \$25
(Ladies only)
Free with 3 vascular



Cholesterol \$45
PSA \$65

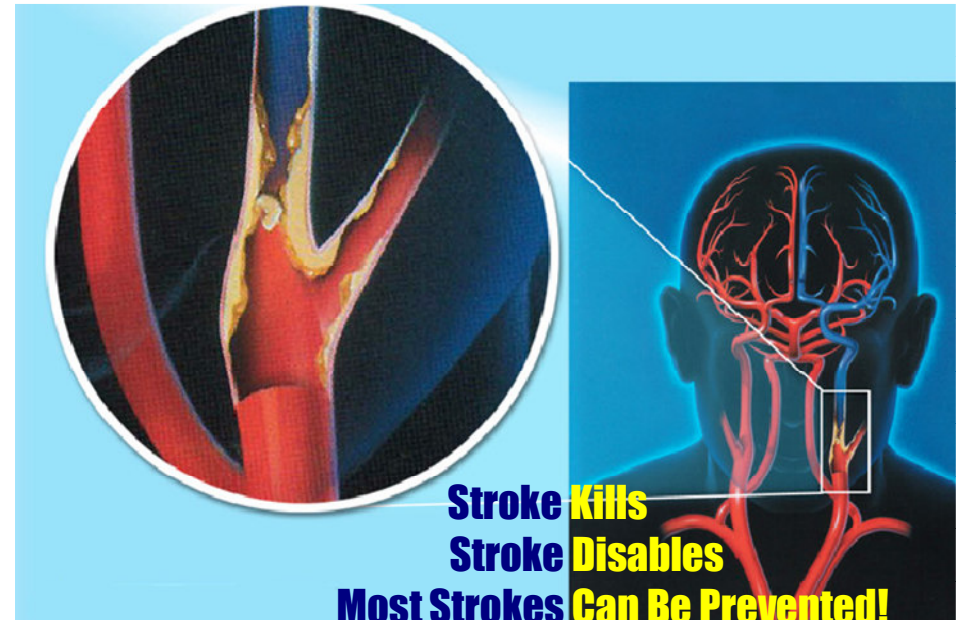


AFIB \$25
(Abnormal heart rhythm)
Free with 3 vascular



STROKE SCAN, INC.

*"Prevention is Your Key to
Quality Health"*



Warning signs and symptoms of stroke:

- Sudden temp. weakness or numbness of face, arms, legs.
- Sudden loss or shading of vision.
- Sudden loss of speech, or trouble understanding speech.
- Sudden unexplained headache.
- Sudden memory loss.
- Sudden severe dizziness.

Preparations necessary for screening:

- Wear two-piece comfortable outfit with short sleeves.
- No panty hose, dresses or skirts
- No caffeine 4 hours prior to screening.
- Fast for 8 hours if taking cholesterol test.
- (Bring a snack with you)
- If you are diabetic, EAT!

If you are taking medication, continue to take it

When: Saturday March 12th 2011

Where: St. Maximilian Kolbe

APPOINTMENTS ARE NECESSARY

For appointment call toll free 1-866-935-7226

Unless you are showing symptoms and warning signs, normally doctors will not order these screenings, and insurance companies will not pay for these screenings.

A Board Certified Radiologist will interpret all vascular scans

Results are mailed directly to you and only you.

Stroke Scan, Inc. 423 Mason Park Blvd. Katy TX 77450

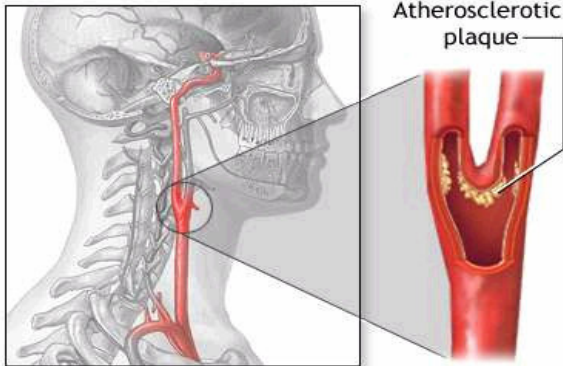
www.strokescaninc.com

Stroke Screening - \$45 Color-Flow Doppler Imaging

In Just 5 minutes we can help you prevent an ischemic stroke caused by carotid artery plaque. By using the same painless, state of the art ultrasound technology and technicians that hospitals use, we are able to detect fatty plaque build up in the carotid arteries that can cut off the blood supply to the brain causing a stroke.

*During the course of this test, we can also detect cysts or tumors on the thyroid gland that could be cancer.

** Due to high costs, typically your doctor will only order these tests if you are showing symptoms.



DID YOU KNOW THIS ABOUT STROKE?

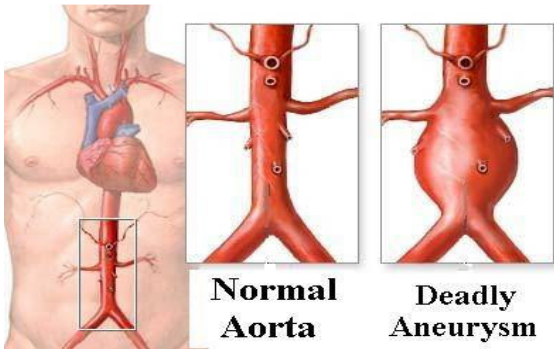
- ❖ 3rd leading cause of death behind heart disease and cancer.
- ❖ 2nd leading cause of death in women, more than breast cancer.
- ❖ #1 reason for and nursing home admissions in the USA.
- ❖ 80 percent of all stroke victims show no prior symptoms.
- ❖ 75 to 80 percent of all strokes are preventable.

Abdominal Aortic Aneurysm Screening - (AAA) - \$45

In just 5 minutes, we can detect an AAA and help prevent a rupture of the main artery in your body.

We are able to detect any bulging of the abdominal aorta which can lead to sudden death.

*During this test, can also detect gall stones, cysts or tumors on the internal organs that could be cancer.



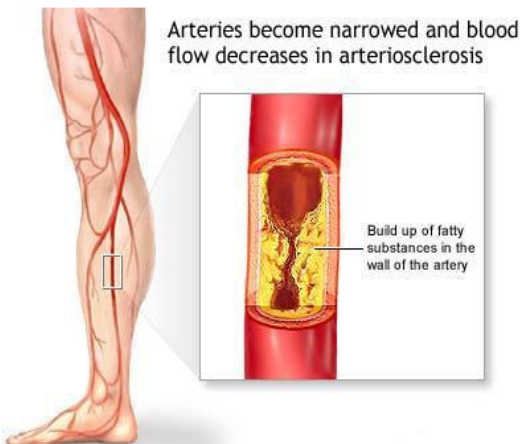
DID YOU KNOW THIS ABOUT AAA?

- ❖ Typically first symptom is sudden death.
- ❖ Ruptured AAA proves **95% fatal**.
- ❖ Ruptured AAA is the 14th cause of death in the USA.
- ❖ Lucille Ball, Conway Twitty died from this.

P.A.D. Ankle Brachial Index Screening - (ABI) - \$45

In Just 5 minutes, we can detect blocked arteries in your legs.

We are able to detect plaque build up or hardening of the arteries in the legs.



DID YOU KNOW THIS ABOUT P.A.D.?

- ❖ The number one reason for leg amputations in the USA.
- ❖ People w/ blocked arteries in the legs are 7 to 10 times more likely to have a stroke or heart attack.

ALL 3 VASCULAR + (Free AFIB) + (Free OSTEO) = \$125

ALL 3 VASCULAR + (Free AFIB) + (Free OSTEO) + CHOL = \$170

(Men) ALL 3 VASCULAR + (Free AFIB) + CHOL + PSA = \$235

(Women) ALL 3 VASCULAR + (Free AFIB) + (Free OSTEO) + CHOL = \$170