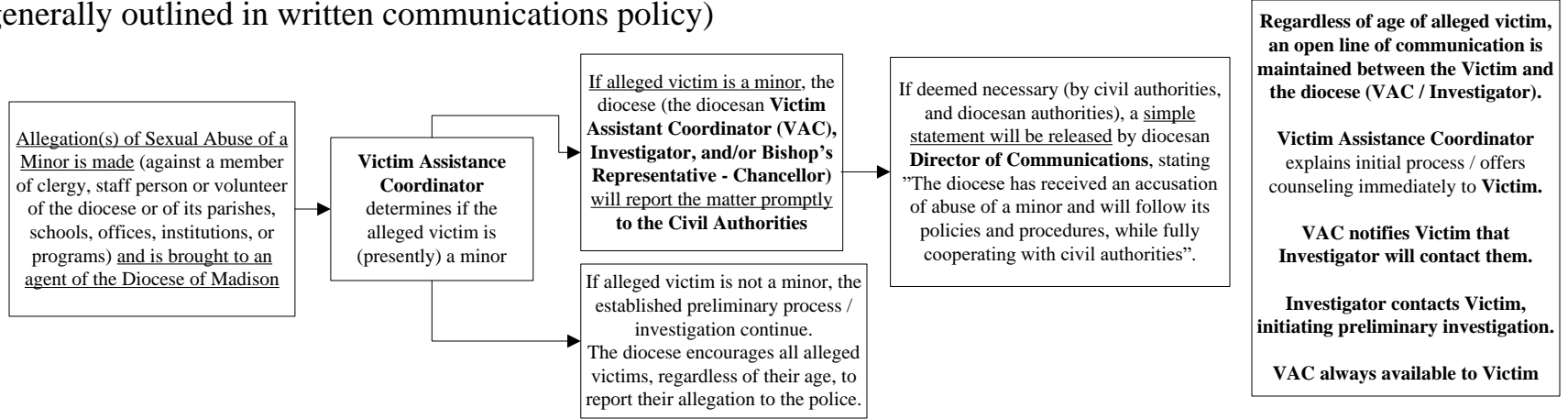


# Diocese of Madison

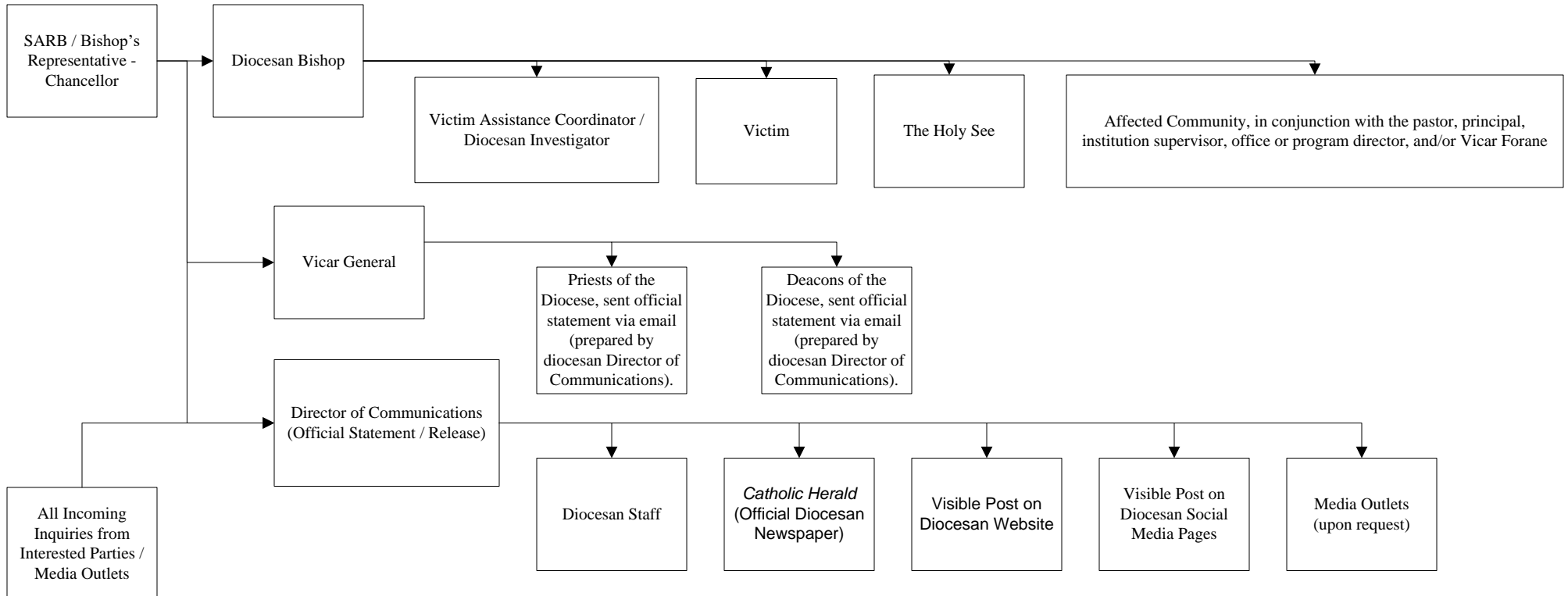
## Flowchart of Communications Regarding Allegations of Sexual Abuse of a Minor (as generally outlined in written communications policy)

### Initial Intake of Allegation



The following communications presume the conclusion of the preliminary investigatory process and the judgment (by the diocesan Sexual Abuse Review Board) that the **allegation is credible** and the established process will continue.

### Communication that allegation has been deemed credible



**This outline will remain the same for all applicable communications, including all SARB judgments, as well as all penal processes / civil and canonical judgments**