

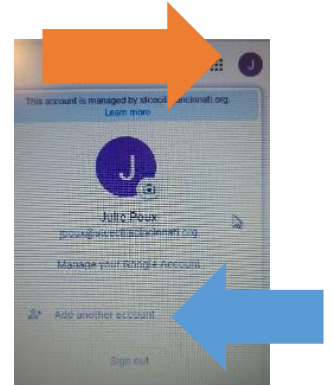


# Google Classroom

## How to Access Google Classroom Using Student Accounts

Use Student login to sign in to Google Chrome – look in the upper right hand corner to sign in.

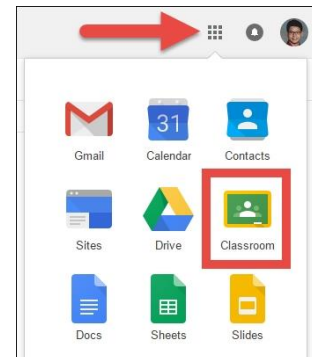
If someone is already signed in, you can click on the user icon (usually a letter unless it has been changed) in the upper right hand corner (orange arrow) and click “Add another account” (blue arrow)



If you are using a School Chromebook, student will already be signed in by signing in to Chromebook.

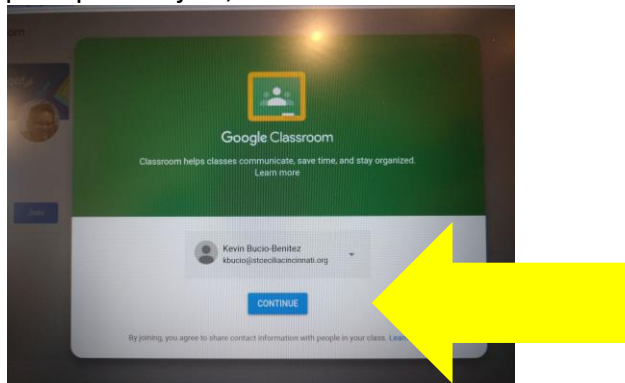
If Chromebook opens to Clever, click on a new tab (at the top – click the “+” next to the current open tab)

Click the Google Apps button (looks like a box of 9 circles) in the upper right-hand corner

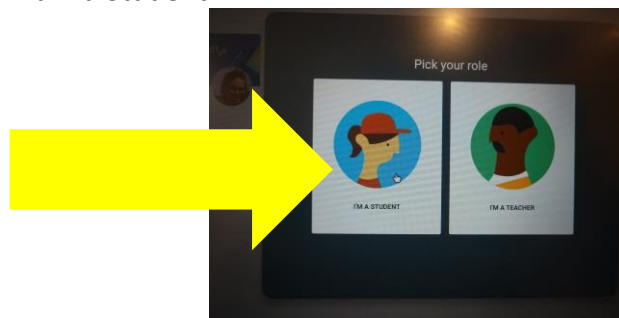


Click on “Classroom”

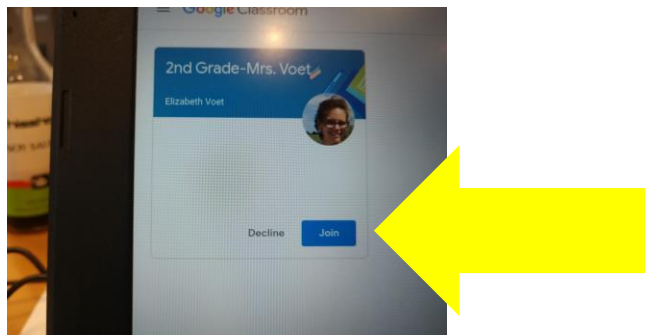
- If prompted to join, click the blue “Continue” button



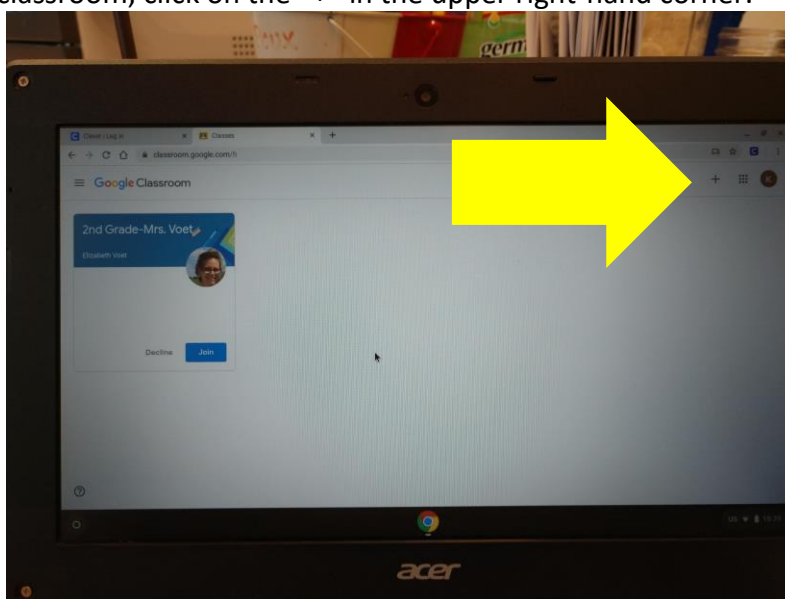
- Click “I am a Student”



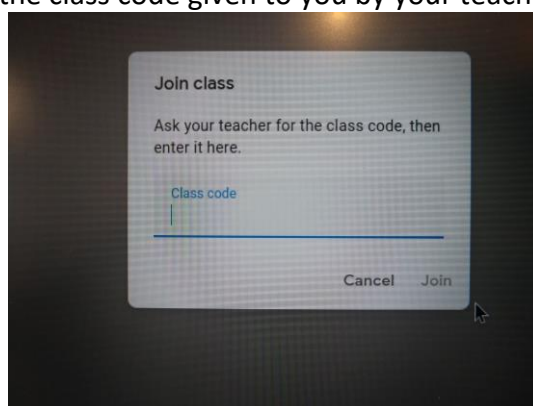
You should see a classroom (or more than one) created by your teacher(s). If you see a classroom and it asks you to join, click the blue “Join” button for each classroom.



If you need to join a classroom, click on the “+” in the upper right-hand corner.



In the box that pops up, enter the class code given to you by your teacher.



Your teachers will use Google Classroom to communicate videos, lessons and assignments. Please check it each day for what your child needs to do.