

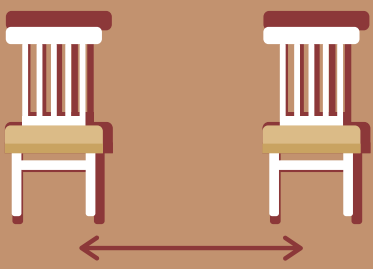
IN-PERSON FAITH FORMATION

KEY CONSIDERATIONS DURING COVID-19

DUE TO THE NATURE OF THE PANDEMIC, THESE CONSIDERATIONS ARE SUBJECT TO CHANGE AT ANY TIME, AND WILL BE SUPERSEDED BY ANY REGULATIONS, ORDERS OR GUIDELINES ISSUED BY THE STATE, LOCAL GOVERNMENT OR BISHOP BRENNAN.

PASTOR'S APPROVAL

You must have your pastor's approval and the gathering must meet the diocesan requirements shared with your pastor.

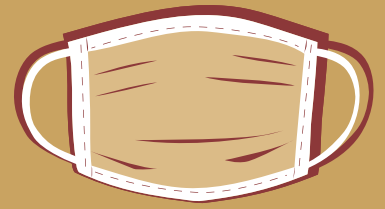


SPACE

The space should be outdoors (still maintaining safe social distancing) or in a large room with good airflow that allows a safe distancing (6-10 feet). Entrance/exit protocols should be considered to minimize interaction and door sanitation.

FACE COVERINGS

As a way of caring for others, masks or other appropriate face coverings should be worn at all times when indoors or in a space that does not allow for social distancing.



GROUP SIZE

In order to care for vulnerable teens, volunteers, and family members, consider limiting the size of the group gathering based on state restrictions and the size of your space, allowing for safe social distancing.

SANITATION

Avoid serving shared food/beverages and limit touch points to allow for proper sanitation (even for outdoor events). Make handwashing or adequate hand sanitizer available to those who attend.

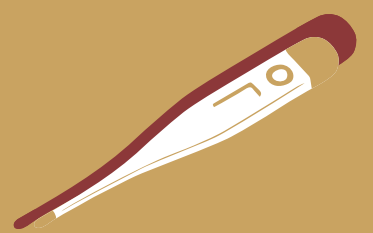


COVID-19 WAIVER

Out of respect and care for one another, all youth and adults should submit a signed COVID-19 Waiver, acknowledging that they will check for symptoms and not attend if showing any signs of illness.

RESPONSE PLAN

If someone gets ill at or after the gathering, a response plan should include quarantine plans, process for notifying participants, parents, and local county health department, potential testing, and readiness to shift programming to a virtual setting or cease programming altogether.



ALERT LEVEL

Consider your county's alert level, if your county is seeing an increase in cases and moved into a higher alert level, have plans as to when gatherings will be postponed, shifted to virtual gatherings, or canceled altogether.

Office of Religious Education and Catechesis
Diocese of Columbus

FIND MORE TIPS AND RESOURCES AT:
COLUMBUSCATHOLIC.ORG/OREC-COVID-RESPONSE

