



# relevant<sup>radio</sup> PROGRAM SCHEDULE

**LIVE and Interactive, Coast to Coast!**

JOIN THE CONVERSATION! Call our studio line at 888-914-9149

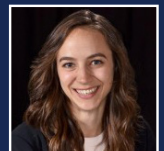
CT		Monday - Friday	Saturday	Sunday
5a 6a 7a		Morning Air <sup>®</sup>	Morning Air <sup>®</sup>	Morning Air <sup>®</sup>
8a 9a 10a		The Patrick Madrid Show	The Patrick Madrid Show The Dave Durand Show	Life is Worth Living Sunday Mass The Patrick Madrid Show
11a		The Inner Life <sup>®</sup>	The Inner Life <sup>®</sup>	The Inner Life <sup>®</sup>
12p		Daily Mass	Daily Mass	Sunday Mass from St. Paul Cathedral
12:30p		The Faith Explained	The Faith Explained	
1p		Father Simon Says <sup>™</sup>	Father Simon Says <sup>™</sup>	Father Simon Says <sup>™</sup>
2p 3p 4p		The Drew Mariani Show <sup>™</sup>	The Drew Mariani Show <sup>™</sup>	The Drew Mariani Show <sup>™</sup>
5p		The Cale Clarke Show	The Cale Clarke Show	The Cale Clarke Show
6p		Trending with Timmerie	Trending with Timmerie	The Dave Durand Show
7p		Family Rosary Across America <sup>®</sup>	Family Rosary Across America <sup>®</sup>	Family Rosary Across America <sup>®</sup>



Ashley Noronha  
*Rome Correspondent*



Mary Graham  
*Network News*



Lindsey Kettner  
*Digital Journalist*



Stephanie Foley  
*Digital Journalist*

**Listen anytime!  
On-air, online at  
RelevantRadio.com  
and on the  
FREE app!**

**Monday-Sunday Evening Encores:** 7:30p Daily Mass • 8p-11p The Patrick Madrid Show  
11p Trending with Timmerie • 12a The Inner Life<sup>®</sup> • 1a-4a The Drew Mariani Show<sup>™</sup> • 4a Daybreak<sup>™</sup>