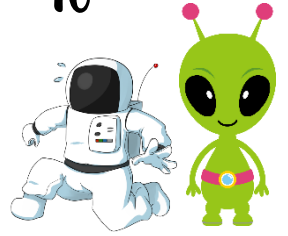


SPIRIT WEEK

NOVEMBER 12 - 16

MON MARS MONDAY

DRESS AS SOMETHING OUT OF THIS WORLD: ALIENS, STARS, PLANETS, ASTRONAUTS, ETC!
ALL GENERAL GUIDELINES BELOW MUST BE FOLLOWED.



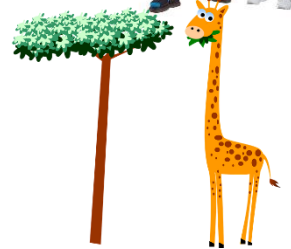
TUE TACKY TUESDAY

DRESS IN YOUR BEST TACKY CLOTHES: SOCKS AND SANDALS (WITH A BACK), FANNY PACKS, VISORS, UGLY SWEATERS, ETC! ALL GENERAL GUIDELINES BELOW MUST BE FOLLOWED.



WED WILDLIFE WEDNESDAY

DRESS UP AS YOUR FAVORITE WILD ANIMAL OR ANIMAL CARETAKER: LIONS, TIGERS, BEARS (OH MY), ZOOLOGISTS, SAFARI EXPLORER, ETC!
ALL GENERAL GUIDELINES BELOW MUST BE FOLLOWED.



THU PREPARE FOR BATTLE!

COME DRESSED AS YOUR CLASS SYMBOL OR IN YOUR CLASS COLORS/ CLASS SHIRTS ARE NOT TO BE WORN ON THIS DAY. ALL GENERAL GUIDELINES BELOW MUST BE FOLLOWED.



FRI COLOR WARS!

WEAR YOUR CLASS T-SHIRT WITH APPROPRIATE SPIRIT BOTTOMS!
COLOR HAIRSPRAY CAN BE WORN ON THIS DAY ONLY!



GENERAL REMINDERS:

SHOES WITH A BACK MUST BE WORN AT ALL TIMES.

SHORTS, DRESSES AND SKIRTS THAT DO NOT FOLLOW THE FINGERTIP TEST MUST BE WORN WITH LEGGINGS.

FACE PAINT IS ONLY ALLOWED ON FRIDAY.

TOPS ARE TO COVER BOTH SHOULDERS.

NO TUBE TOPS, MIDRIFFS, HALTER-TOPS, SPAGHETTI STRAPS, STRAPLESS, BARE BACKS, OR LOW NECKLINES ARE PERMITTED.

NO SKINTIGHT SKIRTS OR DRESSES.

CASUAL PANTS OR JEANS (NO HOLES OR SHREDS) ARE TO FIT PROPERLY (NO OVERSIZED/TIGHT CLOTHING).

SCHOOL UNIFORMS MUST BE WORN IF NOT DRESSING ACCORDING TO THEME

SPIRIT POINTS WILL BE AWARDED TO THOSE WHO DRESS ACCORDING TO THE THEME AND CORRECTLY!

SPIRIT POINTS WILL BE DEDUCTED TO THOSE DRESSED INCORRECTLY