

ETR Process

An evaluation is requested by the parent or the Intervention Assistance Team (IAT). Collected data (**SMSP**) is provided to the public school district where the school resides.

Did the public school district determine that there is credible evidence of a disability based on documented data (**SMSP**)?

No

Student Monitoring and Support Plan, Part 3 is written by classroom teacher including Tier 2 interventions. Tier 1/ universal accommodations are allowable.

Yes

Does the parent consent for evaluation?

No

Yes

Data is collected through a multi-factored evaluation (MFE) by the public school district where the school resides. An Evaluation Team Report (ETR) is written.

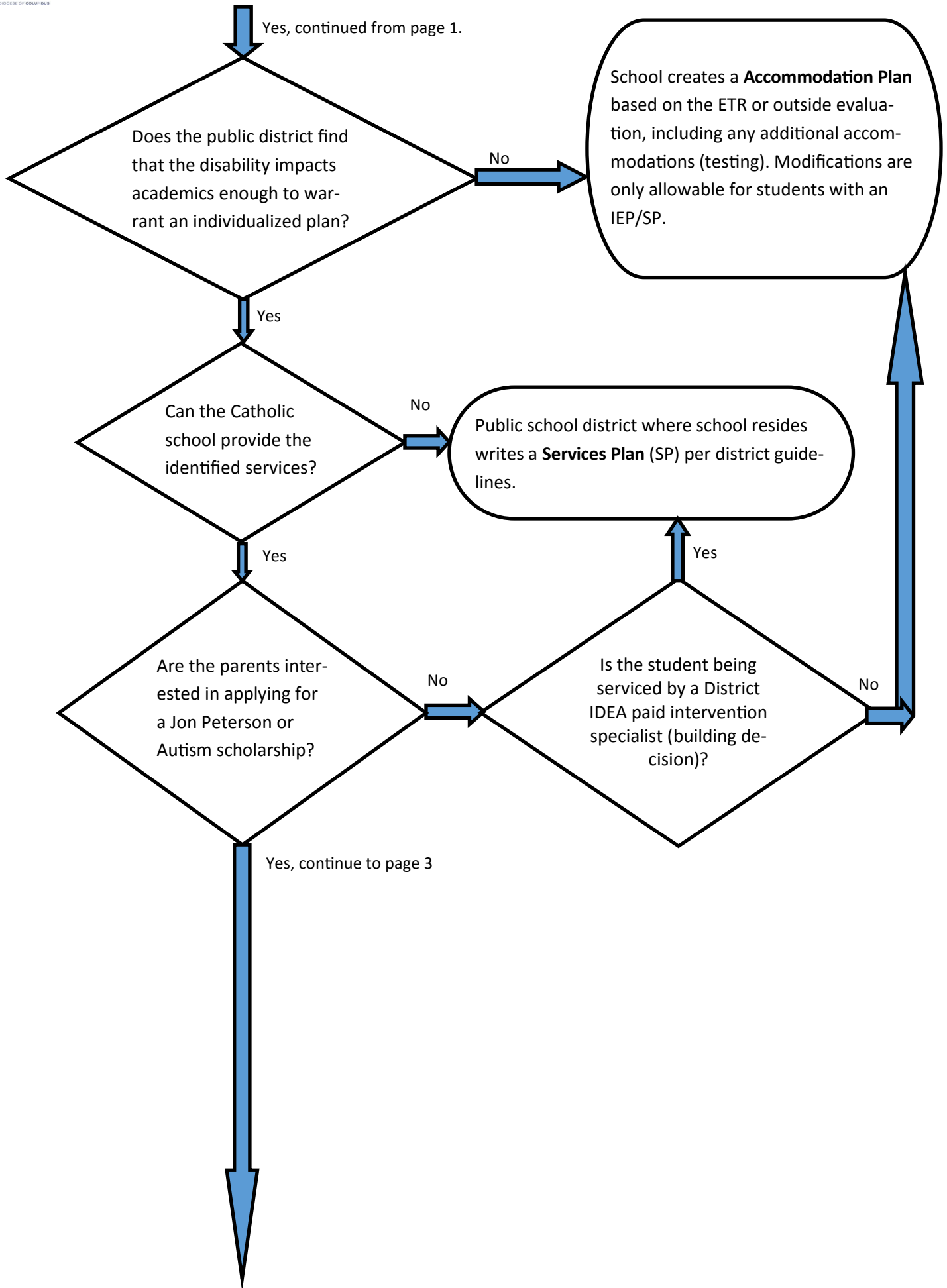
Has a disability under IDEA been found?

No

School creates an **Accommodation Plan** based on the ETR or outside evaluation, including any additional accommodations (testing). Modifications are only allowable for students with an IEP/SP.

Yes, continue on to page 2.

ETR Process



ETR Process

