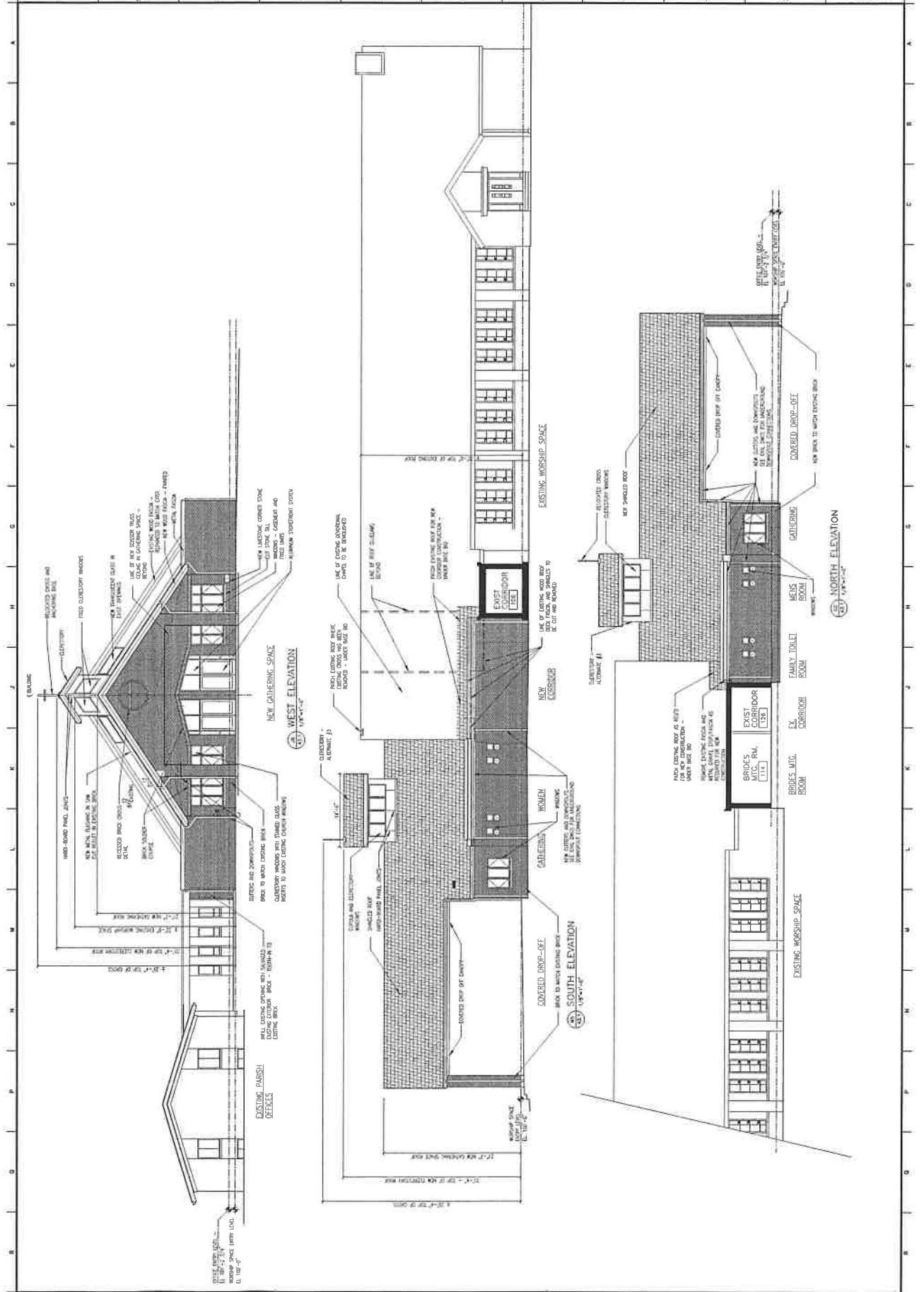


REVISIONS:  
1. 4/15/20  
2. 5/15/20  
3. 7/15/20  
4. 8/15/20  
5. 9/15/20  
6. 10/15/20  
7. 11/15/20  
8. 12/15/20  
9. 1/15/21  
10. 2/15/21  
11. 3/15/21



NEW GATHERING SPACE  
NEW LUTHERAN CORNER STONE  
NEW LUTHERAN CORNER STONE  
NEW LUTHERAN CORNER STONE  
NEW LUTHERAN CORNER STONE

EXISTING WORSHIP SPACE  
NEW EXTERIOR  
EXISTING CORNER STONE  
EXISTING CORNER STONE  
EXISTING CORNER STONE

NEW GATHERING SPACE  
NEW LUTHERAN CORNER STONE  
NEW LUTHERAN CORNER STONE  
NEW LUTHERAN CORNER STONE  
NEW LUTHERAN CORNER STONE

EXISTING WORSHIP SPACE  
NEW EXTERIOR  
EXISTING CORNER STONE  
EXISTING CORNER STONE  
EXISTING CORNER STONE

NEW GATHERING SPACE  
NEW LUTHERAN CORNER STONE  
NEW LUTHERAN CORNER STONE  
NEW LUTHERAN CORNER STONE  
NEW LUTHERAN CORNER STONE

EXISTING WORSHIP SPACE  
NEW EXTERIOR  
EXISTING CORNER STONE  
EXISTING CORNER STONE  
EXISTING CORNER STONE

NEW GATHERING SPACE  
NEW LUTHERAN CORNER STONE  
NEW LUTHERAN CORNER STONE  
NEW LUTHERAN CORNER STONE  
NEW LUTHERAN CORNER STONE

EXISTING WORSHIP SPACE  
NEW EXTERIOR  
EXISTING CORNER STONE  
EXISTING CORNER STONE  
EXISTING CORNER STONE

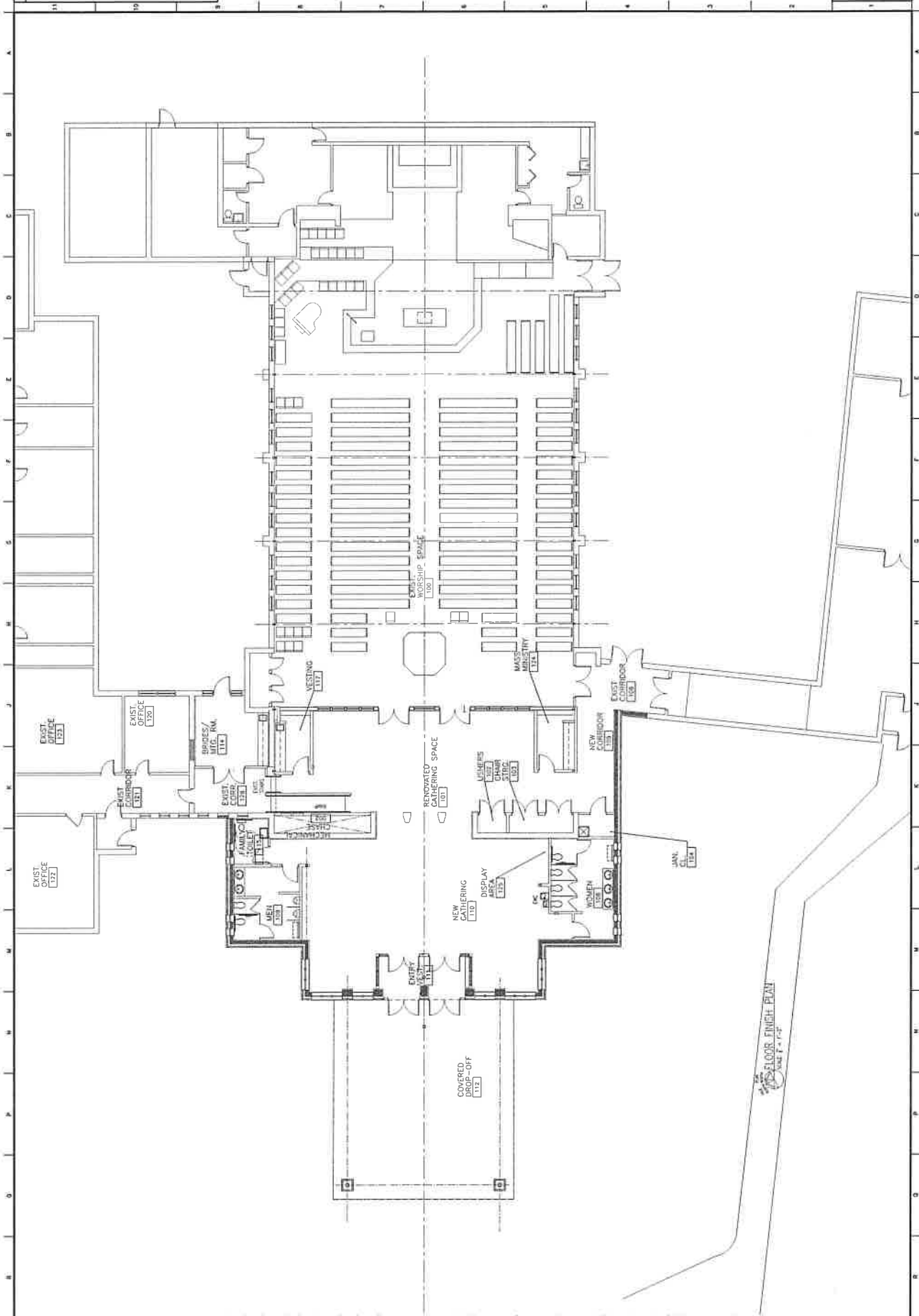
NEW GATHERING SPACE  
NEW LUTHERAN CORNER STONE  
NEW LUTHERAN CORNER STONE  
NEW LUTHERAN CORNER STONE  
NEW LUTHERAN CORNER STONE

EXISTING WORSHIP SPACE  
NEW EXTERIOR  
EXISTING CORNER STONE  
EXISTING CORNER STONE  
EXISTING CORNER STONE

| NO. | DATE     | DESCRIPTION                   |
|-----|----------|-------------------------------|
| 1   | 11/14/11 | ISSUE FOR PERMITS AND BIDDING |

SWANSON DESIGN STUDIOS  
 ARCHITECTURE  
 JAYSON, MICHAKI, ANDREW  
 4800 W. WASHINGTON ST.  
 FRI, (917) 482-9028  
 (917) 482-9290 ARCHITECTURE  
 HOWELL, MI 48843

DATE: 2/19/21  
 JOB NUMBER: 2019.036  
 SHEET NUMBER: A10.1



FLOOR FINISH PLAN  
 SCALE: 1/8" = 1'-0"