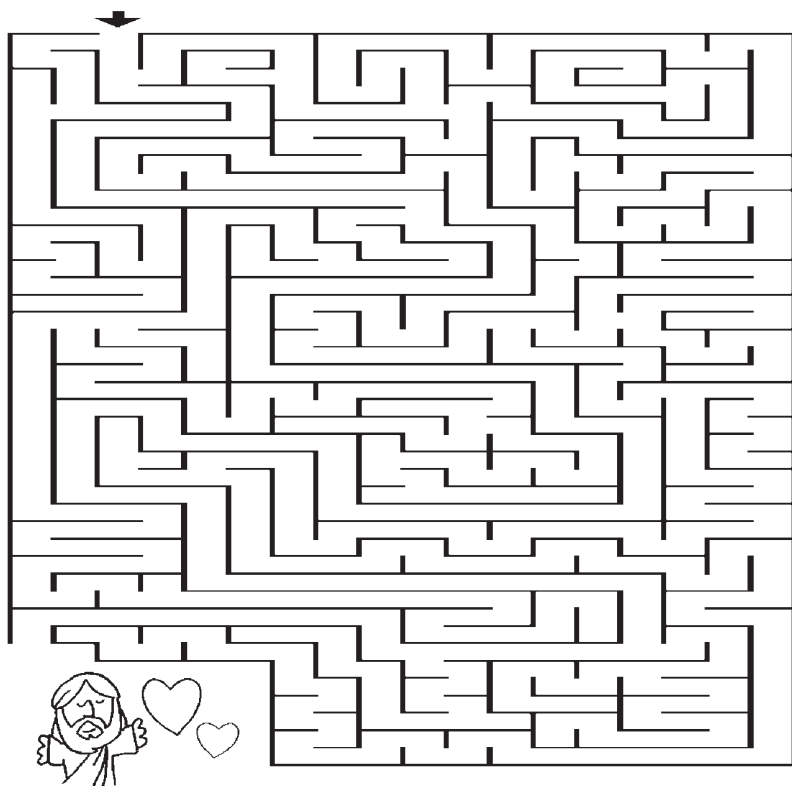


## PUZZLE

Find your way through the maze to Jesus.



## MISSION

Have you ever learned something about God that was hard to understand? Talk about it with your family, and together pray for each other. Ask the Holy Spirit to help you learn what God wants you to.

# GROWING Gospel

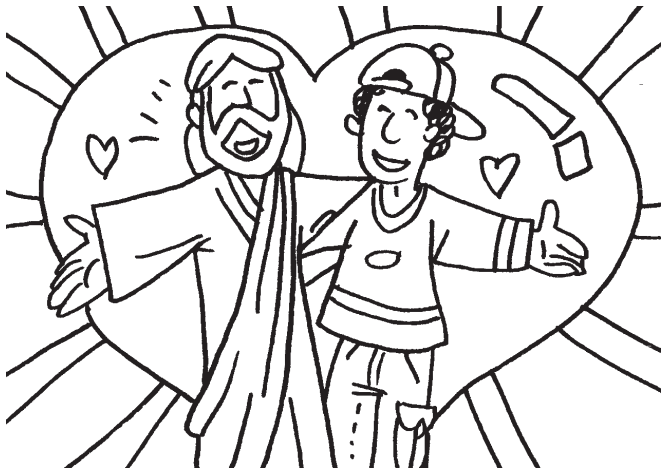
WITH THE

CYCLE B

## COLOR

Read the Gospel of the week and color the image.





## GOSPEL

After Jesus compared himself to manna, and said that he was sent from heaven, many of his followers turned away from him. They just could not accept what Jesus was saying. It was too hard for them to understand. We have something they did not have. We have the Holy Spirit to help us. Sometimes what we learn might be hard for us to understand, too, but we never need to walk away. We can have faith in Jesus. We can ask him to help us.

## PRAYER

Dear God, give me the faith to trust Jesus always. Amen.

## DRAW

Draw a picture of yourself next to Jesus.