

# Pastoral and Financial Report 2009

## The Church of Saint Ann Lawrenceville, New Jersey

Dear Parishioner,

Our Pastoral and Financial Report for 2008-2009 (July 1, 2008 - June 30, 2009) is a tribute to the generosity of our parishioners, the careful spending of the parish staff and the continual oversight of the **Parish Finance Committee**, the **Parish Pastoral Council**, as well as our **Saint Ann School Finance Committee**. Since June of 2008, our country has faced a serious economic recession. There is no sector of our society that has escaped the impact of this recession. It has presented a challenge to the personal resources of each parishioner and to our parish. Yet, despite this challenge, we have managed to end the year in the black. Many thanks to all who have helped in so many ways to make this possible. Whether you have continually remembered our parish in your prayers, maintained or increased your weekly offering in spite of personal hardship, volunteered your time or talents so that we could continue to provide services, helped us to save by turning off the lights or conserving paper or energy, know that we are grateful.

For the first time in a long time, our total income is down from the previous year, even though our weekly collections have increased. This shortfall is due primarily to two factors: the conclusion of our capital campaign, and interest at a much lower rate than anticipated when we established our budget. Both of these factors are understandable, and we have made adjustments for this change in this year's budget.

I am especially proud of the fact that in this time of financial challenge for so many, we have been able to increase our total parish giving by over \$50,000. I am convinced that it is because of our willingness as a parish to tithe, to give from the top of our income that the Lord has blessed us, and will continue to bless our generosity. I am grateful to the **Tithing Committee** who helps us to distribute our tithe in a fair and equitable manner.

As we move into the new financial year, we are working diligently to support and affirm the many ministries which help us to be the face, and heart, and hands of Christ to so many. We are able to serve the community, strengthen faith, celebrate the sacraments, provide for the spiritual and corporal works of mercy, educate across the lifespan, heal the spiritually broken, and respect the dignity of human life (elements of our **Parish Mission Statement**) because of your consistent, proportionate, and planned giving to this wonderful Church of Saint Ann.

This year, we welcome into partnership with our parish community, the **Center for Faith Justice**, who have taken over the maintenance and upkeep of our old convent (24 Rossa Ave). The Center for Faith Justice has a ten year history of providing high school and college students an opportunity for service and reflection on Catholic Social Principles. In addition to saving us the cost of maintaining the property at 24 Rossa Avenue, we hope that they will inject new vitality into our programs for youth and young adults, and help us all to root our service to others in the principles of Catholic Social Justice. Please keep this emerging partnership in your prayers.

*R. Vincent Hartland*



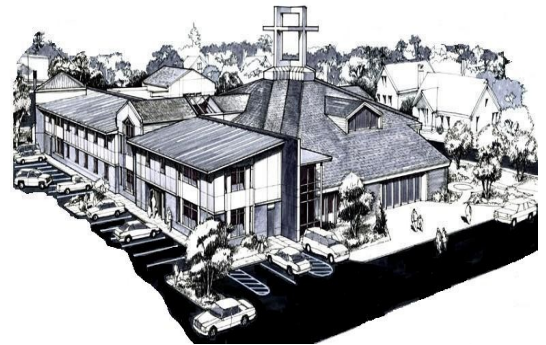
We baptize Liam Pascal Hocquaux and welcome him into our Church.

### Mission Statement

**The Church of Saint Ann  
in Lawrenceville,  
is a Roman Catholic family  
of faith, built on the inspiration  
of past generations,  
to serve the community  
by loving God and our neighbor.  
We strengthen faith,  
celebrate the sacraments,  
provide for the spiritual and  
corporal works of mercy,  
educate across the life span,  
heal the spiritually broken,  
and respect the dignity  
of human life.  
We live the Gospel  
and seek Christ in all people.**

# Pastoral Report 2008 - 2009

(July 1, 2008 through June 30, 2009)



|                                   | <u>2008</u> | <u>2009</u> |
|-----------------------------------|-------------|-------------|
| Baptisms                          | 108         | 95          |
| Weddings                          | 26          | 15          |
| Funerals                          | 67          | 82          |
| <br>                              |             |             |
| Registered Families               | 3070        | 3100        |
| <br>                              |             |             |
| New Registrations                 |             |             |
| Families                          | 151         | 119         |
| Individuals                       | 393         | 306         |
| <br>                              |             |             |
| First Communions                  | 113         | 110         |
| <br>                              |             |             |
| Confirmations                     | 93          | 87          |
| <br>                              |             |             |
| Affordable Counseling Sessions    | 103         | 121         |
| Hours of Spiritual Direction      | 700         | 720         |
| <br>                              |             |             |
| Parishioners involved in Ministry | 809         | 759         |
| Parish Ministries                 | 100         | 108         |
| <br>                              |             |             |
| Saint Ann Helping Hands           |             |             |
| Hours of Service                  | 1382        | 1,148       |
| <br>                              |             |             |
| Saint Vincent DePaul Society      |             |             |
| People Served                     | 82          | 110         |
| Money/Resources Dispersed         | \$12,335    | \$13,345    |
| <br>                              |             |             |
| Homebound Regularly Visited       | 44          | 49          |
| Sick Calls                        | 107         | 113         |
| Tandem Health Care                | weekly      | weekly      |
| <br>                              |             |             |
| Religious Education Enrollment    | 572         | 625         |
| Catechists                        | 47          | 56          |
| <br>                              |             |             |
| Saint Ann School Enrollment       | 293         | 280         |
| School Staff                      | 30          | 29          |

## PARISH TRUSTEES

Lorraine Colavita  
Charles Connell

## PARISH PASTORAL COUNCIL

|                     |                    |
|---------------------|--------------------|
| Jack Armstrong, Jr. | Warren Hyer, Jr.   |
| Michael Barkley     | Robert Kusek       |
| Kenneth Bernabe     | Harold MacDonald   |
| Thomas Cahill       | Michael Meagher    |
| Helen Carroll       | Kathi Morley       |
| Mark Daniel         | Eileen Murphy      |
| Yvonne Daniel       | Michael Olechowski |
| Virginia Forcina    | Carmela Roberts    |
| Joan Goodman        | Sean Weaver        |

## PARISH FINANCE COMMITTEE

Jack Armstrong, Jr.  
Christine Barranco  
Father Vincent Gartland  
Harold Laudien  
Thomas Ponting  
Rita Reven  
Rosemarie Ryan

## SCHOOL FINANCE COMMITTEE

Christine Barranco  
Rob Kuser  
Margaret Marino  
Jack McKenna  
Rita Reven  
Rosemarie Ryan

The local parish community is where the Church is most vibrant, most alive, most fully the Body of Christ.

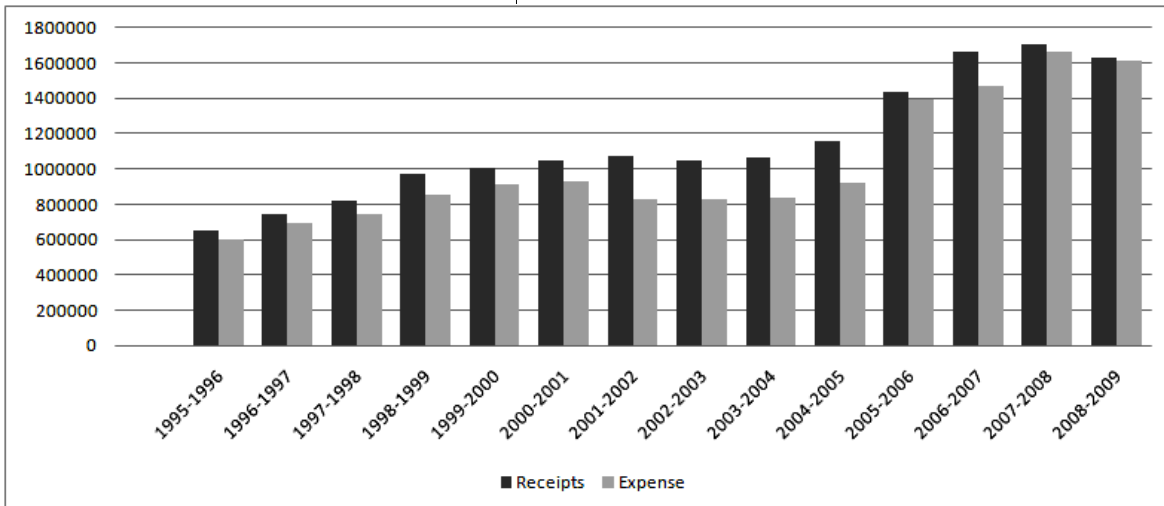
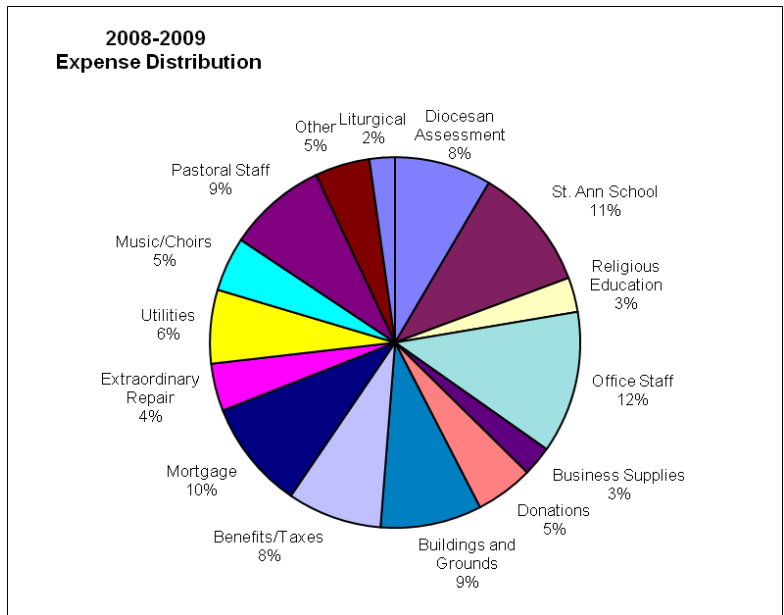
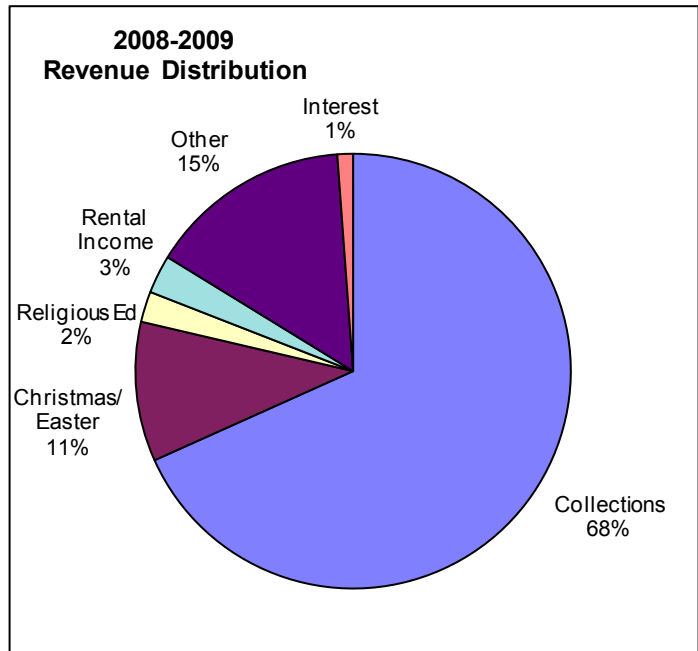
# Financial Report 2008 -2009

## Church of Saint Ann Financial Statistics (includes St. Michael Campus)

|                     | 2008-2009          | 2009-2010          |
|---------------------|--------------------|--------------------|
| <b>Income:</b>      | <b>ACTUAL</b>      | <b>BUDGET</b>      |
| Weekly Collections  | \$1,112,337        | 1,099,000          |
| Christmas/Easter    | 169,096            | 170,000            |
| Interest            | 18,894             | 30,050             |
| Religious Education | 37,096             | 50,600             |
| Rental Income       | 46,379             | 46,944             |
| <b>OTHER:</b>       |                    |                    |
| Candles             | 27,930             | 29,000             |
| Donations           | 48,100             | 37,000             |
| Miscellaneous       | 81,841             | 67,050             |
| Perquisites         | 21,525             | 22,500             |
| Special Collections | 66,012             | 52,200             |
| <b>TOTAL INCOME</b> | <b>\$1,629,210</b> | <b>\$1,604,344</b> |

|                        |                    |                    |
|------------------------|--------------------|--------------------|
| <b>Expenses:</b>       |                    |                    |
| Buildings and Grounds  | \$142,411          | \$138,235          |
| St. Ann School         | 175,000            | 175,000            |
| Pastoral Staff         | 139,433            | 177,265            |
| Office Staff           | 199,894            | 154,600            |
| Business Supplies      | 41,991             | 44,900             |
| Benefits/Payroll Taxes | 132,988            | 146,421            |
| Diocesan Assessment    | 136,223            | 145,580            |
| Religious Education    | 48,604             | 56,000             |
| Donations/Tithing      | 81,447             | 65,600             |
| Liturgical Supplies    | 35,836             | 33,850             |
| Music/Choir            | 76,280             | 77,600             |
| Extraordinary Repair   | 66,709             | 25,000             |
| Mortgage               | 153,303            | 153,303            |
| Utilities              | 103,500            | 103,300            |
| <b>OTHER:</b>          |                    |                    |
| Insurances/Taxes       | 31,539             | 32,100             |
| Social/Youth/Volunteer | 15,591             | 13,100             |
| Miscellaneous          | 29,832             | 25,561             |
| <b>TOTAL EXPENSES</b>  | <b>\$1,610,581</b> | <b>\$1,567,415</b> |

N.B. Fiscal Year July 1, 2008-June 30, 2009



## PARISH GIVING

### BISHOP'S ANNUAL APPEAL

Our parish's pledge to the Bishop's Annual Appeal 2009:

Goal : \$85,000  
 Amount Pledged: \$81,753  
 Amount Collected: \$60,523

### DIOCESAN ASSESSMENTS

Saint Ann's share in the cost of operating  
 our great Diocese of Trenton:

\$136,223

### SPECIAL COLLECTIONS

Each year we're asked to contribute to the Church's work in the United States and throughout the world through special collections.

|  |                 |
|--|-----------------|
| Latin America                          | \$2,698         |
| Black and Indian Collection            | 2,634           |
| Holy Land Collection                   | 1,055           |
| Catholic University                    | 1,929           |
| U.S. Bishops' Overseas Relief Fund     | 2,335           |
| Campaign for Human Development         | 2,474           |
| Propagation of the Faith               | 3,477           |
| Religious Retirement                   | 5,959           |
| Catholic Communications                | 1,415           |
| U.S. Home Mission                      | 2,269           |
| Rice Bowl                              | 3,814           |
| Holy Father (Peter's Pence)            | 4,965           |
| Holy Childhood Association             | 2,331           |
| Eastern Europe                         | 500             |
| Southwest Franciscan Missions          | 6,951           |
| Mission Collection - Diocese of Quiche | 9,000           |
| St. Vincent de Paul                    | 10,290          |
| <b>Total</b>                           | <b>\$64,096</b> |

## PARISH TITHING

As a parish community, we take seriously our responsibility to share a generous amount of our treasure with those in need. Our tithing program enables us to support many worthwhile and important causes:

|   |                       |
|---|-----------------------|
| Lawrence Non-Profit Housing                   | \$1,000               |
| Interfaith Caregivers                         | 1,000                 |
| Philadelphia Catholic Worker                  | 200                   |
| San Andrés, Guatemala                         | 8,039                 |
| LHS Project Graduation                        | 150                   |
| Network                                       | 100                   |
| Lawrence Township Neighborhood Service Center | 1,000                 |
| The Center in Asbury Park                     | 500                   |
| Lawrence Road Fire Company                    | 250                   |
| Meals on Wheels                               | 500                   |
| Martin House                                  | 4,000                 |
| Mount Carmel Guild                            | 1,200                 |
| NJ Regional Coalition                         | 500                   |
|   | <b>Total \$18,439</b> |
| <b>Total Parish Giving</b>                    | <b>\$300,511</b>      |

**"I am convinced it is because of our willingness as a parish to tithe, to give from the top of our income that the Lord has blessed us, and will continue to bless our generosity."** Father Vince



The Sheridan family together for Sunday Mass: (left to right) Katie, Kevin, Bridget, Michele, Dan, and Colleen.

## Financial Report for Saint Ann School

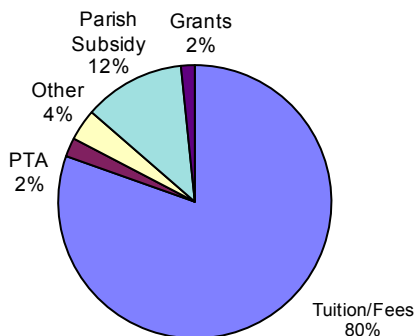
### 2008-2009 Revenue Distribution

|                |                  |
|----------------|------------------|
| Tuition/Fees   | \$1,172,949      |
| PTA            | * 32,500         |
| Grants         | 23,714           |
| Parish Subsidy | 175,000          |
| Other          | 54,369           |
| <b>Total</b>   | <b>1,458,532</b> |
| * estimated    |                  |

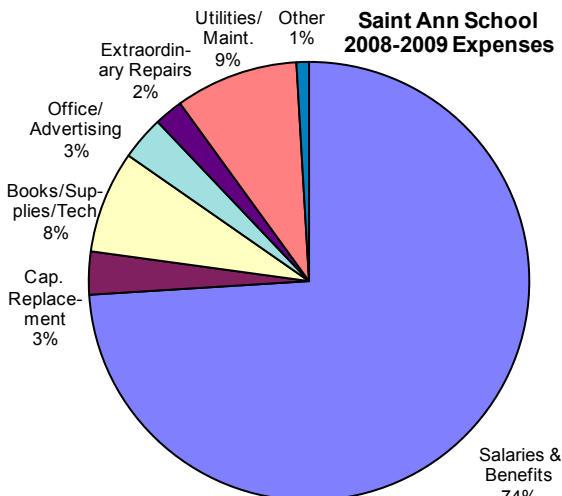
### 2008-2009 Expense Distribution

|                           |                    |
|---------------------------|--------------------|
| Salaries and Benefits     | \$1,021,829        |
| Capital Replacement       | 43,500             |
| Books/Supplies/Technology | 103,701            |
| Office/Advertising        | 44,598             |
| Extraordinary Repair      | 29,049             |
| Utilities/Maintenance     | 125,229            |
| Other                     | 12,707             |
| <b>Total</b>              | <b>\$1,380,613</b> |

**Saint Ann School  
2008-2009 Revenue**



**Saint Ann School  
2008-2009 Expenses**



## LOOK WHAT WE HAVE DONE THIS YEAR!

**FDC** ~ Tinted skylights for sun glare and heat ~ Constructed a handicapped ramp at the side door of FDC Pope John Paul Room ~ Refinished bench in Gallery of Light ~ Installed chair rail in the Community Room and Children's Chapel ~ Painted Children's Chapel ~ Added insulation in confessional ~ Smart Board added to Art Room ~ New Tech Office ~ Movie screen in Community Room ~ AC for Tech Room ~ Connecting hoses run under pavers ~ Rugs cleaned ~ Added new server and firewall ~ Reorganized tech department space ~ Synchronized parish database with the Diocese ~ Upgraded parish and school office PC's to Office 2007 ~ Reorganized servers

**CHURCH** ~ New brick pavers in front of Church ~ Hearing aid devices provided for hearing impaired ~ Koala changing beds installed ~ New cabinet placed in front Sacristy ~ Pew removed ~ Repaired cross on top of church after squirrel damage ~ Updated smoke detection system ~ Added glycol to chiller tower ~ Shelving added in the basement ~ Work table set in C. Haggerty Room ~ New fire alarm system ~ Suggestion box placed in foyer ~ New emergency lights ~ New toilet for old bathroom ~ Rugs cleaned ~ Church lot paving and striping ~

**OTHER** ~ Old convent rented to partner with Center for Peace/Justice ~ New copier for school and FDC office ~ More handicapped parking spaces provided ~ New computer for Parish secretary ~ New pavers at 50 Eldridge ~ Solar assessment of church and school ~ Hired technology consultant for network ~ Website upgraded ~ Donate button added to website ~ Safety Post installed ~ Laptop purchased for Rel. Ed. ~

**PROGRAMS** ~ Held Christmas Carol Festival ~ Prayer Fair ~ Reception volunteer retreat ~ Held Autism Awareness Dinner ~ Hosted water watch teachers ~

**ST. MICHAEL CAMPUS** ~ Gas furnace repaired in Church ~ Emergency light replaced in St. Michael's Hall ~ Storage room renovated ~ Rectory roof repaired ~ Repaired Rectory siding and down spout ~ Religious Education room refurbished in basement ~ Rectory steam boiler replaced in Rectory ~

**SCHOOL** ~ Energy saving lights at School and FDC ~ New bathroom stalls ~ New outlets in Principal's Office and Science Lab ~ Painted several classrooms ~ Replaced ceiling tiles in Principal Office ~ Added Latin Room ~ Paved blacktop ~ Painted games on blacktop ~ New fire alarm system ~ New After School Program door bell and Card reader ~ New water fountain ~ Replaced glass kitchen door ~ Moved PTA closet and ASP closet ~ Repaired stove ~ Upgraded electrical wiring on 2nd floor for fans and Computer Lab ~ Replaced all bulbs on outside of SAS ~ Window screen placed in Gym office ~ New speakers put in Gym (Drama Club) ~ New electric for 1st floor Computer Room ~ Moved classrooms ~ Computer Lab moved to 2nd floor ~ Distance learning enabled with gigabit connection ~ Upstairs classroom fitted with green technology solution ~ Teachers begin using Google Apps. as alternative to Microsoft Office ~

**PTA** ~ New tables and chairs ~ New soccer goals ~ New ceiling fans in classrooms ~

**PROPERTIES** ~ **16 Eldridge**: New heat pump ~ Replaced dryer vent ~ Installed low water cut off ~ Repaired brick wall and steps ~ Replaced storm door ~ **50 Eldridge**: Repaired trim ~ Wireless connection ~ **1255 Lawrenceville Road** : Repaired roof flashing ~ Painted rooms

## FISCAL REVIEW

### OUTLOOK

Your regular Sunday offering continues to be our primary source of income. Basically, it provides the fuel with which we run the parish. Our Sunday collections slightly increased this year and that is good news; however, our number of registered families increased from 3,070 to 3,100, an increase of 30 families. Our **Census Committee** is working hard to make sure that we have an accurate count of actual members of the parish. This will certainly help us in establishing a clearer idea of parishioner participation in the community. Please cooperate with the Census Committee. The stronger we can grow our weekly collection, the more we will be able to accomplish. Identified givers (those who use envelopes or the automatic withdrawal program) are the largest percentage of contributors. They are 21% of our registered parishioners and they contribute 86% of our weekly income. Becoming an identified giver helps us to better serve you, and to quantify your financial contribution to the Church of Saint Ann. **Please use your envelopes regularly.** 49% of those who claim to be parishioners have made no identifiable contribution to our parish this year. Again, please become an *identifiable giver*.

### OUR SAINT ANN SCHOOL

Our Saint Ann School is one of our primary parish ministries and represents a large share of our disbursements. (We have included a copy of the School Report.) School enrollment continues to decline. With an enrollment of 280, our school is at 63% capacity. Increasing enrollment is a major challenge for all of us. The **School Marketing Committee** continues to do a great job in presenting the good news of our school to the public; however, word of mouth will always be the greatest encouragement for families to enroll their children. Visit our school; tell your family and friends and neighbors about this great treasure right in our own back yard.

### CHURCH OPERATION

We continue, through our **Building and Grounds Committee**, to maintain and improve our six properties here in Lawrenceville, and the two properties at our Saint Michael Campus. Preventive maintenance is certainly the most cost effective way of keeping these properties in good working order. The **LOOK WHAT WE'VE DONE THIS YEAR!** section of this report will help you see how we have been tending to immediate needs, as well as preventive maintenance. We will carefully monitor our income this year so we can expand our preventive maintenance without straining our ordinary operating budget.

### PARISH MINISTRIES

Our parish ministries continue to expand as we discover more ways to respond to our mission as a parish. Although the volunteers who serve in these wonderful and diverse ministries provide the backbone of what gets done, each ministry requires support of both personnel and financial resources. Balancing this distribution is a challenging task made easier by your generosity in the Sunday collection.

### FAITH DEVELOPMENT CENTER

Although it is hard sometimes to imagine how we survived without our Faith Development Center, we continue to grow in our understanding of how to best use this great gift to better serve the community. As initial warranties begin to expire, we find ourselves in need of extended service contracts and additional caretaking responsibilities. We are grateful to those who make contributions to our Faith Development Center, and to the Annual Golf Tournament that contributes substantially to this effort. This building is a source of great pride for our parish, and we need to be good caretakers of this gift.

### GOOD STEWARDSHIP

Stewardship is a great responsibility for all of us who are a part of this Church of Saint Ann. It involves serious commitment to use well the gifts of time, and talent, and treasure that are given so freely to our community. Each and every parishioner has a responsibility to be a good steward, and to examine their personal stewardship of time, treasure, and talent very carefully. The Saint Ann Green Committee is a new initiative to help the parish be better stewards of our environment. Each October, we set aside the

month to challenge all to reflect on their financial giving to our parish, and to take the time to examine their personal financial situation, as well as their regular giving to the parish. In hard economic times, this type of examination is critical. Generosity, in a time of financial crisis, is countercultural. It helps us move from our self-interest to focus on the common good. Our parish, and what we can do, rely heavily on the support that is given by **ALL** of our members. We ask those who have not been helping with their financial gifts, and are now able to do so, to make a commitment this year. It can make a real difference in what we, as a parish community, are able to do.

### MORTGAGE

Like most parishioners, we carry a debt. Before we began building our Faith Development Center, we determined that we would be able to manage that debt without affecting the vitality and mission of our parish. Thanks to your continued generosity, this has been the case. Our mortgage represents about 10% of our yearly expenses. We are committed to continuing to keep this balance while decreasing the principal (\$1,841,440) as of September 1, 2009) whenever possible. This year, we have been able to pay \$48,669 toward reducing the principal.

### FUTURE EXPENSES

Last year, we were able to chip away at some of our future expenses as we carpeted the Church, replaced the padding and upholstery of the pews, improved the sound system, renovated the bathrooms, and replaced the rectory boiler at our Saint Michael Campus. Our Future Project List still contains: enhancing our tabernacle area, providing better storage space for Church, completing the Reception Hall and Kitchen of the Faith Development Center, replacing the Church boiler, repaving the parking lot, and restoring statues at our Saint Michael Campus. We will move ahead on these projects as funds become available.

### VOLUNTEER CONTRIBUTIONS

The vibrancy of our parish is dependent on, and a tribute to, the many disciples - well over 800 - who voluntarily give of their time and talents to help us accomplish our mission. They make the Church of Saint Ann the great community that it is, and all should be grateful for their generous service. This represents a tremendous savings to our parish. Not to mention this contribution in any financial report is to ignore a very significant aspect of what we are able to accomplish. We are certainly dependent on our volunteer disciples for much of what we are able to do and to be.

### MEMORIAL DONATIONS

Each year in our Pastoral and Financial Report, we acknowledge financial gifts given to the parish in memory of deceased friends and loved ones. Not only does this represent a generous contribution to our financial picture, it also provides a great way for many people, who have given so generously of their time and talent to this parish during their life, to continue to assist this community. We continue to count on their prayers and support of all we are and all we do.



Sue Douglas, Bill Wnek, and Russ Scofield are ready to serve our guests at the Cathedral Soup Kitchen.

# MEMORIAL DONATIONS

*The Church of Saint Ann, Lawrenceville, New Jersey*

**July 1, 2008 through June 30, 2009**

We are grateful for those who have made donations to our School, Church, and Faith Development Center as a way of remembering deceased loved ones.

## **MARIE MESEROLL** (July 1, 2008)

Mr. and Mrs. Peter R. Blake, Jr.  
Mr. and Mrs. William Dalton  
Mr. and Mrs. George Gagliardi  
Patricia P. Hickerson  
John Keaney  
Mrs. Dale Williams

## **NATALIE CAPIK** (July 8, 2008)

Barbara and Brian Bowers  
Jamie and Dawn Herzog

## **JANE FALLON** (July 31, 2008)

Mr. and Mrs. William Dalton  
Mrs. Dale Williams

## **PETRINA SERGE** (August 1, 2008)

Mr. and Mrs. Steven R. Czigler

## **MICHAEL P. FRANKO** (August 6, 2008)

Mr. and Mrs. Pasquale Adesso  
Dr. Lawrence and Phyllis Baker  
Mr. Simon Belli  
Mary Butler  
Rose C. Cohen  
Mr. and Mrs. Charles Connell  
George and Marie Conover  
Jacqueline Cottone  
Dr. and Mrs. F. John Cottone  
The Dalton Family  
Gary and Judy Danback  
Clifford and Ann Marie Dickens  
Mr. and Mrs. Michael S. Feit  
David and Marilyn Friedman  
Mr. and Mrs. George Gagliardi  
Mr. Joseph Gavenda  
Mr. Thomas Giraldi  
Dr. and Mrs. Arnold Gordon  
Green Acres Country Club  
Dale and Jeanne Haller  
Doris Harcar  
Edward and Patricia Krupa  
Eleanor D. Kuhn  
Dr. R. A. Martens  
Roger and Anne McManimon  
Mr. and Mrs. Robert D. Mitzel  
Jerome and Barbara Montana  
Helen C. Oslovich  
Robert A. Ross  
Ms. Karen Siracusa  
Richard and Regina Swords  
Margaret F. Vasily  
Cindy and Zig Zegarski  
Mr. and Mrs. Albert Zeyack

## **SAMUEL A. EMMA** (October 3, 2008)

Ms. Frances Brooks  
Ms. Rosemary A. Calcese  
Mrs. Cynthia Carter

Mr. Charles W. Crate  
Mr. and Mrs. Michael F. DiBella  
Ms. Grace Earl  
Mr. and Mrs. George W. Ehrmann  
Mr. and Mrs. Juan M. Gonzalez  
Mr. and Mrs. Paul H. Ionata  
Kennnections Hair Concepts  
Mr. and Mrs. Charles M. Koenig  
Ms. Carlyn E. Kolb  
Mr. and Mrs. Ronald E. Kraemer  
Ms. Elsie M. Kennedy  
Mr. and Mrs. Nicholas J. Matteo  
Mr. and Mrs. Charles E. McMichael  
Ms. Gail L. Morganti  
Mr. and Mrs. Charles M. Moscarello  
Mr. and Mrs. Michael S. Moscarello  
Mr. and Mrs. Robert J. Nickels  
Ms. Rose L. Pelicano  
Ms. Patricia A. Romanowsky  
Mr. and Mrs. John C. Rose  
Mr. and Mrs. Jorge Sare  
Ms. Rosemary Schafer  
Mrs. Lois P. Summers  
Mr. and Mrs. James R. Tantum  
Antoinette and J. David Tregurtha  
Mrs. Deana M. Napoleon-Wells

## **CATHERINE HAGGERTY** (October 22, 2008)

Mr. and Mrs. Pasquale Adesso  
Ms. Florence A. Barrett  
Ms. Edith Chudik  
Mrs. Irene Y. Cottone  
Mrs. Margaret A. Kite  
Mrs. Sally Kuser Lane  
Mr. Charles L. Leonard  
Mr. Stanley R. Haines

## **JOSEPH LEONIC** (October 24, 2008)

Mr. and Mrs. Pasquale Adesso  
Mr. and Mrs. Anthony B. Zulla

## **MARIE KOVACZ** (October 29, 2008)

Mr. and Mrs. Robert M. Haltmeier

## **MARY ELLEN GALATI** (November 7, 2008)

Mr. and Mrs. Anthony F. Capriotti  
Mr. and Mrs. Donald Craver  
Ms. Lucille Erkoboni

## **JOHN WYLLIE** (November 30, 2008)

Lorraine L. Colavita

## **RICHARD JOSEPH MIKOVSKY** (Dec. 6, 2008)

Ms. Mary M. Kerlin

## **D. DONALD BELVISO** (December 7, 2008)

Ms. Phyllis M. Amodio  
Ms. Rosa Amodio

Angelina G. Barnila  
Mr. and Mrs. Joseph Battista  
Mr. and Mrs. Don P. Belviso  
Mr. and Mrs. Edward S. Bogacz  
Ms. Mary I. Boshanski  
Ms. Ada H. Cattani  
Mr. and Mrs. Donald N. Chiacchio  
Mr. and Mrs. Frank V. Cuiule  
Mr. Vincent Cuiule  
Mr. and Mrs. Michael C. Curcio  
Mr. and Mrs. Giacinto B. Dagostino  
Mr. and Mrs. Daniel J. Dziura  
Dr. and Mrs. Edward F. Flood  
Mrs. Lena Galletti  
Ms. Orsola Gervasio  
Ms. Virginia L. Gervasio  
Mr. and Mrs. James C. Hedden  
Mrs. Anna Kushner Family  
Mrs. Irene T. Mando  
Mrs. Jennie Martillotti and Family  
Ms. Grace Mazzatelli  
Mr. Maurice T. Perilli  
Ms. Joyce J. Persico  
Mr. and Mrs. Thomas Petroni  
Mr. and Mrs. Raymond Pinelli  
Mrs. Betty Rossi  
Ms. Lola F. Rossi  
Saint Ann Adult Choir  
Ms. Lena M. Salvatore  
Ms. Helen Sciarabone  
Mr. Gerald R. Stockman  
Ms. Barbara Strano  
The Tafrow Family  
Mr. and Mrs. Robert L. Toth  
Ms. Bridget R. Zotta

**EILEEN MEAGHER** (January 13, 2009)

Pat and Gladys Adesso  
Timothy and Mary Elizabeth Babcock  
Marie A. Cook  
Hugh and Bernice Devine  
Peter and Janet Emanuel  
Carol Koncsol  
Robert Mahon  
Eric and Anine Rusecky  
Thomas Stallings  
Robert and Patricia Toole  
Robert and Pauline Toth

**KATHRYN CHIHON** (February 8, 2009)

June L. Albanowski  
Brenda Hillman and ACP and GI Unit Staff  
Margaret Kite  
Mrs. Alice Leone  
Irene T. Mando  
Mr. and Mrs. Michael Swiatocha  
Mr. and Mrs. Norman E. Wall

**MARILYN APELIAN** (March 11, 2009)

Dr. Archie and Mrs. Rosemary Bell  
Mike Corbo  
Mr. and Mrs. Edward Galick  
Mr. and Mrs. Frank A. Hunnicutt, III  
A. L. Moore  
Pennington Dental Associates, LLC  
Betty R. Reep and Children: Ron Williams, Linda Riffel,  
Don Reep, and Janet Terjak

Reynolds and Drake, P.C.  
Mr. and Mrs. Marvin Skinner, Mr. Greg Skinner, and  
Ms. Kathleen Lockhart  
Mr. Rudolph A. Socey, Jr., P.C.  
Mr. and Mrs. Steven W. Sparks  
Mr. Howard Spencer  
Stahl and DeLaurentis, P.C.  
Mr. Robert G. Stevens  
TCNJ Library  
Mr. and Mrs. Mark Timmons  
Ms. Jessica M. Vance

**MARY BEKARCIAK** (April 26, 2009)

Mr. and Mrs. Theodore P. Bucon  
Mr. Bert F. Carr  
Mr. and Mrs. David Easton  
Mr. and Mrs. Robert Forczek  
Mrs. Sally Kuser Lane  
Ms. Mary Ann Maleski  
Mr. and Mrs. Frank T. Maurio  
Mr. and Mrs. Mario Musso  
Ms. Mary C. Pelc  
Mr. and Mrs. Thaddeus P. Robak  
Edmund and Randall Stoy  
Keun Won Suh

**CAROL ANN MOORE** (May 7, 2009)

Wesley Mingin (Trenton Teachers)  
Dawn M. Simpson and Donovan D. Klotzbeacher  
Kay Wiley

**FRANK SCHIAVONE** (June 29, 2009)

Dr. and Mrs. Marc Abo  
Dorothy Bailey  
Linda J. Bishop and Suzanne M. Wirth  
Mr. and Mrs. Adam S. Bloom  
Ron and Deborah Corey  
Anne E. Davison  
Mrs. Marie Emma  
Mr. and Mrs. Salvatore A. Emma  
Dr. and Mrs. Patrick Inverso  
Mr. and Mrs. Robert Major  
Edward and Gail McElroy  
Edward Moriarity  
Joel and Rosemarie Rosenberg  
Carrol and Nancy Schiavone  
Mr. and Mrs. James Wilkin

**GUATEMALAN PROJECT**

**MICHELE M. GIULIANO**  
*by CHDI Management Firm*

**ANNUAL MEMORIAL DONATIONS**

**JEANNE G. BELLI**  
*by Mr. Simon Belli*

