

Drop off Highlights [as of 9/4/20]:

- Drop off is from 7:40am – 7:55am.
- There are 3 Drop off points, indicated by A/B/C on the map. If you have multiple children, you may have to make 2 or 3 stops depending on their grades. The flow is A to B to C if you have multiple.
 - A: 4th– 8th graders
 - B: 3K
 - C: 4K – 3rd graders (If you need to assist your child with exiting the car, park in the light green shaded area and walk them to the door)
- ENTRY is through the St. James Lane entrance for EVERYONE
 - To avoid backups onto Mequon Rd, cars with “A” drops will head north on Bobolink to Chestnut to St. James
 - Cars with “B” or “C” drops (including assisted parking) will enter on Bobolink and turn right on St. James
- If you have “A” drop
 - Enter the gym parking lot and drive down the far left (north) lane to the gym door.
 - If you do not have a 3K student, exit using the center lane.
 - Cars with a 3K student, continue to the far south lane and park along the building. Walk 3K student to door (“B” on the map). Exit west and follow the remaining flow.
 - If you do not have a “C “ drop, use the “Pass” lane to exit.
- If you have a “B” or “C” drop
 - “B” (3K): head to the 3K drop off area. Walk 3K student to door. Exit west and follow remaining flow.
 - “C”: Use the inside lane in front of the Office to drop off 4K – 3rd graders at the Office door.

*Do not stop in the yellow highlighted area. Incoming cars should yield to cars exiting the gym parking lot.
Drive slowly and please avoid cell phone use.*

DROP OFF
7:40-7:55 AM



Chestnut Rd

ENTER HERE

(A drops)

[no exit]

A drop

exit using center lane

B&C drop

3K

3K park

A **A: Drop off 4th – 8th**
at Gym

B **B: Drop off 3K**
at 3K Doors

C **C: Drop off 4K – 3rd**
at School OfficeC

No Parking

XXXX
No Cars

NO parking

D
BUS
Parking

(B& C drops)

Park
&
Walk

Pass Lane (to exit)

Church

No Entry

No Entry

Bobolink Ln

ENTER HERE

MEQUON ROAD



Range Line Rd

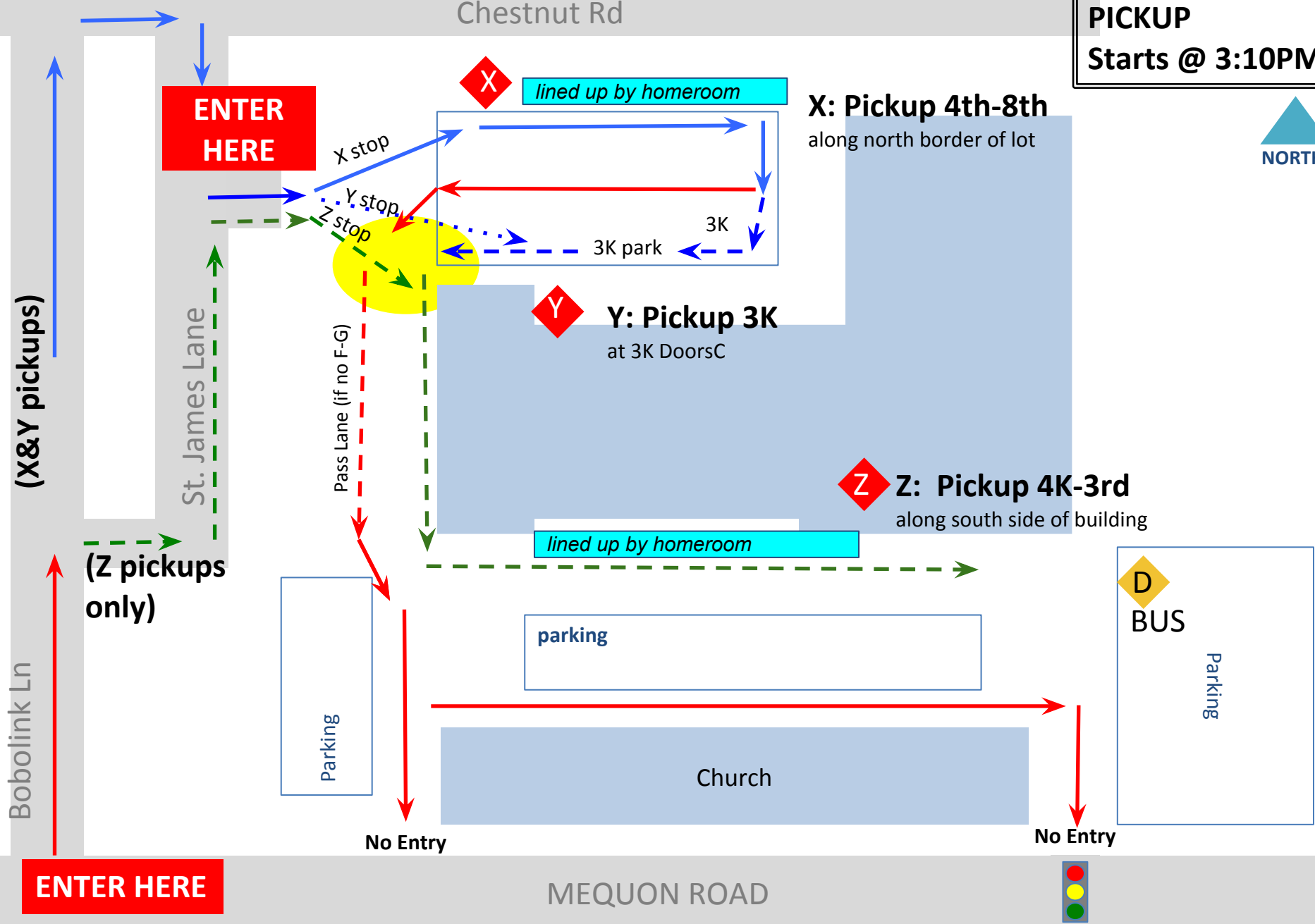
Pickup Highlights [as of 9/14/20]:

- *Pickup will be similar to drop off ; you will pickup student(s) by grade.*
- Pickup starts at **3:10pm**. Please arrive at **3:10pm** to avoid congestion in the neighborhood.
- There are 3 pickup points, indicated by X/Y/Z on the map. If you have multiple children, you may have to make 2 - 3 stops depending on their grades. The flow is X to Y to Z if you have multiple.
 - X: 4th – 8th graders
 - Y: 3K
 - Z: 5K - 3rd graders
- ENTRY is through the St. James Lane entrance for EVERYONE
 - To avoid backups onto Mequon Rd, cars with X and/or Y pickups will head north on Bobolink to Chestnut to St. James
 - Cars with only Z pickups will enter on Bobolink and turn right on St. James
- If you want to park and walk to pickup your 4K-3rd grader, you will need to follow the traffic pattern into campus and park between the school and church buildings. Wait in your car and your child will be released once the car pickup line has finished.

Be careful in the yellow highlighted area as there is cross traffic. Incoming cars should yield to cars exiting the gym parking lot. Drive slowly and please avoid cell phone use.

Please be respectful of our neighbors, drive slowly, and do not block their driveways.

PICKUP
Starts @ 3:10PM



Range Line Rd

Half Day Pickup [as of 8/21/20]:

- 3K Half Day pickup will be at 11:20am at the School Office
- 4K Half Day pickup will be at 11:30 at the School Office
- Stay in your car and your child will be brought to your car
- If you need to park and buckle, pull forward to the parking lot

