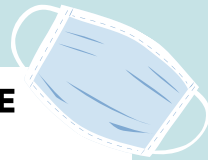


# Mass Guideline Update

June 2021

## WHAT'S *changed*



✓ **MASKS ARE OPTIONAL FOR THOSE WHO ARE VACCINATED**

✓ **CAPACITY RESTRICTIONS ARE LIFTED**

however, a section must be designated that requires masks and social distancing for those who feel more comfortable continuing those practices

✓ **CHOIRS MAY RESUME & HYMNALS MAY BE RETURNED TO PEWS FOR USE**

if space allows for social distancing

✓ **BULLETIN DISTRIBUTION MAY RESUME**

✓ **UP TO 3 ALTAR SERVERS MAY ASSIST**

✓ **INDOOR AND OUTDOOR PARISH ACTIVITIES MAY RESUME**

in adherence to current State guidelines

## WHAT'S *the same*

✓ **CLERGY AND EUCHARISTIC MINISTERS ARE TO BE MASKED WHILE DISTRIBUTING COMMUNION**

✓ **ENCLOSED CONFESSIONALS MAY ONLY BE USED IF PROPER VENTILATION IS POSSIBLE**



✓ **CRY ROOMS AND NURSERIES REMAIN CLOSED**

✓ **CLEANING AND SAFETY PROTOCOLS (HAND WASHING/SANITIZING) MUST BE FOLLOWED**



✓ **INDOOR AND OUTDOOR GATHERINGS ARE SUBJECT TO THE CAPACITY LIMITS SET BY THE STATE (MDHHS).**

For full guidelines and updates, visit [diokzoo.org/public-return-to-mass](http://diokzoo.org/public-return-to-mass)

