

# Good Shepherd Catholic Church

## PASTORAL STAFF

Rev. Lawrence J. Esposito, **Pastor**  
Rev. Victor Sierra, **Associate Pastor**  
Marc E. Gervais, **Deacon**  
Maureen E. Briand, **Administrative Assistant**  
Carol A. Zabinski, **Director of Music**  
**Ministry to Children and Youth**  
Donna Wilson,  
**Administrator of Religious Education**

## Parish Office

508-234-7726 • Fax: 508-234-0964  
Monday - Thursday: 9:00AM-3:00 PM  
Friday: 9:00 AM-12:00 PM  
Parish e-mail: [gshepherd7726@charter.net](mailto:gshepherd7726@charter.net)  
[www.goodshepherdlinwood.org](http://www.goodshepherdlinwood.org)  
Religious Education 508-234-5340  
Religious Education Office Hours: Monday 2:30-8:00 PM

## LITURGY SCHEDULE

### **Weekends**

Saturday: 4:00 PM  
Sunday: 8:00 AM, 10:00 AM

### **Daily**

Mass (M, T, Th, F): 8:45 AM

### **Sacrament of Reconciliation:**

Saturday 2:45-3:30 PM  
(At St. Augustine 3:15-4 PM)

### **Holy Day Masses:**

As announced

## SACRAMENTS

**Baptisms:** Please contact the parish office to schedule date of preparation and date of baptism.

**Marriage:** Please contact the pastor at least one year before planned date of marriage.

**Visitation or Anointing of the Sick:** Anytime. Please contact the pastor.

If you are a visitor or if you are new to our parish, we welcome you. If you would like to become a member of our parish, you may call the parish office, contact us by e-mail or return this form by mail or by placing it in the offertory collection.

This form may also be used for change of address or to request a call from a member of our staff.

Name \_\_\_\_\_

Address \_\_\_\_\_

Telephone # \_\_\_\_\_

## Linwood/Uxbridge, Massachusetts

 **Mass Intentions  
for the Week**

- Saturday, September 29**  
**4:00 PM** Jessica Monahan by her grandmother Cecile
- Sunday, September 30**  
**8:00 AM** Jeannette Belanger  
 by Bruce & Christine Bartlett  
**10:00 AM** Donald Ritchie (1st. Anniv.) by wife & family
- Monday, October 1**  
**8:45 AM** Lorraine Lussier by Joyce Paquette  
**11:00 AM** Crown & Eagle, Linda Poudrier by Cecile
- Tuesday, October 2**  
**8:45 AM** Holy Souls in Purgatory by the Helpers of the Holy Souls
- Thursday, October 4**  
**8:45 AM** Marie & Adelard Ouillette & Theresa Benjamin  
 by their family
- Friday, October 5**  
**8:45 AM** Lucienne Roy by her son Don Roy and daughter Lise Lithcum
- Saturday, October 6**  
**4:00 PM** Sam Cogliandro by his family
- Sunday, October 7**  
**8:00 AM** Eleanor Gonsorcik by her family  
**10:00 AM** Sadie Grace Pomeroy by her family

**Liturgical Roles October 6 & 7**

**Extraordinary Ministers of Holy Communion**

- 4:00 PM** M. Destremes, M. Joanis  
**8:00 AM** J. Paquette, J. Petty  
**10:00 AM** C. Guertin, L. Roberts

**Lectors**

- 4:00 PM** J. Hauge  
**8:00 AM** M. O'Sullivan  
**10:00 AM** L. Kalinoski, T. Millette

**Altar Servers**

- 4:00 PM** D. Rousseau  
**8:00 AM** J. & M. Lowrey  
**10:00 AM** M. & S. Kay

**Ushers**

- 4:00 PM** K. & J. Nutter  
**8:00 AM** J. D'Alfonso, E. Metivier  
**10:00 AM** D. & MB Guertin

**Readings for the Week of September 30, 2018**

- Sunday: Nm 11:25-29/Ps 19:8, 10, 12-13, 14 [9a]/  
 Jas 5:1-6/Mk 9:38-43, 45, 47-48
- Monday: Jb 1:6-22/Ps 17:1bcd, 2-3, 6-7 [6]/Lk 9:46-50
- Tuesday: Jb 3:1-3, 11-17, 20-23/Ps 88:2-3, 4-5, 6, 7-8 [3]/  
 Mt 18:1-5, 10
- Wednesday: Jb 9:1-12, 14-16/Ps 88:10bc-11, 12-13, 14-15  
 [3]/Lk 9:57-62
- Thursday: Jb 19:21-27/Ps 27:7-8a, 8b-9abc, 13-14 [13]/  
 Lk 10:1-12
- Friday: Jb 38:1, 12-21; 40:3-5/Ps 139:1-3, 7-8, 9-10,  
 13-14ab [24b]/Lk 10:13-16
- Saturday: Jb 42:1-3, 5-6, 12-17/Ps 119:66, 71, 75, 91, 125, 130  
 [135]/Lk 10:17-24
- Next Sunday: Gn 2:18-24/Ps 128:1-2, 3, 4-5, 6 [cf. 5]/Heb 2:9-11/  
 Mk 10:2-16 or 10:2-12

 **CALENDAR**

Sunday, September 30	9:00 AM	SP RE (Parish Hall)
	11:00 AM	Gr. K, 1,3,4,5 (Parish Center)
	4:00 PM	Gr. 2 RE <b>@ St. Augustine</b>
	6:00 AM	Confirmation I & II (Parish Center)
Monday, October 1	11:00 AM	Mass @ Crown & Eagle
	5:30 PM	YC Open
	6:15 PM	Gr. 6-8 (Parish Center)
Tuesday, October 2	6:00 PM	TOPS (St. John Paul II Rm.)
Wednesday, October 3	6:30 PM	Boy Scouts (2nd fl. Parish Center)
Thursday, October 4	6:30 PM	Holiday Fair Mtg. (St. John Paul II room)
	7:00 PM	Bible Study (Senior Room)
Friday, October 5	9:15 AM	First Friday Adoration (Mary Chapel)
Saturday, October 6	7:30 AM	Men's Breakfast (Parish Hall)
	2:00 PM	Bible Study (Senior Room)
	2:45 PM	Confessions
Sunday, October 7	9:00 AM	<b>NO</b>
	11:00 AM	<b>RELIGIOUS ED.</b>

**LITTLE LAMBS**

Our Little Lambs program will temporarily be on hiatus for the rest of this year. Unfortunately, due to the lack of active participants by families with preschoolers, we will let the program take a break.



**First Friday Adoration of the Blessed Sacrament**  
 will be October 5 at 9:15 AM in the Mary Chapel.

**A MINI RETREAT FOR WOMEN**

The Commission for Women of the Diocese of Worcester invites you to join us for a Mini Retreat for Women on **Saturday, October 20 at St. Mary's Parish Hall, Main Street, Shrewsbury, MA.** The day will begin with Mass at 8:30 AM, followed by registration and coffee/pastries. Lunch will be included with the \$15 offering, and the program will conclude by 1:30 PM. Our facilitator will be Jaymie Stuart Wolfe, a featured speaker at numerous spiritual events, conferences and retreats throughout the Archdiocese of Boston and beyond. She combines inspirational music with spoken reflection, and has produced numerous recordings of original music. The program will leave you with a stronger sense of who God is and how He wants to be in your life, and who you are and can be in Him and for each other. The registration fee (checks made payable to Commission of Women) can be mailed to Pamela Ashmankas, 5 Millbury Terrace, Millbury, MA 01527 by October 11. Further information and registration form may be found at [www.worcesterdiocese.org/commission-for-women](http://www.worcesterdiocese.org/commission-for-women).

**Sunday, September 30**

SP RE	9:00 AM
Grades K,1,3,4,5	11:00 AM
Grade 2	4:00 PM @ St. Augustine
Conf. I & II	6:00 PM

**Monday, October 1**

Grades 6-8	6:15 PM
------------	---------

**26th Sunday in Ordinary Time**

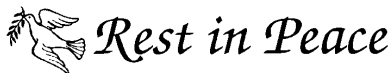
As we go about our days, we necessarily label, classify, and prioritize. What's "in" and what's "out" on our priority list? Because humans are social beings, we tend to do the same thing with people. We can only invite six people to the dinner party. Our young child wants to invite certain friends to her birthday, but we're keenly aware of who the parents are, and the prospect of spending several hours with them is enough to give us pause.

In today's Gospel, Jesus' disciples face a classification problem.

They've seen another person driving out demons in the name of Jesus. They recognize him, a non-Apostle, as clearly "out." And yet "Jesus replied, 'Do not prevent him whoever is not against us is for us.'" Jesus recognizes real faith in the would-be exorcist. In our own lives, Jesus invites us to recognize others' good intentions. They should not be cut off simply because they do not line up with all our personal preferences. What, then, is deserving of such a fate?

"If your hand causes you to sin, cut it off, if your eye causes you to sin, pluck it out."

When his listeners blame others, Jesus tends to pivot the conversation to their own lives. In this case, the message is clear. What we really need to cut out is that which keeps us from Jesus. If over-commitment causes us to lose patience with our family, doubt God's providence, and become consumed with self-reliance, cut something out. If certain friendships lead us time after time into gossip and slander, cut it out. In today's Gospel, Jesus invites us to live intentionally in our discipleship. Are we ready?



In the charity of your prayers, please remember the soul of **Walter Clement** who has gone home to God. May he rest in Christ's eternal light and peace.

**SHARING OUR BLESSINGS**  
**Weekend of September 22 & 23**  
**Weekly Goal \$5959**

Sunday Regular \$3119; Electronic \$425; Candles \$45  
 St. Augustine reimbursement \$2782;  
 Holiday Fair Meat Pies \$40

**Other Income \$0**

Number of Envelopes: 82 Thank You

*(The participation of all is very important  
 and is appreciated by the whole community)*

**Prime Time**

**Free** Wednesday afterschool program at the United Presbyterian Church from 2:45-5:30 PM! We are still looking for teachers/aides or people to come in once or twice and teach the children a craft, a cookie recipe or what have you. We would also love to have some folks to greet the parents at pick up and to monitor the entrance to the church. Donations of graham crackers, goldfish crackers, saltines, fruit (canned or fresh), carrots, etc. are also always appreciated. If you think you can help in any way, please contact **Gaye Shannon at 508-320-5723** or [www.whitinpres.org/primetime](http://www.whitinpres.org/primetime).

**Grieving with Great Hope**  
**Grief Support Workshop**

Grieving with Great HOPE is a five week grief support workshop series that offers a prayerful, practical and personal approach for anyone who is mourning the loss of a loved one. If you have lost a spouse, a child (including pregnancy loss), a grandchild, a parent, another family member or a friend, no matter when, you are encouraged to attend. Everyone experiences loss in their own unique way. Everyone will gather together as a community of faith and journey to become disciples of hope. The workshop will be facilitated by Linda Small, LICSW and Lynn Normandin. The workshop will consist of both video presentations and discussions. This program comes from Good Mourning Ministry, a Catholic bereavement apostolate. **Advanced registration by October 2 is \$15, after is \$20. Meeting dates are October 11,18,25, November 8, 15 from 6:30-8:30 PM at St. Mary's Church, Uxbridge in the parish hall. Please call the office at 508-278-2226 for more details or email [dmoriarty@stmaryuxbridge.org](mailto:dmoriarty@stmaryuxbridge.org).**

**Crop Hunger Walk** will be held on Saturday, **October 20 at 9:00 am. Registration begins at 8:30 am at the Trinity Episcopal Church, 33 Linwood Ave., Whitinsville, next to the Whitinsville Common.** The walk is 3 miles starting at the Trinity Church and walking to the Uxbridge Congregational Church, next to the Uxbridge Common. Refreshments will be served at the end of the walk at the Community House, next to the Uxbridge Congregational Church.

In many developing nations, people walk as many as six miles a day to get food and water. We walk because they walk. Together we can make a difference in someone's life.

**Notre Dame Academy's Open House** for prospective students will be held on **Sunday, October 21 from 2-4 pm.** Students currently in fifth, sixth, seventh and eighth grade are encouraged to attend. Pre-registration is encouraged for the Open House. If you are interested in attending NDA's Open House or spending an academic day at NDA, please contact their Office of Admissions at **508-757-6200, ext. 229** or email [admissions@nda-worc.org](mailto:admissions@nda-worc.org). NDA is the only Catholic private and independent college preparatory school for young girls in grades 7-12 in Central Massachusetts. Please visit their website at [www.nda-worc.org](http://www.nda-worc.org) to learn more about the NDA experience.

**Saint Peter Marian Junior-Senior High School**

**(SPM)** welcomes prospective students and families to meet current students, parents, faculty, staff and coaches on **Sunday, October 28, from 1:00-3:30 PM.** SPM is a Catholic Diocesan school educating young men and women since 1976 in the Roman Catholic tradition. The campus is located at 781 Grove Street, Worcester. Families can pre-register for the Open House by calling **508-852-5555, x114** or **online at <http://spmguardians.org>.**

**WICKSTROM MORSE**  
COUNSELORS AT LAW

6 Court St. • Uxbridge  
508-278-4500  
60 Church St. • Whitinsville  
508-234-4551  
wickstrommorse.com



331 Main St. / Milford, MA 01757  
**SALES | SERVICE | PARTS**  
www.franksappliance.com  
508-473-1309  
508-634-8854

**Buma**

Funeral Homes  
508-278-2755  
Uxbridge  
Whitinsville  
www.bumafuneralhome.com

**Tancrell Jackman**  
Funeral Homes

Uxbridge  
Whitinsville-Douglas  
Gerald E. Jackman  
**(508) 278-2200**  
www.jackmanfuneralhomes.com

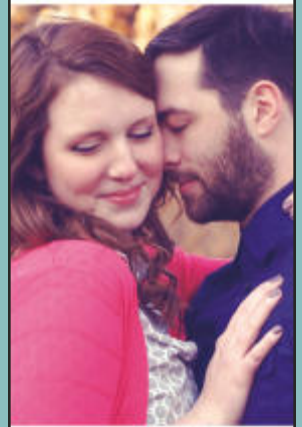
**CARR** Funeral Home

FAMILY OWNED & OPERATED  
SINCE 1850  
Douglas S. Carr, Jr. & Heather Carr-Reiter  
24 Hill Street | (508) 234-2330  
www.carrfuneralhome.com

Good Counsel  
Tax Services  
Tax & Financial Services

100 Main St., Ste. 104  
Whitinsville, MA 01588  
(508) 278-7600

catholicmatch®  
Massachusetts



CatholicMatch.com/MA

**BLISS**  
AUTOMOTIVE  
Foreign & Domestic  
Auto Repair

Jared Bliss  
508-278-6400  
110 South Main St., Uxbridge



All Phases of Carpentry  
New Construction - Garages  
Additions - Basements - Kitchens  
Bathrooms - Decks - And More!  
508-476-7095  
DonsCarpentryMA.com

St. Camillus  
Health Center  
447 Hill Street  
(508) 234-7306

Short Term Rehab, Long Term Care,  
Respite Stays; The only Non-Profit  
Nursing Home in the Valley  
Exceptional Food, Nursing,  
Rehab, and Recreation

"The  
Lydia Taft  
House"

A Rehabilitation &  
Skilled Nursing Community.  
60 Quaker Highway,  
Uxbridge, MA  
1 (508) 278-9500



508-234-8009

www.SalmonHealth.com

St. Camillus Adult  
Day Health Center  
670 Linwood Avenue  
(508) 266-2054

Unbeatable views; outdoor patio  
located on the Mumford River;  
Transportation Available; Strength  
and Balance Training program;  
High Quality food, Nursing Care,  
and Recreation programming  
www.stcamillus.com



**WE'RE HIRING**  
AD SALES EXECUTIVES



- Full Time Position with Benefits
- Sales Experience Preferred
- Paid Training
- Overnight Travel Required
- Expense Reimbursement

CONTACT US AT  
careers@4LPi.com • www.4LPi.com/careers

Darling's Well  
& Pump

Uxbridge  
(508) 278-3590  
24 Hour Emergency  
Service

PROTECTING SENIORS NATIONWIDE  
MEDICAL ALERT SYSTEM

**\$29.95/MO**  
BILLED  
QUARTERLY

PLUS  
SPECIAL  
OFFER

CALL NOW!  
1.877.801.7772  
WWW.24-7MEDALARM.COM

**HELP PROTECT  
YOUR FAMILY & HOME**

CALL NOW!  
1-888-862-6429



AVAILABLE  
FOR A LIMITED TIME

ADVERTISE YOUR  
**BUSINESS HERE**

Contact **Richard Betro** to place an ad today!  
rbetro@4LPi.com or (800) 477-4574 x6288

**COVE**

INSURANCE  
AGENCY, INC.  
All Forms of Insurance

278-5544  
9 North Main  
(Next to the Public Library)  
Uxbridge, MA