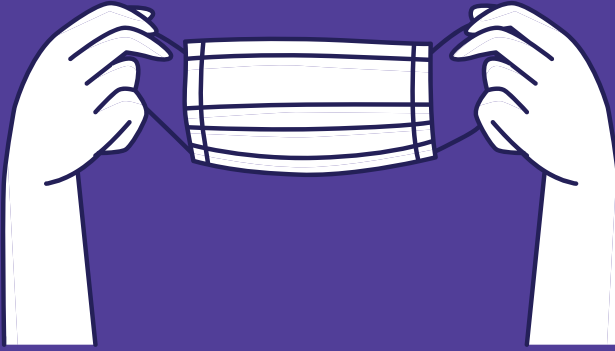


# COVID-19

## *Guidance for the Return to School 2021/2022*



- ✓ **UNIFORMS:** We are back to regular school uniforms. On PE days students should wear their gym uniforms to school
- ✓ **MASKS:** All are required to wear masks inside the school building, this is a state mandate and as such required legally. Students will be able to remove masks when outdoors
- ✓ **DESKS SHIELDS:** Will be placed on desks in all rooms that eat a snack in the classroom
- ✓ **MORNING GENESIS & TEMPERATURE:** This year we are starting out without the morning Genesis check-in, however, it may return depending on circumstances regarding cases at the school and local district level

✓ **SYMPTOMS:** Any students with symptoms should be kept home. If a the child is experiencing symptoms in school they will be sent to the isolation room and not be allowed back to school until they produce a negative test taken 3-5 days AFTER the symptoms occurred. Please take the proper precautions to keep all our students safe

✓ **TRAVEL:** Any student who travels out of the NJ, NY, PA, CT, DE area must isolate and take a test 3-5 days from their return. Students are not allowed to return to in-person instruction without a negative test result



✓ **LUNCH:** Lunch is taking place in the cafeteria. Students will not be able to sit with all their friends as we need to keep distancing while eating lunch. Depending on the table size we will only allow 4-5 students at a table as opposed to the normal 8

✓ **REMOTE INSTRUCTION:** Saint Ann School is ready for remote instruction should it be necessary, however, it is not offered unless for a documented long-term (more than 4 days absent) medical reasons. A note from your child's physician on letterhead is required in order for me to review whether it meets the requirements