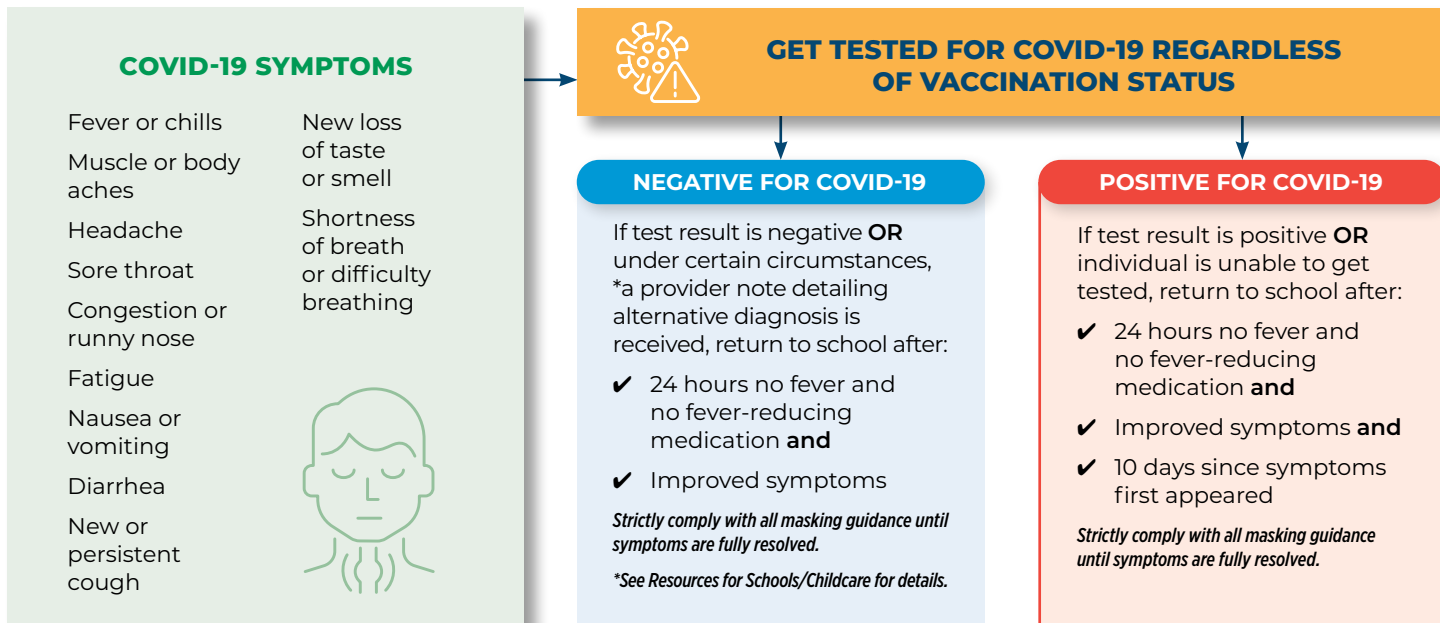


Return to Schools and Childcare Centers

All COVID-19 cases must be reported to the Philadelphia Department of Public Health (PDPH) at (215)685-5488 OR email covid.schools@phila.gov for contact tracing and further guidance.



POSITIVE COVID-19 TEST (PCR OR ANTIGEN)	
NO SYMPTOMS	SYMPTOMS
<p>Return to school IF:</p> <ul style="list-style-type: none"> ✓ 10 days after test collection date <p><i>If symptoms develop during your isolation, return to school date can be calculated from positive test collection date if other school criteria have been met.</i></p>	<p>Return to school IF:</p> <ul style="list-style-type: none"> ✓ 24 hours no fever and no fever-reducing medication and ✓ Improved symptoms and ✓ 10 days since symptoms first appeared

*CLOSE CONTACT TO SOMEONE WITH COVID-19 INCLUDES ***HOUSEHOLD CONTACTS	
NO SYMPTOMS	SYMPTOMS
<p>For unvaccinated:</p> <ul style="list-style-type: none"> ✓ 10 days after exposed without testing OR ✓ After 7 days if negative PCR/antigen test which was collected after day 5 <p><i>*The most protective recommended quarantine is still 14 days post exposure.</i></p> <p>For **fully vaccinated:</p> <ul style="list-style-type: none"> ✓ Get tested 3-5 days after exposure ✓ No need to quarantine ✓ Strictly following masking guidance <p><i>Monitor for symptoms for 14 days, regardless of vaccination status. If symptoms develop follow return to school guidance for Close Contact with symptoms.</i></p> <p><i>**Fully vaccinated means it's 2 weeks after the final dose of a one- or two-dose vaccine.</i></p>	<p>Isolate and get tested for COVID-19 regardless of vaccination status.</p> <p>Return to school IF:</p> <ul style="list-style-type: none"> ✓ 24 hours no fever and no fever-reducing medication and ✓ Improved symptoms and ✓ 10 days since symptoms first appeared <p><i>* Close contact: within 6 feet for 15 minutes over a 24-hour period (regardless of masking)</i></p> <p><i>*** Household contacts may require further investigation, by either PDPH or school officials, to determine dates of quarantine</i></p>