

Clairton/Jefferson Hills/ Pleasant Hills/ West Mifflin Grouping

ST. CLARE OF ASSISI

ST. ELIZABETH OF HUNGARY

HOLY SPIRIT

ST. THOMAS à BECKET

Opening Prayer

Father in Heaven,

From the days of Abraham and Moses until this gathering of your Church in prayer, you have formed a people in the image of your Son.

Bless this people with the gift of your kingdom. May we serve you with our every desire and show love for one another even as you have loved us.

Grant this through Christ our Lord, Amen.

Review of the On Mission Consultation Process

*Let's remember and review the
steps that we have taken
to get to today*

Review of the On Mission Consultation Process

April 2015 through October 2018	April 2015	Bishop Zubik initiates a year of Prayer and Study
	September 2016	329 Parish Consultation Sessions are conducted
	April 26, 2018	Bishop Zubik announces final groupings of parishes and clergy assignments, effective October 15
	October 15, 2018	New Clergy assignments and Interim Mass Schedules begin

Merger Timeline

EARLY MARCH 2020	BY APRIL 2, 2020	MAY 7, 2020	ANTICIPATED END OF MAY 2020	ANTICIPATED JULY 1, 2020
<p>Conduct Parish Assemblies</p> <p>Follow up meetings with Advisory Councils</p>	<p>Submit necessary documentation</p>	<p>Bishop Zubik meets with his Priest Council to discuss merger petition.</p>	<p>Bishop Zubik officially announces Decree for a New Parish at the end of May</p>	<p>Decree for the New Parish and Clergy Assignments become Effective</p> <p>New Parish Begins</p>

Difference Between Parish and Church

- ❑ A **parish** is a territory (geographic region), with people and a priest(s).
- ❑ **Churches** are sacred buildings designated for divine worship.
- ❑ In **July 2020** our 4 parishes will merge into one new parish. The current parishes will cease and we will become one new entity.

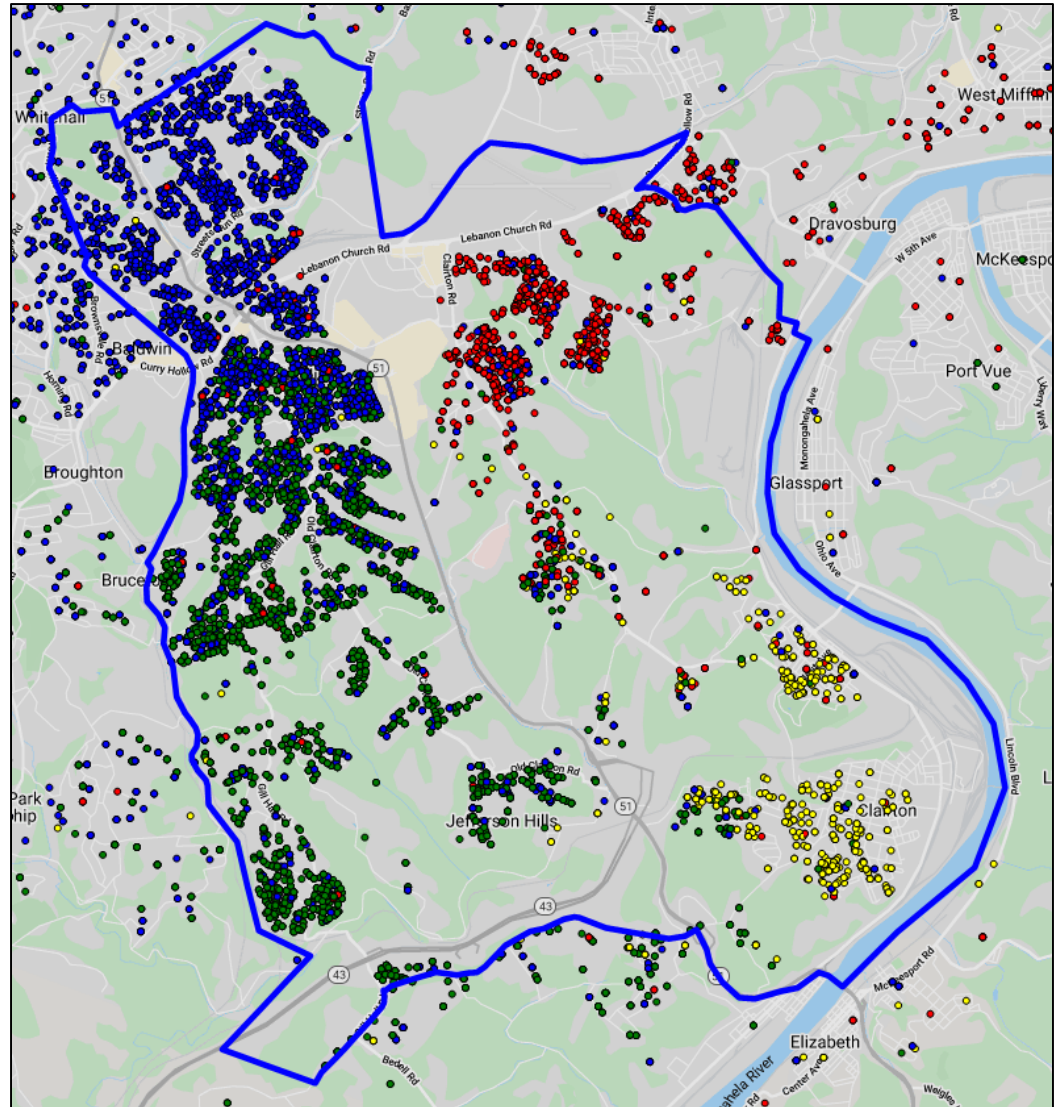
Who We Are Now: A Snapshot of the Grouping

Where do our parishioners live?

- The **dots** show where parishioners live.
- The **colors** show parish registration.


	Registered in St. Clare of Assisi
	Registered in St. Elizabeth of Hungary
	Registered in Holy Spirit
	Registered in St. Thomas à Becket

80% (11,790 out of 14,807)
live within the territories
of the 4 parishes

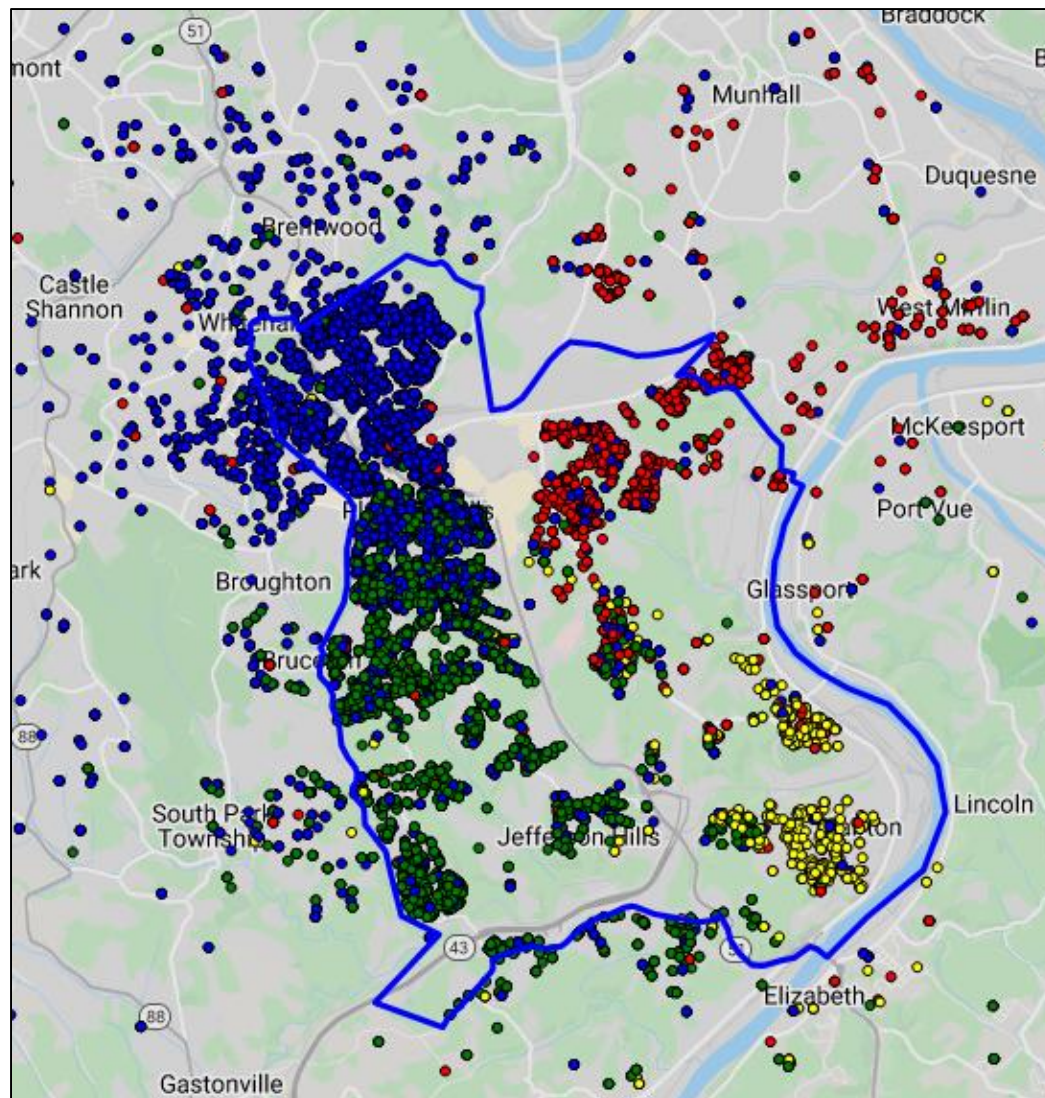


Where do our parishioners live?

- The **dots** show where parishioners live.
- The **colors** show parish registration.

	Registered in St. Clare of Assisi
	Registered in St. Elizabeth of Hungary
	Registered in Holy Spirit
	Registered in St. Thomas à Becket

80% (11,790 out of 14,807)
live within the territories
of the 4 parishes



2019 Statistics for the Grouping

Grouping Summary	Total
Mass Attendance Count	2,501
Infant Baptisms†	81
Deaths†	146
Baptism : Death Ratio	1:2

†Source: 2019 Official Catholic Directory

Seating Capacity and Mass Attendance Counts

Church Building	Seating Capacity	Number of Masses	2019 Mass Attendance Count
Saint Clare of Assisi	336	1	148
Saint Elizabeth of Hungary	625	3	953
Holy Spirit	400	2	473
Saint Thomas à Becket	850	3	927
Totals	2,211	9	2,501

Proximity of Church Buildings

Distances range from 0.8 to 8 miles

Distance in Miles

Church Buildings	Saint Clare of Assisi	Saint Elizabeth of Hungary	Holy Spirit	Saint Thomas à Becket
Saint Clare of Assisi		8 mi	6.2 mi	8 mi
Saint Elizabeth of Hungary	8 mi		2.7 mi	2.5 mi
Holy Spirit	6.2 mi	2.7 mi		4.2 mi
Saint Thomas à Becket	8 mi	2.5 mi	4.2 mi	

Source: Mapquest

Proximity of Church Buildings

Travel times range from 2 to 17 minutes

Distance in Time (Minutes)

Church Buildings	Saint Clare of Assisi	Saint Elizabeth of Hungary	Holy Spirit	Saint Thomas à Becket
Saint Clare of Assisi		17 min	12 min	15 min
Saint Elizabeth of Hungary	17 min		7 min	6 min
Holy Spirit	12 min	7 min		10 min
Saint Thomas à Becket	15 min	6 min	10 min	

Source: Mapquest

Creating Ministry Centers

St. Elizabeth of Hungary Education Center

- Pre-School - 8
- Elementary School
- Catechetical Programs
- Youth Ministry
- Adult Education

St. Thomas à Becket Administrative Center

- Offices
- Operations

Some of Our Shared Ministries and Events

Liturgical and Worship

- Holy Thursday Mass – one Mass with the combined choir
- Easter Vigil – one Mass with the combined choir
- Thanksgiving Vigil Mass with the combined choir
- Eucharistic Adoration

Parish Events

- Vacation Bible School
- Christmas Concert with combined choir
- Fish Frys/Festivals/Mardi Gras
- Divine Mercy Sunday Celebration (this year is the first combined)

Adult Faith Formation/Evangelization

- Unlocking the Mystery of the Bible
- Advent Meditations with Mary / Advent Meditations with Joseph
- No Greater Love – Lenten Program
- Path Toward Healing
- ALPHA
- Activated Disciples book study and discussion group – Live Jesus

Youth Faith Formation/Youth Group

- Recently formed and includes students from the various areas of our grouping

Service

- Bringing Holy Communion and visiting with residents at long term care facilities
- Bringing Holy Communion to the Homebound
- Tuesday Volunteering at the Food Bank

Shared Ministries

- Pastoral Council has been meeting together since November 2018
- Ladies of Charity have met together several times
- Apostolate & Hospitality Ministries have worked together on several events
- Knights of Columbus
- Senior Citizens Group
- Wedding Coordinators
- GRACE
- Martha and Mary Ministry
- Centering Prayer

Finances

- Operating Income & Expenses
- Assets (cash, savings, etc.)
- Liabilities (debt, payables)

At the time of merger, the new parish acquires the assets and liabilities of the former parishes

Financial Summaries

	Fiscal Year 2018 - 2019 as of June 30, 2019	Fiscal Year 2019 - 2020 as of December 31, 2019
Grouping	Total	Total
Offertory	2,091,223	934,092
Other Income	396,532	100,624
OPERATING INCOME	2,487,755	1,034,716
OPERATING EXPENSE	(1,921,217)	(933,573)
School Subsidy	(588,309)	(193,124)
SURPLUS/(DEFICIT)	(21,771)	(91,981)

Assets Summary (Savings) for the Grouping

Assets as of December 31, 2019	
Grouping	Total
Deposit & Loan Fund Savings	1,695,598
Deposit & Loan Capital Improvement Savings	7,950
Campaign for The Church Alive!	1,024,904
Parish Endowment Savings	352,640
Total	3,081,092

Liabilities Summary for the Grouping

Liabilities as of December 31, 2019	
Grouping	Total
Liabilities	
Insurance Payable	21,861
2019 Parish Share Payable	108,777
2019 Elementary School Grant Payable	75,381
Deposit & Loan Fund Debt	1,568,724
Total Debt & Payables	1,774,743

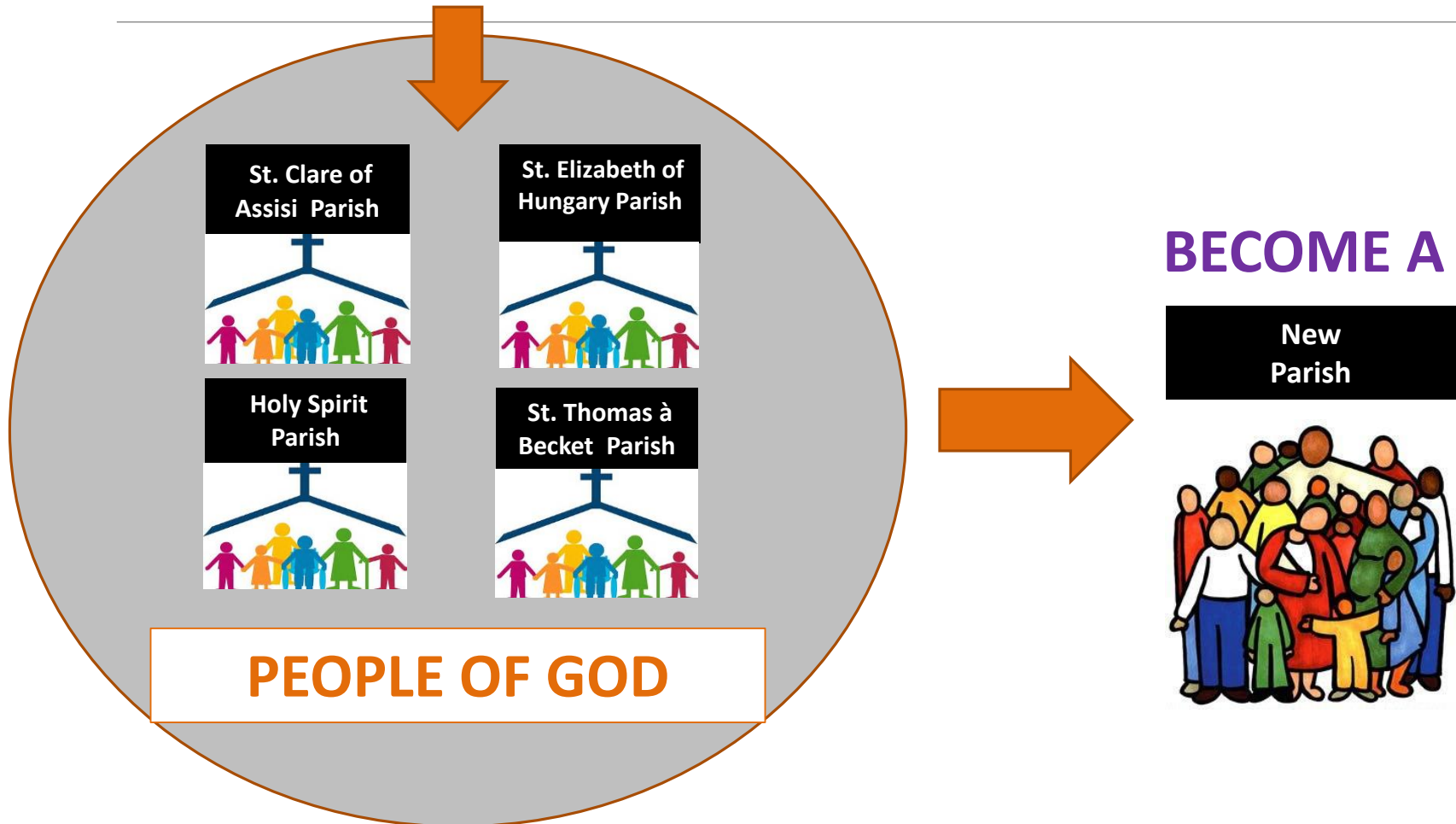
Staffing Realignment Timeline

Step 1	Step 2	Step 3	Step 4	Step 5
<p>Conduct an assessment of current staff positions (completed)</p> <p>Determine future staffing for some LEM roles</p> <p>Determine future staffing needs for clerical/ administrative/ maintenance roles</p>	<p>Post Positions</p> <p><i>Current employees are urged to apply</i></p>	<p>Interview For Positions</p>	<p>Notification of Hire</p> <p>Notification of Non-Hire</p> <p>Recognition of Service and Offering of Gratitude</p>	<p>Determine Date New Positions become effective</p>

Who We Will Become

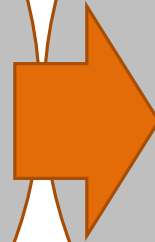
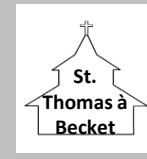
Here is what a merger looks like

THE FORMER PARISHES OF:



We will need to determine what churches will best serve our newly formed parish

**New Parish begins
with 4 churches**



New Parish



What church buildings will best serve the new parish is yet to be determined.

Mass Times - Considerations

Adjustments to the current Mass Schedule Are Contingent upon Priest Assignments.

Recommended Names for the New Parish

Recommended Names for the New Parish

Sacred Heart

Triumph of the Holy Cross

Saint Monica

Q & A



Closing Prayer