



Eight Great Churches of the East

Coming Together



Opening Prayer

Response:

“Come, Holy Spirit”

The Church Buildings in Our Parish Family

- St. Colman
- Good Shepherd / Sacred Heart
- St. John Fisher
- St. Jude the Apostle
- Madonna Del Castello
- St. Maurice
- Word of God





Welcome and Framing the Vision

Fr. Almada

Outline

- **Merger Timeline**
- **Who we are now**
- **Our Financial Picture**
- **Who We Will Become**
- **Our Buildings**
- **Our Staff**
- **Outreach and Evangelization**
- **Shared Activities**
- **What Can Each of Us Do ?**
- **The Name Game**

Merger Timeline

Early March 2020	Early April 2020	Early May 2020	Late May 2020	July 1 2020
<p data-bbox="453 605 782 701">Conduct Parish Assemblies</p> <p data-bbox="471 776 764 991">Follow-Up Meetings with Advisory Councils</p>	<p data-bbox="838 605 1207 758">Submit Documentation to the Diocese</p>	<p data-bbox="1258 605 1602 872">Bishop Zubik Meets with His Priest Council to Discuss Merger Petition</p>	<p data-bbox="1658 605 2007 815">Official Diocesan Decree for Formation of a New Parish</p>	<p data-bbox="2058 605 2418 929">Decree for a New Parish and Clergy Assignments Becomes Effective</p> <p data-bbox="2079 1011 2397 1143">New Parish Begins</p>



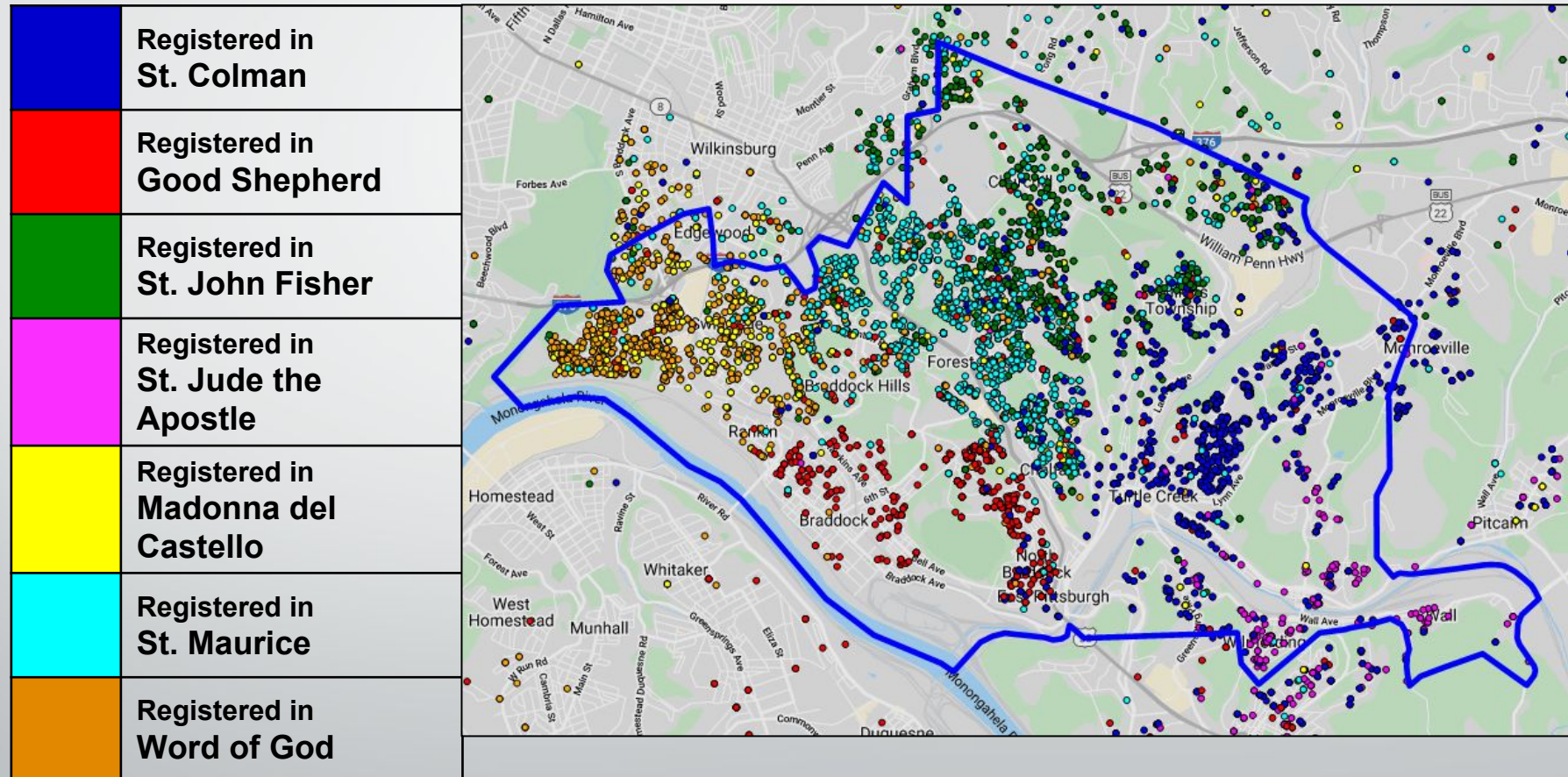
Who We Are Now

A Snapshot of Our Parish Family

Hello Neighbor

The dots show where parishioners live.

The colors show parish registration.



2019 Statistics

Grouping Summary	Total
Total Registration*	10,237
Mass Attendance Count	2,433
Percentage That Attend	24%
Infant Baptisms†	64
Funerals†	288
Baptism : Funeral Ratio	1:5

***Source: Parish Data System Reports (PDS) for Congregant Plots**

†Source: 2019 Official Catholic Directory, 2018 Official Catholic Directory and 2017 Annual Parish Report

Finances

- **Operating Income & Expenses**
- **Assets (cash, savings, etc.)**
- **Liabilities (debt, payables)**

At the time of merger, the new parish acquires the assets and liabilities of the former parishes

Our Combined Operating Income and Expenses

First Six Months of Current Fiscal Year

July 2019 – December 2019

	All Seven Parishes Combined	
Income	Offertory	\$900,858
	Other Income	\$91,748
	Operating Income Total	\$992,606
Expenses	Operating Expense Total (Including School Subsidy)	- \$1,219,403
Balance	Current Operating Deficit	-\$226,797

Our Combined Liabilities

As of December 2019

Liabilities	Combined Total
Diocesan Loan Fund Debt	\$2,696,541
2019 Parish Share Owed	\$185,404
Past Due Insurance Premiums	\$204,737
Total Combined Debt	-\$3,086,682

Our Combined Assets

As of December 2019

Monetary Assets	Combined Total
Diocesan Deposit Fund Savings	\$2,541,676
Returns from Campaign for the Church Alive	\$361,390
Parish Endowments	\$2,320
Total Combined Assets	\$2,905,386

The Big Picture

Debt
-\$3,086,682

Assets
\$2,905,386

Difference: - \$181,296

Moving Into the Black

What We Are Already Doing

- **Consolidating Parish Offices, Staff and Equipment into One Location**
- **Have Applied to the Diocese for a Grant from the Campaign for Church Alive to Retire a Portion of Our Historic School Debt**
- **Pending Sales of Current Surplus Buildings:**
 - **St. Colman School**
 - **Good Shepherd School**
 - **Word of God School**

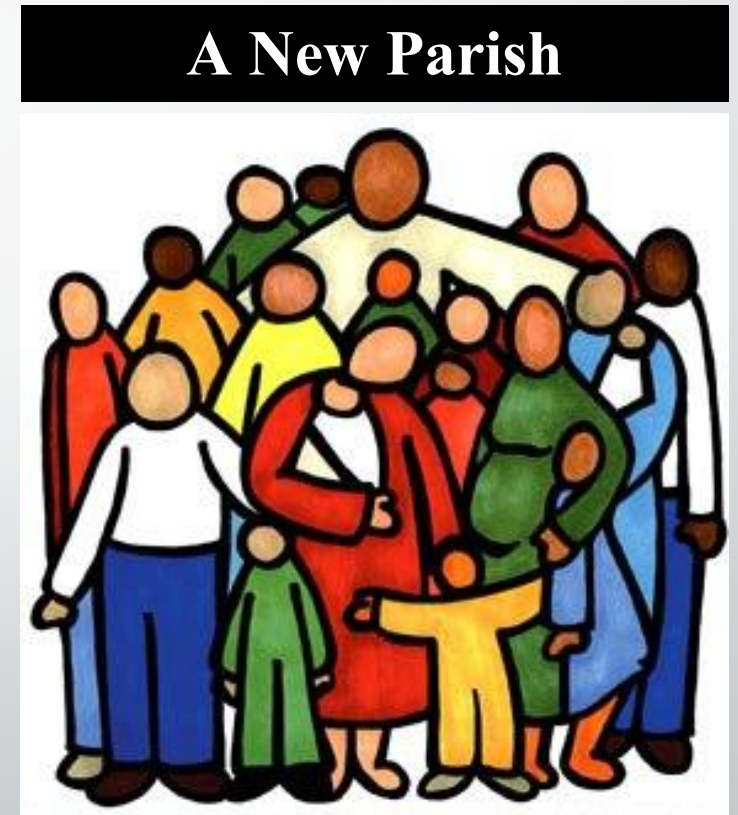
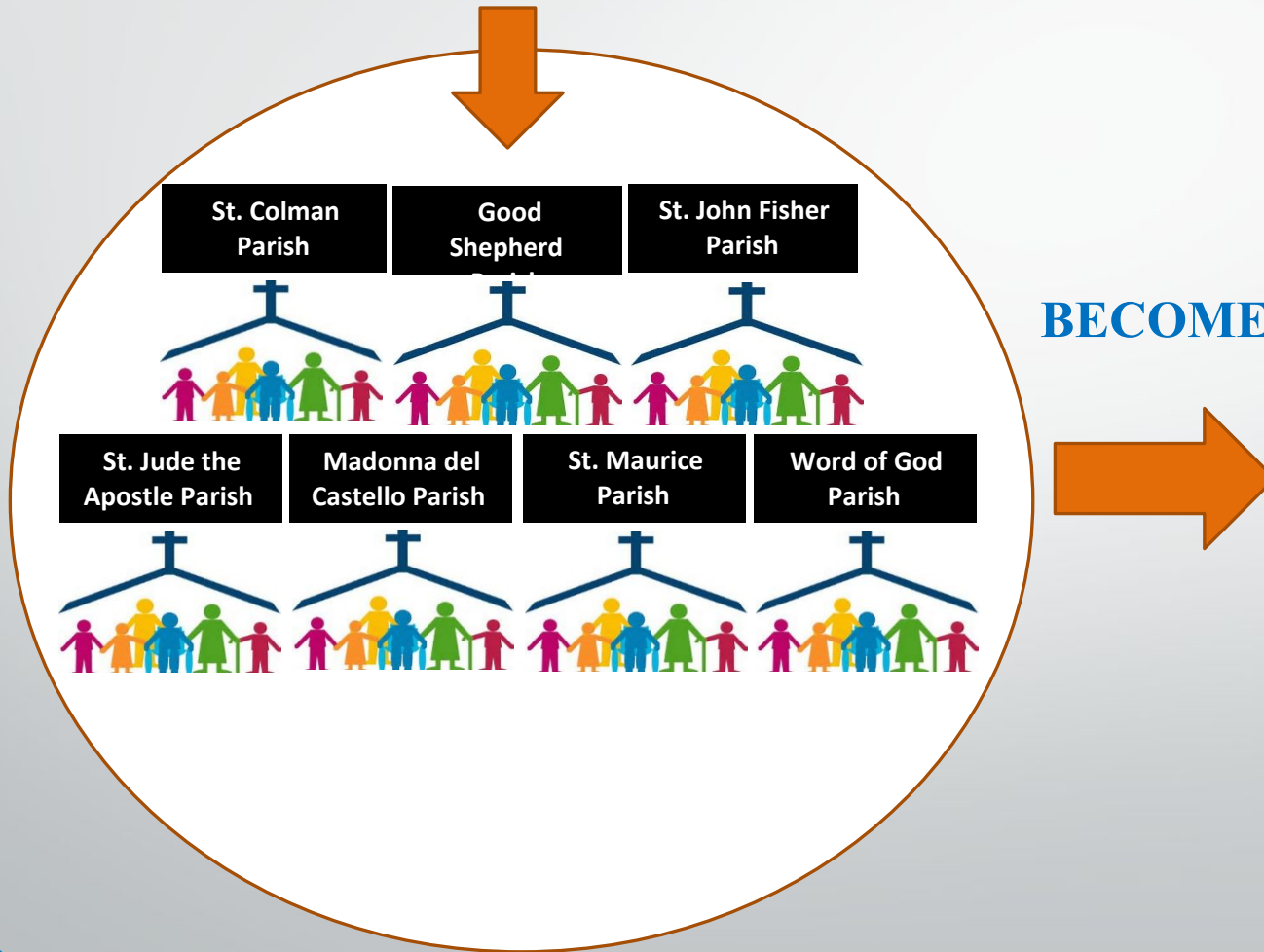


Who We Will Become

A Vision of Our New Parish Family Future

From Here to There

THE FORMER PARISHES OF:

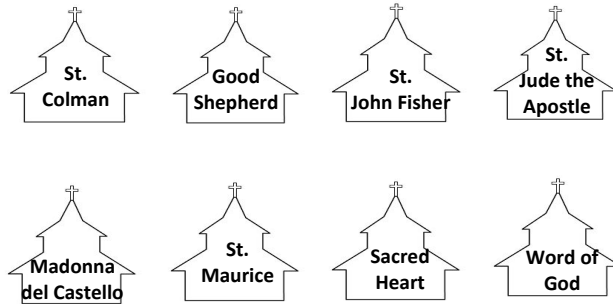


Now What ?

Can We Support All Our Existing Buildings ?

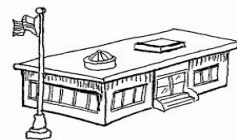
Our Parish Begins With

8 Church Buildings



13 Non-Church Buildings

4 Schools, 5 Residences, 1 Parish Center, 3 Garages



New Parish



We must decide
which buildings
will best serve
the new parish.



Now What ?

Will Mass Times Stay the Same ?

Our Parish Begins With



4 Priests

- 8 Church Buildings
- 24% of Registered Parishioners
- 12 Weekend Masses
- 12 Weekday Masses

Canon Law states that each priest can offer no more than 3 masses per weekend

New Parish



The Mass Schedule May Need to Be Adjusted Based Upon Changes in:

- Number of Priests
- Number of Church Buildings
- Mass Attendance



Each mass requires the necessary number of liturgical ministers

Now What ?

Who Will Support the Daily Operations of Our New Parish ?

- **Clergy (Priests & Deacons)**
- **Pastoral Associate**
- **Business Manager**
- **Director of Business Operations**
- **Director of Religious Education**
- **Music Directors and Organists**
- **Secretaries**
- **Safe Environment Coordinator**
- **Housekeeping/Janitorial**
- **Maintenance**

Now What ?

What Are Our Combined Resources for Outreach and Evangelization ?

- **Baptism Seminar**
- **“ChristLife”**
- **Pre-Cana**
- **RCIA**
- **Religious Education**
- **Wedding Committees**
- **Library/Gift Shop**
- **Knights of Columbus**
- **Ladies of Charity**
- **Service & Outreach**
- **Forest Hills and Swissvale Ministeriums**
- **Daughters of America**
- **Support Groups**
- **Angel’s Corner**
- **Food Pantries**
- **Giving Tree**
- **St Vincent DePaul**
- **Senior Citizens Services**
- **“Produce to the People”**

Now What ?

- **Bible Studies Will Strengthen Our Faith Community ?**
- **Catholic Men's Fellowship**
- **Choirs and Music Groups**
- **Prayer Groups**
- **Festivals**
- **Fish Frys**
- **Parish Picnic**
- **Bingos**
- **Italian Kitchen**
- **Youth Activities**



Now What ?

What Can Each of Us Do ?

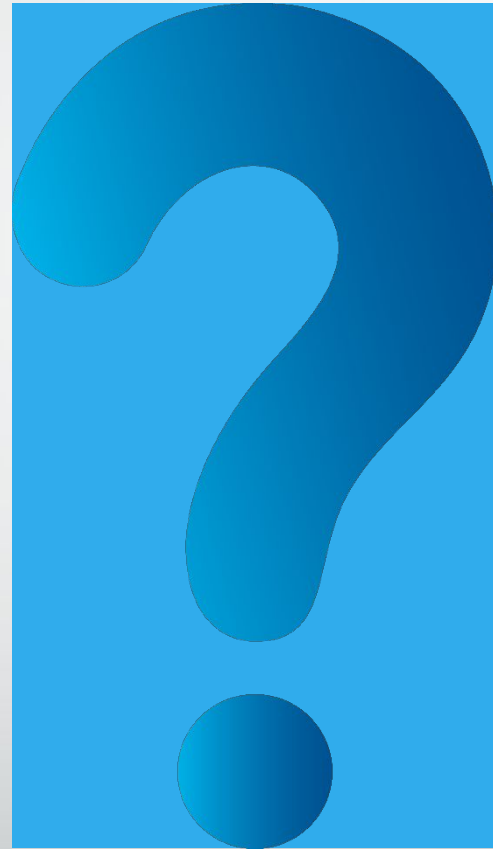
- **Attend Mass at Any of Our Churches**
- **Get Involved – Join/Volunteer**
- **Utilize Our Ministries**
- **Invite Others to Join Us**
- **Attend Parish Events/Socials**
- **Read the Bulletin – Stay Informed**
- **Give of Your Time, Talents and Resources**
- **Pray for the Success of Our New Parish**

Recommended Names for Our New Parish

These are the 5 approved names for the parish ballot

- **St. Joseph the Worker**
- **St. Peter the Apostle**
- **St. Francis of Assisi**
- **Christ the King**
- **Holy Angels**

Q & A



On Mission for The Church Alive!

Father of Mercy, as we journey On Mission for The Church Alive! endow us with your gifts of courage, collaboration, and compassion. Help us to fulfill the mission of Jesus and his Church through vibrant parishes and effective ministries. Raise up selfless, energetic leaders to serve the Church in fidelity and with care. May we the Church of Pittsburgh in Allegheny, Beaver, Butler, Greene, Lawrence and Washington Counties be sustained and strengthened by your grace. Help us to learn Jesus, to love Jesus and to live Jesus. Hear this prayer and grant it through Jesus Christ our Lord, with the help of our dear Blessed Mother, under the mantle of her love.

Amen.