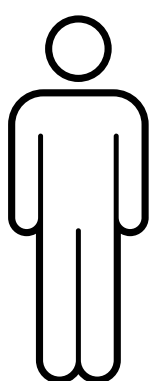
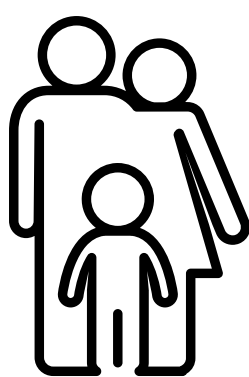


NEW WORSHIP PROTOCOL



Practice Social Distancing Guidelines

We're excited to see you and so are your fellow parishioners but please maintain a **six foot** distance from each other.



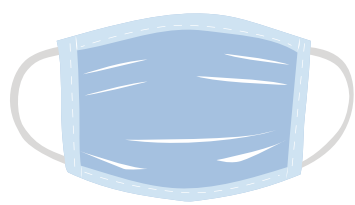
Pew Seating

We ask that you leave one pew between you and others. Please limit pew seating to only **members of your household**.



Limited Contact Masses

We're limiting physical contact throughout Mass. **Offertory baskets** may be located at a main entrance, **worship aids** are single use, there will be no exchanging of the **sign of peace** and we encourage you to consider **receiving the Eucharist** in your hands, rather than on the tongue.



Cloth face coverings are required

at all times in the building.



Thank you for your cooperation.

We are so thankful to be celebrating Mass with you in person after so many months. Our new protocol puts the health of you, your loved ones and our staff first and ensures we can celebrate Mass safely.

