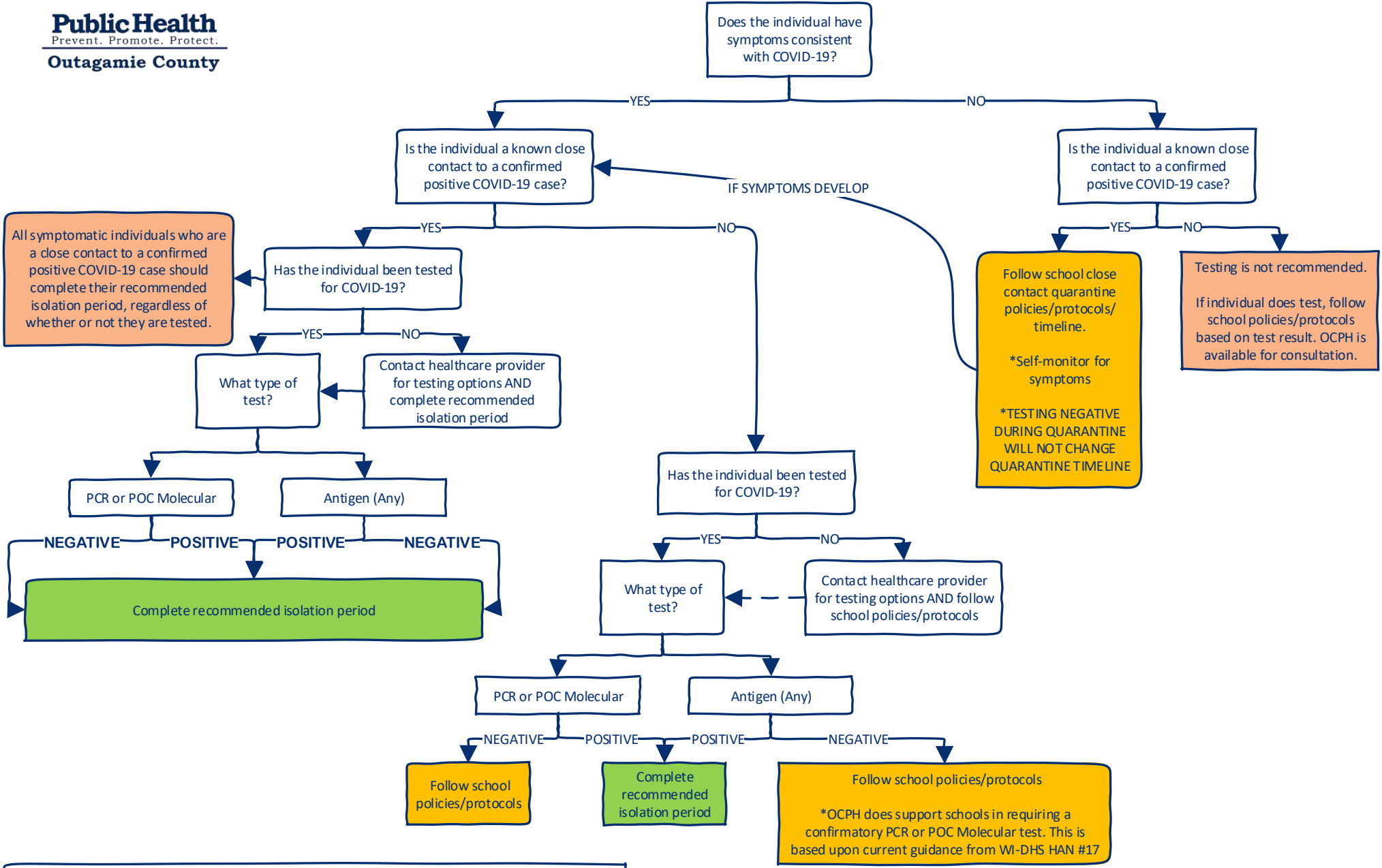




COVID-19 Testing Flowchart for Students/Staff in Schools
*This document is based upon OCPH interpretation of WI-DHS HAN #17 and WI-DHS OB Guidance p02757



All symptomatic individuals who are a close contact to a confirmed positive COVID-19 case should complete their recommended isolation period, regardless of whether or not they are tested.

Follow school close contact quarantine policies/protocols/timeline.
*Self-monitor for symptoms
*TESTING NEGATIVE DURING QUARANTINE WILL NOT CHANGE QUARANTINE TIMELINE

Testing is not recommended.
If individual does test, follow school policies/protocols based on test result. OCPH is available for consultation.