

Return to Learn

PLAN FOR 2020-2021 SCHOOL YEAR



 **REGIS**
MIDDLE SCHOOL
— XAVIER CATHOLIC SCHOOLS
Learning with a higher purpose!

Plan subject to change

Return to Learn

PLAN FOR 2020-2021 SCHOOL YEAR



The year 2020 has certainly presented all of us with a unique journey! Our Xavier Catholic School teachers and staff are excited and ready to continue our partnership with your family. Our administrators and Return to Learn committees have worked collaboratively and diligently to create a rigorous and safe plan to return our children to learning.

“XPERIENCE” THE DIFFERENCE: FAITH & CONNECTION

Regardless of how the school year may unfold, we remain steadfast in our commitment to “learning with a higher purpose” by providing a high quality Catholic education with an emphasis on personal connection between families and schools.

Families can expect that Catholic beliefs, traditions and teaching will continue to be the cornerstones of daily instruction; Mass will be celebrated; Teachers will have daily communication/interaction with students; Core classes (including Religion/Theology) and prayer opportunities will be conducted daily; and service opportunities will be offered.

We look forward to carrying on the joyous work of providing a Catholic education that feeds your child and family spiritually, emotionally, and intellectually.

Thank you for entrusting us with your most precious gift!

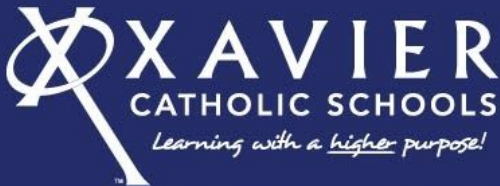
Yours in Christ,

Heather Williams, Principal, Holy Family/St. Jude
Zach Zeckser, Chief Administrator, Holy Family
Brian O'Donnell, Principal, St. Pius X
Megan Boomgarden, Principal, All Saints
Amy Conlon, Principal, St. Matthew
Casey Kettmann, Principal, St. Joseph
Josh Gredys, Principal, Regis
Angela Olson, Principal, Xavier
Chris McCarville, President, Xavier

Return to Learn

PLAN FOR 2020-2021 SCHOOL YEAR

Status of Programming & Facilities



COVID-19 STATUS OF PROGRAMMING & FACILITIES

	STATUS	PEOPLE	PROGRAMMING	PRECAUTIONS
1	CLOSED TO PUBLIC	<ul style="list-style-type: none"> ▶ Essential personnel only as identified by department supervisors ▶ Employees who are able to will work remotely ▶ No students on grounds 	<ul style="list-style-type: none"> ▶ Virtual learning ▶ Limited activities as approved with added safety measures ▶ Childcare is open as approved* 	<ul style="list-style-type: none"> ▶ Thorough decontamination of buildings ▶ Groups limited to ten people ▶ Physical distancing 6 ft. ▶ Masks recommended in building ▶ Check-in symptom monitoring in place ▶ Enter/exit through designated access points only
2	OPEN WITH LIMITATIONS	<ul style="list-style-type: none"> ▶ Visitors by appointment only ▶ Personnel reports to buildings as approved 	<ul style="list-style-type: none"> ▶ Hybrid learning ▶ Limited activities as approved with added safety measures ▶ Childcare is open as approved* 	<ul style="list-style-type: none"> ▶ High-level cleaning and sanitization of surfaces ▶ Adjustments to schedules, dining services and recess procedures ▶ Physical distancing 6 ft. ▶ Masks recommended in groups, common areas and when distancing is not feasible ▶ Check-in symptom monitoring in place
3	OPEN	<ul style="list-style-type: none"> ▶ Personnel resume work on-site ▶ Students, families, personnel and guests have standard access to facilities 	<ul style="list-style-type: none"> ▶ On-site learning ▶ Activities allowed with added safety measures ▶ Childcare is open as approved* 	<ul style="list-style-type: none"> ▶ High-level cleaning and sanitization of surfaces ▶ Adjustments to schedules, dining services and recess procedures ▶ Physical distancing 6 ft. where possible; Minimize crowds ▶ Masks permitted

ALWAYS REMEMBER: Maintain good hygiene with regular hand-washing, covering coughs and sneezes, and sanitizing work stations. Stay home when sick (see Mayo Clinic [self-screening tool](#)).

Return to Learn

PLAN FOR 2020-2021 SCHOOL YEAR

Overview

The Return to Learn team has composed a plan for three learning models Regis may implement throughout the school year. Regis may transition from one model to another as conditions and guidance dictates. The process may occur multiple times throughout the year. Model changes can be determined by any (or a combination) of the following governing entities:

- Governor of Iowa
- Iowa Department of Public Health
- Iowa Department of Education
- Archdiocese of Dubuque
- Regis Middle School Board (in collaboration with Linn County Public Health)

The faculty and staff at Regis are committed to carrying forth our mission no matter what learning model is in place. We will work hard for our students whether learning takes place fully on-site or 100% online. The purpose of these plans is to be proactive in our approach to educate our children in the safest and most effective way we can while keeping into consideration all of the various factors in play.

The Mission of Regis Middle School is to develop the whole person on a foundation of faith, service, academic excellence, and character-based leadership in the Catholic environment through an active partnership with dedicated families.

Return to Learn

PLAN FOR 2020-2021 SCHOOL YEAR

How Regis Middle School Will Begin the 2020-2021 School Year: On-Site Learning with a Online Option for Families

Regis will implement the On-Site Learning Model for the beginning of the 2020-2021 school year with an online option for all families at any time. This model will be implemented with significant health and safety measures in place to protect our students (and their families), teachers, and staff.

This model was selected with the following considerations taken into account:

- The need to provide social and emotional support to students through programming and social interactions.
- Consistent daily routine while having consistent access to teachers.
- Masks, face shields, and plexiglass desk dividers provide proper mitigation despite not having every desk 6 feet apart in each classroom.
- Proper scheduling using a Block Schedule allows for less cleaning in the classrooms by teachers as opposed to using a traditional 42-minute, 8 period day.
- Technology upgrades in adding devices for each student and increasing wireless access points to allow for complete accessibility in every room in the building. This includes larger areas such as the Gym, Cafeteria, and lower RLC room (large room next to cafeteria).
- The ability to make 6th and 8th grade cohort classrooms on the main floor due to classroom capacity.
- Survey and feedback communicated from staff and families.
- Students need structure and routine and an in-building model can provide that.
- Grouping students into a cohort that has classes together in the same classroom all day provides a consistent group of kids to limit exposure and makes it easier to monitor and track.
- Students enrolled in personalized learning are uniquely positioned for success in transitioning from in-person to online learning models.

Return to Learn

PLAN FOR 2020-2021 SCHOOL YEAR

On-Site Learning (Offering 100% learning in the building 5 days a week)

- The daily schedule will be a Block schedule
 - Students will have four 90-minute class periods each day
 - Lunch, prayer, and announcements are also included

- Students have 8 classes split up over two days.
 - On Gold days students will have even number classes (2,4,6,8)
 - On Red days students will have odd number classes (1,3,5,7)
 - Each grade will be limited to one Essential class (Art, Computer, PE) per quarter to limit exposure.

- Students will be in class with the same group of students to mitigate exposure.
 - Each grade is divided into cohorts:
 - 6th grade- 4 groups
 - 7th grade- 5 groups
 - 8th grade- 4 ups

- Cohort groups determined by Math classes and 8th grade classes.
 - In order to keep Math classes leveled to keep the pace of the curriculum and best meet the needs of the students.
 - Students in 8th grade may be taking Conceptual Science, Algebra 1, and Spanish 1, which not every 8th grader is taking.
 - Students that take classes at Xavier will take online and not be transported to Xavier.

- Adequate spacing of desks and usage of larger classrooms.
 - Average cohort size is 23 students per room and desks are adequately spaced as far apart as they can.

Return to Learn

PLAN FOR 2020-2021 SCHOOL YEAR

- Larger classrooms are also being used such as the former choir room and band room.
- Plastic and cardboard dividers are on every desk throughout the entire building.
- Lockers will not be used.
 - Students will carry their backpack to their home cohort class and will keep it in their cohort classroom.
 - Students will need to keep their phones turned off in their backpacks.
 - If students are bringing lunch they can place them in an assigned spot of their cohort room.
 - Students will only bring their backpacks to their cohort class and not take it to lunch
 - Most classes will be in the same classroom. For those that move, they can carry their backpack to the next class. A rolling backpack can be used if desired.
 - Students will still use notebooks and textbooks for most classes but a majority of learning and homework will be utilizing their iPads.
 - Therefore, students shouldnt be carrying too much.
- To effectively utilize our largest classrooms, 6th and 8th grade cohort classrooms will be on the main floor, while 7th grade cohort classrooms will be upstairs along with our choir room.
- Small group ensembles are developed for band and choir students
 - Smaller ensembles will allow for more individualized attention so students are making growth and improvement of vocal and musical skill sets.
 - This will also allow students to grow in their passion for music despite not having large group ensembles.

Return to Learn

PLAN FOR 2020-2021 SCHOOL YEAR

- Band and choir are still happening, but they look different.
- Students will be grouped in small ensembles and will perform an online showcase for families.
- Individual lessons for band and choir will be given preference to students online first as the online students won't be able to participate in small group ensembles.
- Teachers will rotate to each class, and have 5 minutes to transition to their next cohort classroom.
 - To help with easy transfer and access, each teacher will be given a cart where they can store their computer, iPad (to record their lessons), and other materials.
 - During teacher transitions, administration and teachers that have a plan period will be monitoring the halls while each classroom has their door open for supervision.
 - The transition time will only be for teachers as students will stay put with their masks on and sit behind their plexiglass desk divider.
 - Breaks for students will be staggered during their classes.
- Each cohort group will take the name of a Saint and will have a symbol and colors that identify their cohort. These identifiers will help instill a sense of community within our school.

Return to Learn

PLAN FOR 2020-2021 SCHOOL YEAR

Online Model (Students are 100% online)

- Some students will be doing this 100% for an entire quarter.
- If students have to be home because they are quarantined or isolated for COVID related reasons, they will be REQUIRED to zoom in IF THEY ARE NOT SICK and able to participate in class. If they are sick they will be marked ILL on Powerschool. An attendance form will need to be filled out and a phone call to the office with questions.
- Online Learning ensures that academic work is equivalent in effort and rigor to typical classroom work.
- All students are required to participate, attendance is taken, work is graded, and credit is granted.
- All classes are synchronous learning. The teacher is teaching to the students in the building and the online students are tuning in online via zoom.
- The Block Schedule for those on-site will still be used and students from home will tune in.
 - Students will be utilizing Google Classroom for assignments and classwork, and watching the teacher teach at school via Zoom.
 - There will be one zoom link for the day
 - The zoom link is posted in your student's 1st Period and 2nd Period class on Google Classroom.
 - If the student is having trouble getting into the zoom link, they should email the current teacher first AND also info@regisroyals.org.
 - Zoom will be used to provide direct instruction from the teacher to those who are remote.
 - Teachers will use wireless microphones to give quality audio for those tuning in via Zoom when necessary.
 - Assignments and grading are consistent with those in the building.
 - Zoom lessons will be live for those able to watch them.

Return to Learn

PLAN FOR 2020-2021 SCHOOL YEAR

- The commitment of online is to start the year but can be changed at any time, although a quarter long commitment is preferred.
 - If families want to switch their model from 100% online to 100% in the building or from 100% in the building to 100% online, they must schedule an appointment with Mr. Eichhorn and Mrs. Cummings by emailing them at ceichhorn@regisroyals.org and acummings@regisroyals.org
 - The purpose of this is to allow options for parents to feel safe.
- Attendance is taken for each class based on the student showing their face on Zoom
 - If the student did not show their face on Zoom, they will be counted absent for that class.
 - Every family's situation is different. However, attendance is essential in determining that students are completing the work and watching the lessons.
- Students can not be in small group ensembles when online for band and choir and will need to schedule individual lessons with either Band or Choir Instructor.
- Students will still perform an online showcase for families in the Fall based on individual lessons.
- All students using the online model will be included as a part of the cohorts in the building.
 - Students on-site will be in class with students online.
 - Some of the students in a cohort may be at school in the classroom and others may be at home, learning online.
 - Students are still a part of the cohort, so when they participate in live class Zooms, they are communicating with other students from school in that same cohort.
 - Students using the online model are still a part of the Regis community.

Return to Learn

PLAN FOR 2020-2021 SCHOOL YEAR

- We aim to be inclusive and respect the dignity of each person and teach the students to respect families' choices in choosing this model or "on-site."
 - Students will still have direct contact with their teachers each day.
 - Royal Time will be used to check in with these students and each student will have a staff member assigned to them to check in.
 - In most scenarios, this staff member is the student's Royal Time teacher
 - Royal Time is an advisory period that all students have.
- Can families switch from on-site to online at any time?
 - Families will be initially asked to indicate this request via a survey.
 - Any future requests to move to an online format will need to be sent to Kelly Nachman, our guidance secretary at knachman@regisroyals.org at least 2 days prior to changing learning models.
- We prefer that families not change modes of learning more than once per quarter.

Full School Online Learning

This model would only be implemented school-wide in the event of a school closure by the Governor, the Iowa Department of Public Health, or the Regis Middle School Board (which would be decided upon through collaboration with Linn County Public Health). This would be a combination of synchronous and asynchronous activities, zoom, and google classroom would be utilized. Students would have a combination of live and recorded lessons and would still zoom with their classes to continue social interaction with their peers.

Return to Learn

PLAN FOR 2020-2021 SCHOOL YEAR

Health & Safety

The following health and safety protocols would be implemented for all three models.

Face Coverings

Face Masks

REQUIREMENTS

Face masks are required to be worn by all students in all areas of the building. Staff will be required to wear face coverings at all times, either a face shield, mask, or both. Staff must have masks on when within 6 feet on individuals. Mask breaks will be implemented during the school day. Teachers will provide mask breaks during times when students are seated at their desks. They will take their masks off behind the plexiglass desk dividers that will be attached to each desk. There will be two 5 minute breaks per block. Other potential times for mask breaks may also include during lunch, band, or appropriate fitness/wellness activities.

- Supply: Students can provide their own cloth face covering in compliance with Dress Code requirements. Regis will provide two (2) masks from PS Adfinity, one solid black and one solid red color with the Regis logo on the front. These are provided for each staff member *and* student.
- Regis will also provide mask lanyards to be worn around the neck for staff and students. These lanyards will be used to clip the mask onto when having a mask break, eating lunch, or playing an instrument.
- When students are outside of the building, they are NOT required to wear a mask if they are 6 feet apart.

Return to Learn

PLAN FOR 2020-2021 SCHOOL YEAR

EXCEPTIONS

Exceptions for wearing face masks will be made for medical reasons. A doctor's note will be required and provided to the Nurse. The note must be signed by a medical doctor (MD or DO). If the student cannot wear a mask a health plan will be developed. In order to be in the building, face protection is essential. Therefore, students must wear a face shield in place of a mask. Entrance into the building will not be allowed without some form of face covering.

DRESS CODE

Students at Regis will be allowed to wear face masks they bring from home (sports teams or multi-colored allowed). The mask must fully cover the nose and mouth and secure under the chin with ties or ear loops.

Neck gaiters, open-chin triangle bandanas, costume masks, or any other variations are not permitted. Face masks with (or without) the Xavier logo are also available at Lands End.

Face Shields

Face shields will be supplied to all students and staff.

STUDENTS:

Strongly encouraged anytime. Does not replace face mask, but may be worn in addition to a face mask.

STAFF:

- Required when teaching or working with others and able to social distance.
- Face shields may be used in addition to masks when not able to social distance.

Return to Learn

PLAN FOR 2020-2021 SCHOOL YEAR

Facilities & Cleaning

HVAC System

Regis will be utilizing outdoor spaces as much as possible for the learning environment to provide breaks from the classroom environment. Air conditioner filters will be cleaned and changed out often. We will be constantly monitoring the air quality conditions within the classrooms and limiting long periods of time spent in one space. Utilizing opening windows to help with air circulation will be done weather permitting.

Sanitation

SURFACES

Surfaces in each classroom will be sanitized every day. Staff is using Oxivere to sanitize surfaces. Desk dividers will be sprayed and air dried once a day. While students are in class, common areas will be sanitized including restrooms and hallway handrails.

RESTROOM USE

Smartpass is an app that will be downloaded on every device and will be used to keep track of students throughout the building including the restroom. This will also aid in ensuring the restrooms are cleaned in a timely manner by janitorial staff.

DRINKING FOUNTAINS

Hydration stations will be installed in place of our regular drinking fountains. They will be available for use as a water bottle filler station (drinking directly from the fountain will not be allowed). Students and staff should provide their own refillable water bottles for hydration during the school day.

HAND SANITIZATION

Hand sanitizer dispensers are placed by the staircases, entrances, and in the hallways for all students and staff to use throughout the day. Hand sanitizer is also provided in

Return to Learn

PLAN FOR 2020-2021 SCHOOL YEAR

every classroom and office area. Students and staff will be expected to “gel in and gel out” using hand sanitizer as they enter and exit a room. Proper hand washing is required and encouraged. The nurse will work with the staff and students and train them on the most effective way to wash hands and the importance of sanitization.

Physical Distancing

CLASSROOMS

Furniture in classrooms and other areas will be rearranged to maximize physical distance between and among staff and students. When possible, classes will use larger spaces or outdoor areas. All desks will have plexiglass latch-on dividers since not every class size allows desks to be 6 feet apart.

HALLWAYS

There will be a limited number of students allowed in the hallways during class time. With every student having an iPad and using electronic hall passes, the number of passes allowed at any given time will be limited in order to minimize students in the hallways or restrooms. Using Smartpass will help with monitoring the number of students in the hallways. Signs stating directional flow of hallway traffic will be placed on the hallway floors to ensure social distancing. Signs every 6 feet are placed on the lockers and walls to remind students to not follow too close. When cohorts are released for lunch, they will be released one cohort at a time and teachers will be in charge of escorting them to the cafeteria, Art, and PE.

PARTITIONS

Partitions will be used to separate staff and visitors at the front desk of all office areas. Circular feet signs will be used to help students understand and ensure social distancing in common areas like restrooms, the lunch line, and the main office.

Return to Learn

PLAN FOR 2020-2021 SCHOOL YEAR

Food & Nutrition

LUNCH & BREAKFAST

- Students will eat lunch in the cafeteria and lower RLC (large room next to cafeteria) with every student sitting from each other using student desks, not tables.
- Desks will be faced one way toward the windows with a plexiglass latch-on divider on each desk.
- Eating outside will be encouraged when possible and closely monitored by staff to ensure social distancing.
- Students will use an ID card for the lunch staff to scan versus having the students manually enter their code.
- Food service staff will offer pre-packaged items instead of self-serve.
 - There will be pre-packaged salads and condiments.
- Specific areas for each worker to function within the kitchen will be assigned to social distance while preparing the food
 - Main/alt, fruits/vegetable, one computer/dishes
 - A la Carte items will be on a cart and food service staff will go to the students and scan their ID if they choose to purchase a la carte items.
- Students will use hand sanitizer while in line.
- Students will be expected to maintain distancing standing on the floor signs to enforce six (6) feet social distancing while waiting in line.
- Plexiglass shields will be placed on the serving line and checkout table.
- Students will remove their mask when seated for breakfast or lunch.
- Breakfast will be served before school between 7:15am and 7:40am.
 - If students are not eating breakfast they must report directly to the gym where they will sit with their cohort on the bleachers or gym floor. Students must sit on an X that is marked 6 feet apart from each other. Administration and Essentials (Gym, Band, Choir, Computer, Art) teachers will be supervising students in the gym until 7:50am when morning prayer and announcements begin.

Return to Learn

PLAN FOR 2020-2021 SCHOOL YEAR

- Supervisors and Food Service staff will wipe down all student desks and dividers at the end of breakfast.
- Supervising teachers will wipe down all student desks and dividers at the end of each lunch period.

Additional Measures

REMINDERS & SIGNAGE

Hygiene practices such as frequent and thorough handwashing will be encouraged throughout the day. Routine reminders will be posted throughout the school regarding physical distancing, cough etiquette, and staying home when ill.

SEEING THE SCHOOL NURSE

To visit the nurse, students must use their electronic hall pass. There is a limit of three passes allowed to be in use throughout the building to visit the school nurse. Students will stand physically distant while waiting for their turn. Classrooms will be provided with a first aid kit to attend to minor first aid needs in an effort to limit traffic in the hallways and potential exposure to illness.

ISOLATION AREAS

Isolation areas have been designated for those students needing to go home ill. All areas will be thoroughly sanitized after each student use.

ILLNESS PROTOCOL

Students will be evaluated following protocol from Linn County Public Health concerning any communicable diseases.

Return to Learn

PLAN FOR 2020-2021 SCHOOL YEAR

Screening

Staff and students who are exhibiting signs or symptoms of COVID-19 will be required to stay home.

AT-HOME SCREENING

Students and staff must screen for illness prior to coming to school. This includes daily temperature screening at home. Anyone with a temperature of 100.4 or above must stay home and communicate that to the school.

If a family is unable to screen for fever at home, students can be screened by the school nurse upon arrival to school. Anyone with a temperature of 100.4 or above will go to the nurse's office and have their parents called to take the student home. All students will have their temps checked during their lunch period. Student's with a temp of 100.4 will go to the nurse's office and call home.

Return to Learn

PLAN FOR 2020-2021 SCHOOL YEAR

SYMPTOMS

People with COVID-19 have had a wide range of symptoms reported – ranging from mild symptoms to severe illness. Symptoms may appear 2-14 days after exposure to the virus. People with these symptoms may have COVID-19:

HIGH RISK SYMPTOMS

New cough, shortness of breath or difficulty breathing, new loss of taste or smell

LOW RISK SYMPTOMS

Fever, headache, muscle and body aches, fatigue, sore throat, runny nose, congestion, nausea, vomiting, diarrhea

Students and staff members should remain home when sick. Students or staff members with any high-risk symptom or two or more low risk symptoms should stay home and are advised to seek an evaluation by a health care provider.

GUIDANCE PROVIDED BY



STUDENTS/STAFF EXHIBITING SYMPTOMS

If a staff or student exhibits COVID-19 related symptoms, has a positive test, or has been identified as being in close contact to someone who has tested positive, they will follow the 10/3/3 rule:

1. Ten (10) days must pass from the start of symptoms *AND*
2. Must be fever-free (<100.4) for 24 hours without the use of medication *AND*
3. Demonstrate significant symptom improvement

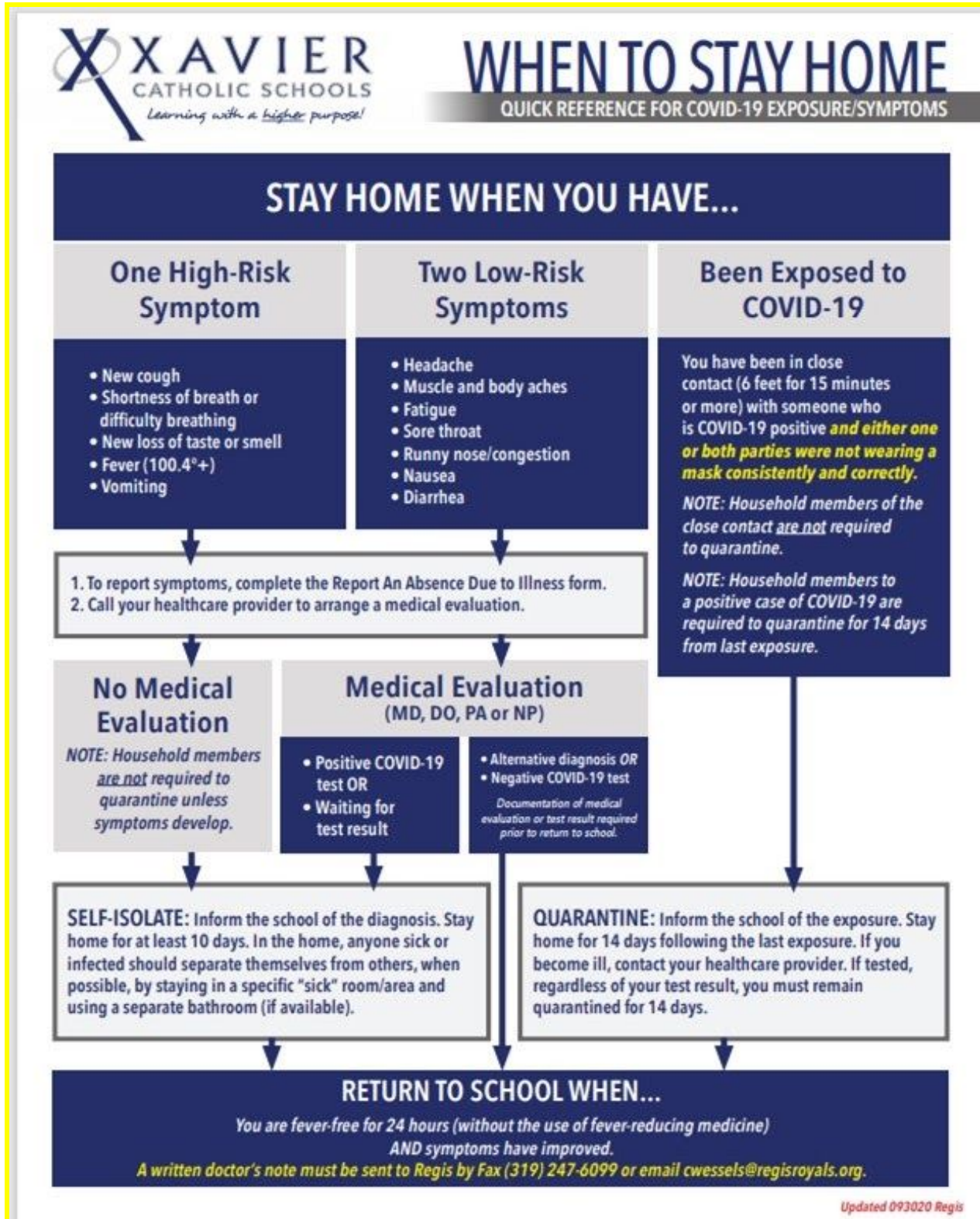
If they are able, students will be expected to attend online classes while quarantining/isolating at home. While quarantining/isolating, students may not participate in or attend activities/events.

Close Contact is defined by being less than six feet of an individual for 15 minutes or more or have direct physical contact. Mitigation efforts (fewer students in the building at one time, face covering requirements, and physical distancing) are in place to

Return to Learn

PLAN FOR 2020-2021 SCHOOL YEAR

minimize the amount of students and teachers/staff who would be in close contact with each other.



Return to Learn

PLAN FOR 2020-2021 SCHOOL YEAR

Catholicity: Learning with a *Higher Purpose*

The theme for Regis Middle School this year is “Stronger Together.” Our scripture verse is Matthew 18:20 “For where two or more gather in my name, there am I with them.”

With our school theme, teachers and staff know the importance of the school community and the only way to conquer adversity is through Jesus and doing that together as a Regis Family. Regis Middle School will utilize the cohort model to create a sense of community and relationship building throughout the Regis staff and students. Saints have been chosen based upon relatability and age, with some being more contemporary. A symbol for each cohort Saint is currently being developed and will be used to identify the group when they eat together or are meeting in the Gym before school. The purpose of this is to have students:

- Learn more about their chosen Saint.
 - Be able to identify the virtues that Saint possesses
 - Create a life mantra using quotes or life events from that Saint
 - Understanding the faith formation of that Saint
- The following is a symbol for one of the cohorts:



Return to Learn

PLAN FOR 2020-2021 SCHOOL YEAR

- Other Saint Cohort groups are:
 - 6th Grade:
 - St. Kateri
 - Blssd. Pier Giorgio Frassati
 - St. Imelda
 - St. Maximilian Kolbe
 - 7th Grade:
 - St. Faustina
 - St. Bernadette
 - St. Oscar Romero
 - Blssd. Chiara Badano
 - Venerable Carlo Acutis
 - 8th Grade:
 - St. Therese of Lisieux
 - St. Maria Goretti
 - St. Joan of Arc
 - Blssd. Isidore Bakanja

Regis Middle School will continue its commitment to developing our children's faith with the following:

- Starting each day, class, and lunch with prayer
- Leading service projects
- Having Religion classes plan each Wednesday Mass
- Royal Ambassadors of Faith (selected 8th grade students) will promote a faith-based student body through leading different activities, prayers, and services
- Weekly Masses
- Monthly Adoration
- Religion classes for each grade
- Exploring retreat possibilities
- Open Chapel from 7:30am to 7:45am with Miss Christensen
- Learn about Social Justice and Catholic Social teaching through the lives of the Saints and the Religion curriculum

Return to Learn

PLAN FOR 2020-2021 SCHOOL YEAR

Mass

Safety guidelines for on-site mass will be created and developed in concert with current Sunday Mass safety guidelines. Each grade will rotate having Mass in person. Students not in attendance would participate watching the Mass live streamed from their classrooms. All Masses will be live streamed for families to watch in real time. We do not have Mass every week but the Mass schedule can be found on our School calendar.

Focus

In order to build a strong community with our school theme "Stronger Together," there will also be a focus on the Catholic Social Teaching pillar of solidarity. Regis Middle School wishes to grow as a school and individuals in culture behavior and understanding of the human dignity of others.

Return to Learn

PLAN FOR 2020-2021 SCHOOL YEAR

Arrival and Dismissal of Students

Provided below is more detailed information about our Drop Off and Pick Up procedures. Please consult the Return To Learn plan for more additional guidance.

Morning Drop Off

- 6th and 7th grade student drop off location is the Main Entrance, parking lot off K Avenue. No parking in the lot will be allowed. PLEASE pull up all the way down the drop off lane.
- 8th grade student drop off is at the bottom of the hill on Prairie Drive. Students must enter through the red doors (up the stairs from Prairie Drive).
- Students arriving **before 7:30 am** will report to the cafeteria downstairs.
- Students arriving **after 7:30 am** go directly to their cohort, which is listed as *Homeroom* on their schedule.

If they arrive before 7:30 am and are waiting, they are allowed to use their phones. Once they get to their cohort, their phones are turned off and in their backpacks.

After School Pick Up Locations

6th Grade: 3:10 pm Main Entrance parking lot, up the drive from K Avenue

7th Grade: 3:10 pm Gravel lot (off the drive from K Avenue) by tennis courts, this will be a pick up lane style

8th Grade: 3:10 pm Prairie Drive

Students will be grouped according to their cohort in the designated pick up areas until their ride arrives. There will be supervision until 5pm in the lunchroom after school. For early dismissal days, Regis asks that all students be picked up within 30 minutes of dismissal time. All students that are not picked up by 3:45 will then report to the cafeteria with Mr. O' Toole and he will be supervising students until 5:00.

We ask parents to please be courteous when leaving the parking lot and let cars exiting the 7th grade pick up area into the car line leaving Regis.

6th grade : 3:10 pickup

- Escorted through yellow doors at the front of school

Return to Learn

PLAN FOR 2020-2021 SCHOOL YEAR

- Cohorts will walk around to the back side of the building
- Cohorts will physically distance along sidewalk adjacent to building
- Cones will be placed to block off parking spaces closest to building for student safety
- Students that have not been picked by 3:25 will be led to the cafeteria to be supervised by Mr. O'Toole

7th grade: 3:10 pickup

- Escorted through the main entrance
- Cohorts will walk to the tennis courts
- Cohorts will physically distance on the tennis courts
- Students that have not been picked up by 3:40 will be led to the cafeteria to be supervised by Mr. O'Toole

8th grade: 3:10 pickup

- Escorted through red doors to Prairie Dr
- Cohorts will physically distance on the hillside
- Students that have not been picked up by 3:40 will be led to the cafeteria to be supervised by Mr. O'Toole

- Mr. O'Toole has been a study hall supervisor for us in years past and this year he will be a sub in our building along with acting as after school supervisor. All students not picked up immediately after school will be supervised in the cafeteria. We are working on getting a phone number you can call to reach him to let him know when you are present to pick up your child/children.

- If you have any questions or concerns about pickup and dropoff please email Mr. Gredys at jgredys@regisroyals.org

ENTRY INTO THE BUILDING

No adults other than Regis Staff members are allowed in the building. Deliveries from UPS, US Postal service, etc. will all be done at the main door. Parents will need to drop items off at the main entrance. Students can deliver checks and forms to the office instead of the parent. Forms can also be scanned, or mailed in. Doors will be

Return to Learn

PLAN FOR 2020-2021 SCHOOL YEAR

open at 7:00am, however we encourage all students to arrive after 7:30am. Students who arrive before 7:30 will report to the cafeteria.

Return to Learn

PLAN FOR 2020-2021 SCHOOL YEAR

Academics

TEACHERS

Teachers will be reporting to in-service days prior to the first day of school. This will provide time to collaborate as a staff, analyze student data, go over health and safety protocols, and discuss effective modes of teaching and learning.

Focus throughout the school year will be placed on essential learning that students did not receive during the 4th quarter last year. Best practices backed by research support teaching grade-level content as the academic priority while filling those potential gaps (or as needed) when instruction of the material occurs throughout the school year. Teachers will be utilizing the data from one another to close gaps and ensure gaps from the spring are closed during this school year.

An IXL licensure was purchased for all students to access Math and English Language Arts activities aligned to Common Core standards. Teachers and students will be trained on how to use this program. IXL will be used in Math and Language Arts classes and during Royal Time.

Two primary areas of importance are Math and Language Arts which use standards that build upon each other, and literacy and math skills are essential and cross-curricular. This is why we have purchased IXL licensures for both Math and Language Arts.

IXL will provide diagnostic and analytical data to give teachers an accurate portrayal of a student's individual needs and current performance and skill sets.

Grade level teachers will meet in teams for "child study" where they discuss students in their classes, interventions, possible parent meetings, and develop strategies to best meet each student's needs.

Return to Learn

PLAN FOR 2020-2021 SCHOOL YEAR

STUDENTS

In addition to daily use of IXL, students will be taught time management skills in their Royal Time classes and will be given strategies to be effective and proactive with their study time. An emphasis on time management and executive functioning skills will be taught at the beginning and throughout the school year throughout all classes, especially during Royal Time.

The use of objectives and “I can” statements are essential to letting students know what they are expected to learn at the end of each unit. Students will be able to identify the objective of each lesson and/or assignment, whether in class or online.

Study tables may be provided in person and virtually throughout the week from 3:10pm to 3:30pm with individual teachers. See Parent/Student handbook for more information on this. However, this is subject to change.

Technology for Online Learning (Hybrid & Online Models)

All students will have iPads. Teachers will have their own Macbooks, Apple TV's in each classroom, iPads to record, and wireless microphones for those watching online. Coursework will be accessible through Google Classrooms. Grades will be posted on Google Classroom and final report grades will be posted on PowerSchool.

Return to Learn

PLAN FOR 2020-2021 SCHOOL YEAR

Student Expectations

All students are expected to follow our school mantra, the Royal Way, in the building and at home while online.

R: Respectful—to all teachers and peers through their words and actions. Treating everyone how Jesus would.

O: Optimistic—Students smile and follow directions with enthusiasm even when it isn't fun.

Y: Yearn for Christ—Be serious and intentional during prayer and Mass, to grow in a relationship with Jesus.

A: Accountable—Students admit their mistakes, apologize, take action, and move on to be better.

L: Leader—Students stand up for what is right and look out for each other, they strive to always do what's right for others and themselves.

=====

If the school building is closed, Regis will provide online continuous learning. Classes and classwork expectations will continue. Students will be expected to adhere to one of the following methods in regard to direct instruction, the teaching and the learning of concepts:

- Students can watch class instruction live based on times provided.
- Students can watch the recorded version of class during a time that works for the student and/or family

Return to Learn

PLAN FOR 2020-2021 SCHOOL YEAR

Students are expected to behave in a school-appropriate manner when participating in online Zoom classes including active participation with iPad/device camera remaining on during class. This includes making sure their camera is on so teachers can see their face and not an image.

- Students are expected to check Google Classroom, participate in scheduled classes, and complete assigned activities.
- Students should actively monitor their school email account and reply to teachers in a timely manner.

Schedule & Attendance

Each student will be given a schedule posted on PowerSchool. This schedule will be the same whether the student is in the building or online. All students are expected to attend and participate in class and submit work for feedback and grades.

- Students have 8 classes split up over two days.
 - On Gold days students will have even number classes (2,4,6,8)
 - On Red days students will have odd number classes (1,3,5,7)
 - Each grade will be limited to one Essential class (Art, Computer, PE) per quarter to limit exposure.

Students that Choose 100% Online Option:

Attendance will be taken by the teacher through PowerSchool at the start of each class. Students will be required to have their cameras on and participate during the entire class. If the camera function is not on, they may be counted absent so it is important that each student has their camera turned on.

Students that are Online if Quarantined/Isolated:

Students should plan on attending online classes as their health allows. Classes that are missed can be viewed through a live Zoom link that will be accessed in their google classroom class site for each individual class. Homework missed while in

Return to Learn

PLAN FOR 2020-2021 SCHOOL YEAR

quarantine/isolation will need to be completed. Arrangements with the individual teachers should be made in regards to homework. Students who can still attend class will be marked as present. Those that are too sick to attend will be counted absent for the class.

In-Person:

All students are expected to attend and participate in class and submit work for feedback and grades. Attendance will be taken at the beginning of each class meeting.

Grading

Teachers will continue to employ both formative and summative assessments to students. Standard grading practices will remain in place. Consult the Student-Parent Handbook for additional details.

Activities

IHSAA, IGHSAU, IHSMA continue to provide and update guidance for activities. These can be found here

- [IGHSAU COVID-19 Resource Center](#)
- [IAHSAA COVID-19 Guidance](#)

We will be sharing guidance for fall activities and spectators in the coming weeks as it becomes available.

Return to Learn

PLAN FOR 2020-2021 SCHOOL YEAR

Social Emotional Well Being

Every student at Regis Middle School will have a Royal Time teacher. This teacher will be assigned to every student in their Royal Time class period and will check in with them on a daily basis.

Our School Counselor will also be available for students who would like to talk individually or in small groups. She will be prepared for extra student support needed to help students cope with the uncertainties that a pandemic brings.

Regis will be utilizing Royal Time to build a sense of community, provide an emphasis on faith, and learn more about specific virtues and qualities of their designated Saint. The students will utilize Royal Time to grow together as a group in addition to growing throughout the day as they will be in the same classes with each other.

Return to Learn

PLAN FOR 2020-2021 SCHOOL YEAR

Important Contacts

General

Josh Gredys, Principal: jgredys@regisroyals.org

Academics

Josh Gredys, Principal: jgredys@regisroyals.org

Angie Cummings, Lead Teacher: acummings@regisroyals.org

Spiritual

Jerica Christensen, Campus Ministry: jchristensen@regisroyals.org

Jill Sires, Campus Ministry: jsires@regisroyals.org

Social/Emotional Support

Beth Neuhaus, School Counselor: bneuhaus@regisroyals.org

Technology

Cameron Eichhorn, Technology Director: ceichhorn@regisroyals.org

Health & Wellness

Cassie Wessels, School Nurse: cwessels@regisroyals.org

Return to Learn

PLAN FOR 2020-2021 SCHOOL YEAR