

# AT A GLANCE

As Catholics, we have a deep understanding of the relationship between the Church building and our prayers for our family and friends who have died. From the earliest days of the Church's life, we have revered the places where our brothers and sisters are buried. We have gathered around the altar for the Mass to offer the efficacious sacrifice of Jesus, our Savior, to assist our beloved departed on the continuation of their journey.



## BURIAL IN AND NEAR THE CHURCH



One of the most wonderful reminders of our community with the departed is the custom of burial within the confines of the Church. The bones of the saints are placed beneath the altar and the faithful have been buried in crypts and parish cemeteries. We have a constant reminder of our love for those who have died and of the importance of our continued prayers for them.

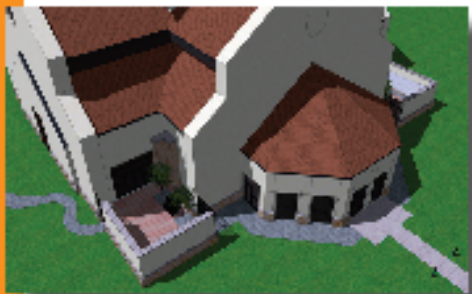
## CREMATION



Because the original reason for the prohibition against cremation no longer exists it has been lifted in the Catholic Church. The burial of a body in a "church yard" is neither practical nor permissible by state law, but cremation is both allowed and convenient.

# THE ST. JUDE COLUMBARIUM

We have built the first of two columbaria to receive the cremated remains of our beloved dead. This is located just outside the east transept near the statue of St. Jude. The second will be built on the adjacent west transept near the statue of The Blessed Virgin. This will form an enclosed meditation garden, available for prayer in daylight hours. Niches are available to St. Jude parishioners and their family members.



# THE COST

The cost of a niche is \$3,000. Urns and engraved nameplates are available for an additional cost. Each niche will accommodate two urns.

For more information or to purchase a niche, contact:

**Sue Hawthorne**  
972-727-1177 ext 2211  
[shawthorne@stjudeparish.com](mailto:shawthorne@stjudeparish.com)



# THE COLUMBARIUM

