

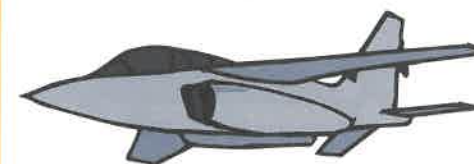
**CONDUCT CODE**  
 A - Awesome, godly model  
 E - Excellent, no infractions  
 S - Satisfactory, minor infraction  
 D - Disruptive behavior  
 U - Unsatisfactory, discipline required

**J** is for

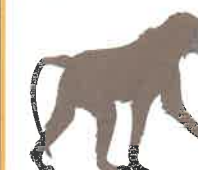
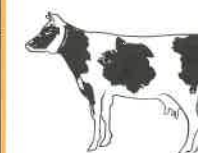
joy.

Learning God's word brings joy to you and to God. Memorize scripture every day to put it in your heart.

Write the name of the fast airplane that begins with a j.



Circle the animals that would live in a jungle.



Number of books read this week:

- 1 spin
- 2 clap
- 3 grade
- 4 swim
- 5 place
- 6 last
- 7 test
- 8 skin
- 9 drag
- 10 glide
- 11 just
- 12 stage



Behold, I am sending you like sheep in the midst of wolves; so be shrewd as serpents and simple as doves.

Matthew 10:16

OCTOBER 2020

MONDAY

Math 27 5  
 Read "Teacher's Pets"

TUESDAY

Math 28 6  
 Read

WEDNESDAY

Math 29 7  
 Read

PRESS ON To Be Wise

THURSDAY

Math Test 8  
 Read

FRIDAY

Reading Test 5 9  
 Spelling Test 5  
 Religion Test Ch. 5