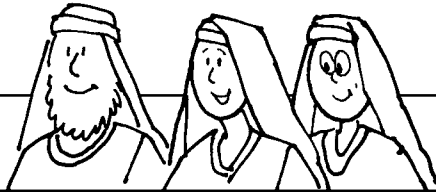
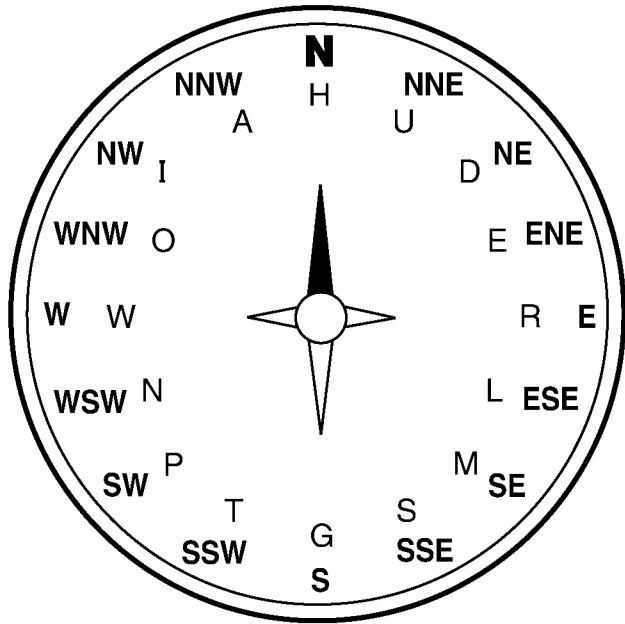




Then Jesus explained to the crowd what this parable meant. Find out who the "good soil" is!



Use this compass code to fill in the blanks.



“ \_\_\_\_\_  
 SW ENE WNW SW ESE ENE

W N WNW N ENE NNW E SSW N ENE

W WNW E NE NNW WSW NE

\_\_\_\_\_”  
 NNE WSW NE ENE E SSE SSW NNW WSW NE NW SSW

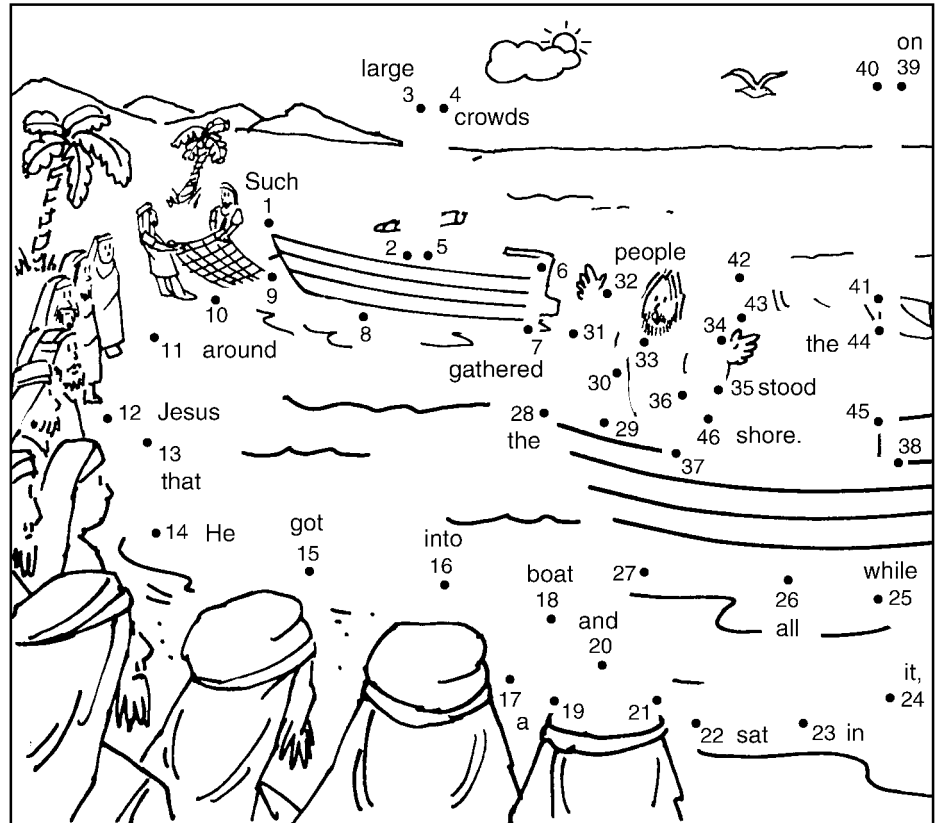
Ages 7+

July 12, 2020 • Matthew 13:1-9, 18-23

# The Parable of the Sower

Jesus sat by a lake. Many people gathered around Him. What did Jesus do?

Connect the dots and read the words along the way.



St. Luke the Evangelist

Catholic Community

5605 Cloverly Ave Temple City, CA 91780

626 291-5900

www.stluketemplecity.org

Enter your **SECRET CODE** to unlock games @ [games.childrensbulletins.com](http://games.childrensbulletins.com) **SECRET CODE**  
**FFGJT8**

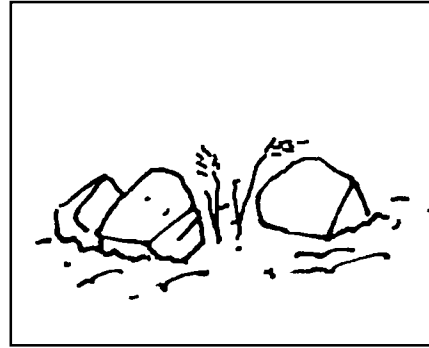


Jesus told the crowd a parable.

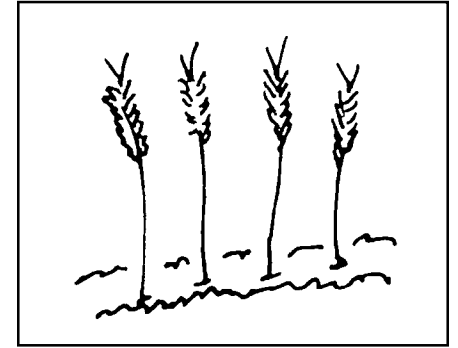
Fill in the blanks below with words from the box. Then match the description with the correct picture.

ate	crop	grew	seed	birds	choked	plants	quickly	withered
sow	fell	path	soil	other	farmer	sprang	produced	scattering
sun	good	root	among	rocky	places	thorns	scorched	

1. "A \_\_\_\_\_ went out to \_\_\_\_\_ his \_\_\_\_\_ . As he was \_\_\_\_\_ the seed, some \_\_\_\_\_ along the \_\_\_\_\_ , and the \_\_\_\_\_ came and \_\_\_\_\_ it up.

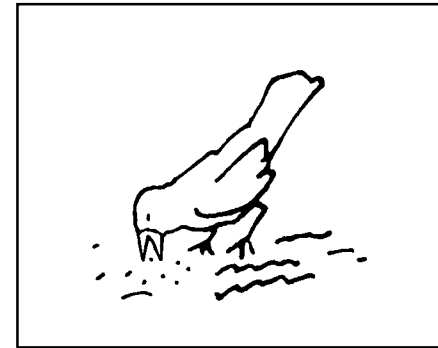


# \_\_\_\_\_



# \_\_\_\_\_

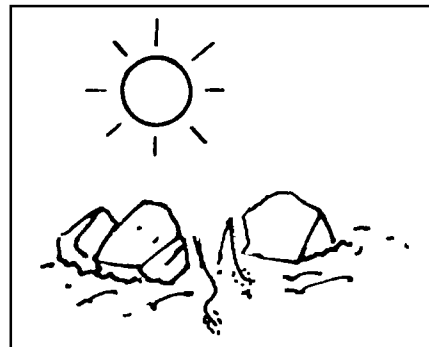
2. Some fell on \_\_\_\_\_ , where it did not have much \_\_\_\_\_. It \_\_\_\_\_ up \_\_\_\_\_ . ...



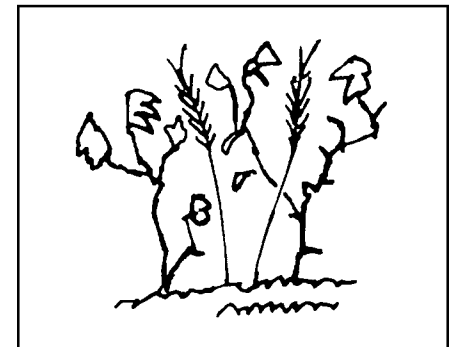
# \_\_\_\_\_

3. But when the \_\_\_\_\_ came up, the \_\_\_\_\_ were \_\_\_\_\_ , and they \_\_\_\_\_ because they had no \_\_\_\_\_ .

4. Other seed fell \_\_\_\_\_ , which \_\_\_\_\_ up and \_\_\_\_\_ the plants.



# \_\_\_\_\_



# \_\_\_\_\_

5. Still \_\_\_\_\_ seed fell on \_\_\_\_\_ soil, where it \_\_\_\_\_ a \_\_\_\_\_ ."