

SAVE THE DATE

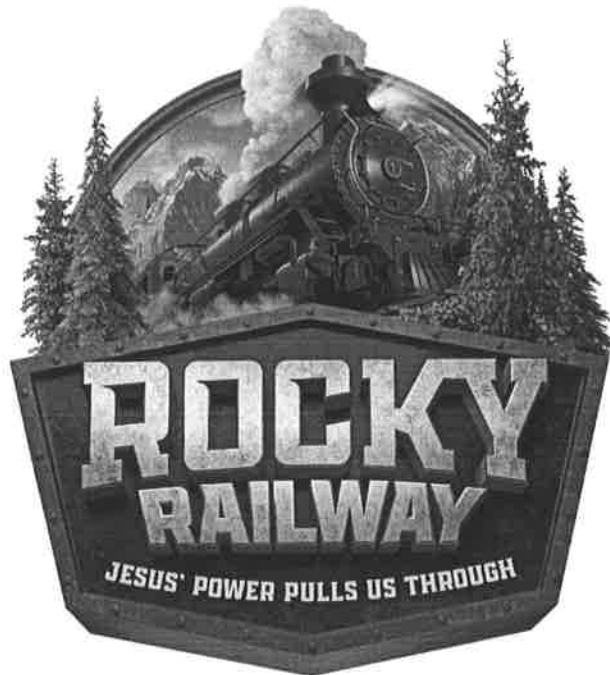
**St. Gerard
Annual
Fundraiser**

● SATURDAY, OCTOBER 23, 2021 ●

AUCTION & RAFFLES:

CLASSROOM ART, KANGAROO RAFFLE, PRINCIPAL FOR THE DAY,
2 HOUR GYM, JEANS DAY PACKETS, TEACHER EXPERIENCES, WINE PULL,
BEER & WINE TASTINGS, FOOD TRUCKS AND MORE!

St. Gerard Parish Vacation Bible School 2021



**FOR CHILDREN ENTERING 4 year old preschool
through 5th grade **IN THE FALL****

Monday June 21st—Wednesday June 23rd 9am - 11:30am

Sign Up Deadline: June 15th

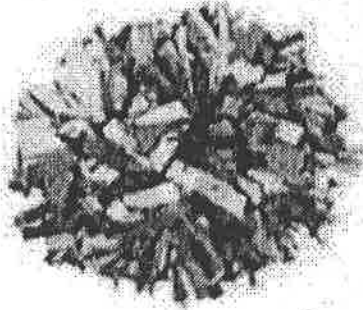
COVID Safety Protocols will be followed

For more information, registration and Crew Leader Application go to:

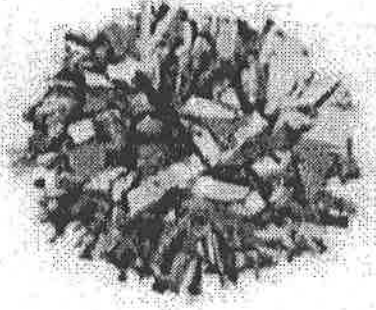
<http://www.stgerard.org/vacation-bible-school-1>

Or call Religious Ed Office: 517-321-4179

SIDELINE CHEER



Tryouts!



JUNE 10th 3:30 - 5:30

JUNE 11th 3:30 - 5:30

Please come with your hair pulled back, wearing shorts, t-shirt, and tennis shoes. Be sure to bring a water bottle and a good attitude.



EVERYONE

is welcome! No experience needed,
we will teach you everything you need to know!



CONTACT COACH KIM AT (517) 802-7967

KIM.LINDBERG@LANSINGCATHOLIC.ORG

COUGAR.CHEERLEADING@LANSINGCATHOLIC.ORG

epic!

Keep them reading all summer long!

Epic Unlimited is just \$9.99 for 3 months.
(3 months for the price of 1!)

- **40,000+ books**, audiobooks & learning videos.
- **No time limits!** Read anytime, anywhere.
- **Fun badges**, rewards & a Reading Buddy.
- **New books** added each week!

Sign up now through June 17, 2021 at
<https://www.getepic.com/connect/kvq5768>

95% of Epic parents say
Epic helped improve their
child's reading skills.



Promotional price available with new subscription.
After initial 3 months, you will be charged \$9.99/month
until you cancel. Cancel anytime. Sales tax may apply.

Waverly Swim Club

www.waverlyswim.org

Summer 2021 Registration

Parents/guardians: Register your swimmer on either

Mon, 6/14/21 or Tues, 6/15/21

8:00 am - 9:00 am

Waverly High School Pool

*Summer Session runs from
Monday, June 14 thru Friday, July 30, 2021*

Swimmers, bring your suit!
Swimmers will be evaluated at registration
for level placement.

For more information/fee schedule visit our website
www.waverlyswim.org
or contact Cathy at 321-1992 or dclashbrook@comcast.net

