

Westerville Area Resource Ministry
COMMUNITY IMPACT REPORT 2019



Each of you should use whatever gift you have received to serve others, as faithful stewards of God's grace in its various forms. 1 Peter 4:10

FEEDING
client choice
market



WORKING
workforce
development

TRANSFORMING
referrals
for services



WHAT IS WARM

CHOICE MARKET

CHILD NUTRITION PROGRAMS

- Share Bac A Pac
- Westerville Area Kids Lunch Club

WORKFORCE DEVELOPMENT

CLIENT SERVICES AND REFERRALS

VOLUNTEERS AND FINANCIAL PARTNERS

HOPE, PRAYER, ENCOURAGEMENT AND
SPIRITUAL SUPPORT

MISSION AND VALUES

WARM provides compassionate, short-term assistance, educational services and spiritual support in order to encourage individuals to achieve a God-reliant, self-sufficient life while restoring dignity and hope.

- We recognize God through our work.
- We believe in the dignity of each individual.
- We work to help people become self-sufficient.
- We strive to be exemplary stewards of resources with a vision for the future.
- We exist to serve our community.

Scott Marier Executive Director

MISSION, FOCUS & COMMUNITY

WARM's Mission is our guiding light. WARM's Focus is reflected in our Values which direct us in helping people in ways that honor God and our neighbors. The Community identifies those we assist and all that serve and work with us.

The Choice Market has provided short-term assistance in the form of hundreds of thousands of meals since 1972. Our Kids Lunch Club and Share Bac A Pac summer and weekend meal programs for youth make sure hungry children are nourished in both mind and body throughout the year. Our new Workforce Development Program prepares people for higher-paying jobs that lead to self-sufficient lives. Additionally, our programs and services provide life coaching and referrals to other community resources, providing a hand up to those needing it.

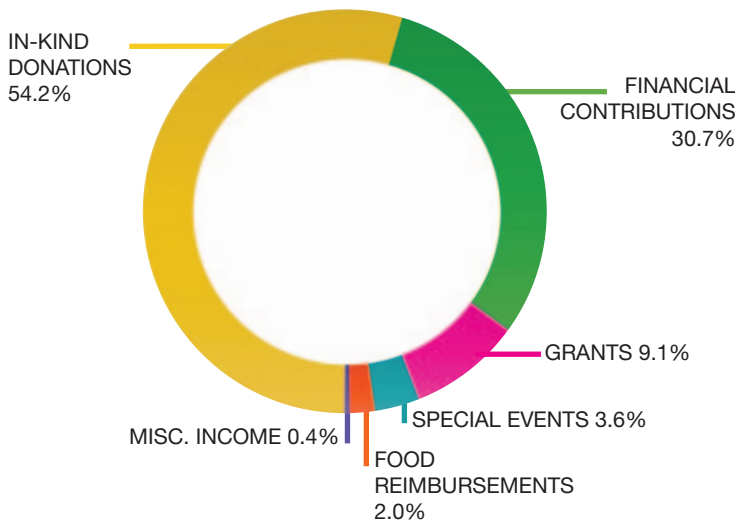
Our Values and Vision provide focus. Focus on the needs of others. Focus on today's necessities while keeping a watchful eye on emerging poverty trends, such as shifts in community demographics and the need for living-wage jobs.

WARM is a Community Resource, and we draw from the community's collaborative strength. Generous residents donate food to feed their hungry neighbors. They give money for program services that help others toward greater self-sufficiency. And hundreds of volunteers donate thousands of hours each year so others can have better lives.

Our mission is clear, our focus is keen, and our community is engaged. Come join us. Your partnership makes it possible, and your blessings and stewardship have an impact! Together, we are making a real difference.

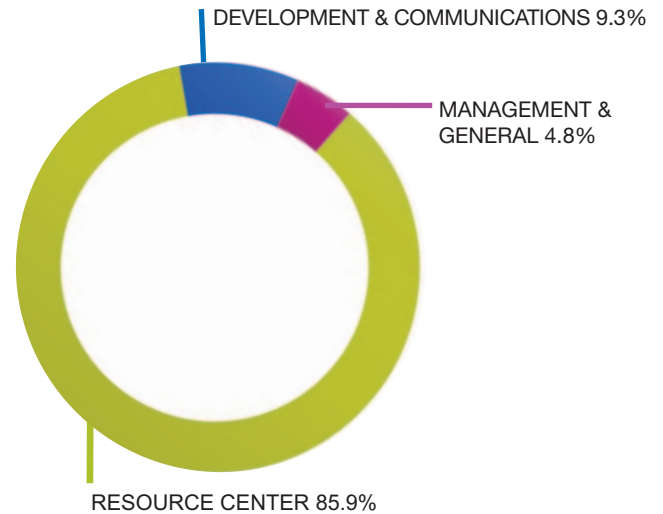
Financial Performance 2019 - Un-Audited

REVENUE



Financial Contributions	\$ 690,111
Grants	\$ 203,500
Special Events	\$ 80,002
Food Reimbursements	\$ 44,789
Miscellaneous Income	\$ 9,666
In-Kind Donations	\$1,218,866
Total	\$2,246,934

EXPENSE



Resource Center	\$1,943,045
Development & Communications	\$ 211,683
Management & General	\$ 107,853
Total	\$2,262,581

2019 Net Assets \$1,609,519

YOUR BLESSINGS AND GENEROSITY HAVE AN IMPACT

NUTRITION

397,440 Total Meals Provided
314,064 Choice Market Meals
61,520 Share Bac A Pac Meals
21,856 Kids Lunch Club Meals

VOLUNTEERS

13,508 Service Shifts
34,178 Service Hours
216 Service Learning Projects



PROGRAMS

Coaching/Mentoring
- Client Consultations 3,755
- Way2Work (program started in July 2019)

- 10 new jobs
- \$405,700 Total Yearly Earnings

DONATIONS

\$690,111 Individual Gifts
\$337,957 Other Support/Revenue
\$1,218,866 In-Kind Donations (\$ Value)
709,569 lbs In-Kind Food Donations

Consider donating \$50 a month
Donate online at www.warmwesterville.org



150 Heatherdown Dr.
Westerville, OH 43081

WARM INFO

save the dates 2020

March 30, closes April 6 Knock Out Poverty
May 7 Westerville Community Prayer Breakfast
June 10-11 The Big Give
July 4 Westerville Parade
July 11 & 12 Westerville Music & Arts Festival
September Hunger Action Month
November 21 Thanksgiving Blessing
December 5 Holiday Food Drive



2020 WARM Board of Directors

Donna Andriot (*Treasurer*)
CPA, Capstone Financial Consultants Inc.

Jefferson Blackburn-Smith (*Chair*)
VP Enrollment Management, Otterbein University

Jonathan Bull Senior Pastor,
St. Paul Evangelical Lutheran Church

Mike Heyeck (*Vice Chair*)
Founder, The Grid Group, LLC

Paul Johnson Principal, JP Tech, LLC

Unhee Kim President,
Mount Carmel St. Ann's Hospital

David Koo Director of Practice Operations,
Mount Carmel Medical Group

Scott Marier Executive Director, WARM

Jamie Maze Jamie Maze Real Estate, LLC
Re/Max Impact

Scott Reeves Executive Director, Secondary
Academic Affairs, Westerville City Schools

Tom Schmitt (*Secretary*)
Partner at Metz, Bailey & McLoughlin

Joe Simonet Associate Vice President,
Culture, L Brands

Lynne Themelaras Associate Pastor,
Oasis City Church