

Student Learning Expectations (SLE's)

The entire school community strives to provide a nurturing environment in which the dignity of each individual is respected and diversity is celebrated. Students are given the opportunity to develop the skills to become active Christians who are aware of their responsibilities as members of society. In this Catholic environment, we hope to help our students develop life-skills and values which are necessary to be compassionate and contributing global digital citizens. To remind the school community of the basis for all that we do, the keywords in our school-wide learning expectations (SLE's) create the acronym F.A.I.T.H.

A graduate of St. Frances of Rome School is:



A Faithful Catholic who:

- Prays and goes to church
- Treats others with kindness

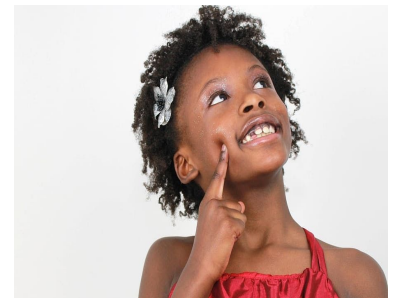


An Aware citizen who:

- Is aware of current world events
- Respects all cultures

An Intelligent student who:

- Reads for learning and enjoyment
- Uses technology to study and do research
- Has an appreciation for the fine arts



A Thinking person who:

- Knows right from wrong and takes responsibility for his/her actions
- Works well with others and listens to others

A person who Honors life by:

- Making healthy life choices
- Setting goals and working to achieving them

