

Welcome to Third Grade!!

With Miss Catherine Empfield



Schedule

- Posted daily on the board
- Specials Schedule is posted on my MPRCS page
- Daily Routine includes:
 - Religion, Math, ELA, Science, and Social Studies



Dress Code

- Please make sure to thoroughly read through the handbook guidelines
 - Main points to look out for:
 - Conservative mostly white or mostly black sneakers may be worn with the walking shorts only (not in winter)
 - Student's hair is to be neat and clean, and groomed presentably.



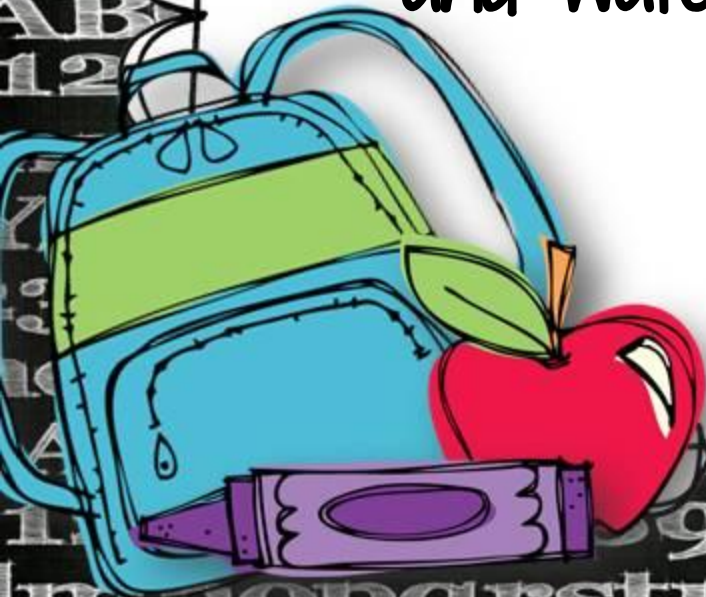
Water

- Please send in a water bottle with your child each day! They will be able to refill their water bottles during snack and lunch times.
- They may only be filled with **WATER**.



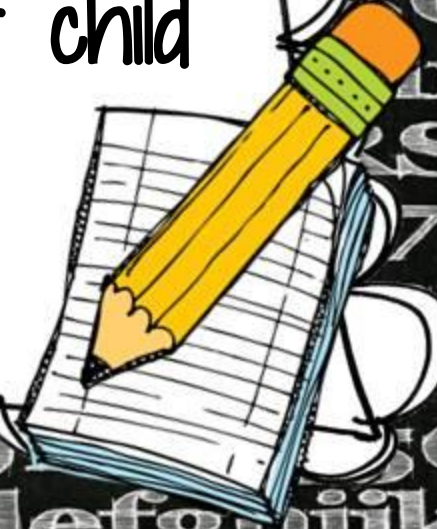
Masks

- Please send your child with two extra masks per day.
- Many masks get wet from sweat and water throughout the day.
- Please make sure to wash fabric masks.



Homework Policy

- Homework will be posted on my MPRCS page each night
- Please sign planner AFTER your child completes their homework
- Please sign homework after your child completes it AND you have checked it





Prayer Homework

- Each Monday starting in October, I will assign a student to bring in a prayer by that following FRIDAY.
- I will send you an email update on the Monday I assign if it is your child's turn to bring in a prayer.
- I will make all copies needed. All your child needs is their prayer.



Reading at Home

- Each night, I would like the students to read 10 minutes on their own, and 10 minutes reading with you!
- They will need to log the 10 minutes that they are reading on their own.

Reading at Home Cont

- On their reading log, your child is to log their books title and author, how long they read for, how many pages they read, your signature, and a brief summary.
- Summary should be **AT LEAST 2-4 sentences**

Tests and Quizzes

- Students will get study guide before each test.
- I'll give at least a 2 day notice beforehand, and they will be posted on my MPRCS page.
- Every Friday, they will have a Religion Test, ELA Reading test, and a Spelling Test.



Chromebooks

This year, the students are getting chromebooks, which they will mostly LEAVE IN THE CLASSROOM.

If you have not done so yet,
PLEASE SEND IN THE
INSURANCE FOR THEM!



Chromebooks Con't

- What they will need
 - Headphones
 - 13in or 14in Chromebook Sleeve
 - Optional: mouse
- All Chromebook supplies should be labeled with your child's name.



Communication

- You can contact me at cempfield@mpregional.org
- I will respond to emails within 24-48 hrs., not including weekends.
- If your child is out sick, please email myself and the office.

